


Product datasheet

Anti-Kallikrein 14 antibody [EPR7209] ab128957

Recombinant RabMAb

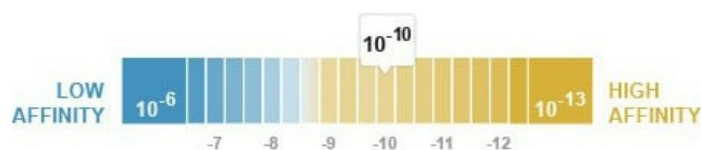
[1 References](#) [3 Images](#)

Overview

Product name	Anti-Kallikrein 14 antibody [EPR7209]
Description	Rabbit monoclonal [EPR7209] to Kallikrein 14
Host species	Rabbit
Tested applications	Suitable for: WB Unsuitable for: Flow Cyt, ICC/IF, IHC-P or IP
Species reactivity	Reacts with: Human Predicted to work with: Mouse, Rat 
Immunogen	Synthetic peptide. This information is proprietary to Abcam and/or its suppliers.
Positive control	SH-SY5Y, fetal liver, fetal kidney, HACAT and prostate cancer lysates
General notes	This product is a recombinant monoclonal antibody, which offers several advantages including: <ul style="list-style-type: none"> - High batch-to-batch consistency and reproducibility - Improved sensitivity and specificity - Long-term security of supply - Animal-free production For more information see here . Our RabMAb [®] technology is a patented hybridoma-based technology for making rabbit monoclonal antibodies. For details on our patents, please refer to RabMAb[®] patents .

Properties

Form	Liquid
Storage instructions	Shipped at 4°C. Store at -20°C. Stable for 12 months at -20°C.
Dissociation constant (K _D)	K _D = 1.51 x 10 ⁻¹⁰ M



[Learn more about K_D](#)

Storage buffer	pH: 7.20
----------------	----------

	Preservative: 0.01% Sodium azide Constituents: 0.31% Sodium citrate, 0.175% Sodium chloride, 0.0172% EDTA disodium salt, 59% PBS, 40% Glycerol (glycerin, glycerine), 0.05% BSA
Purity	Protein A purified
Clonality	Monoclonal
Clone number	EPR7209
Isotype	IgG

Applications

The Abpromise guarantee Our **Abpromise guarantee** covers the use of ab128957 in the following tested applications. The application notes include recommended starting dilutions; optimal dilutions/concentrations should be determined by the end user.

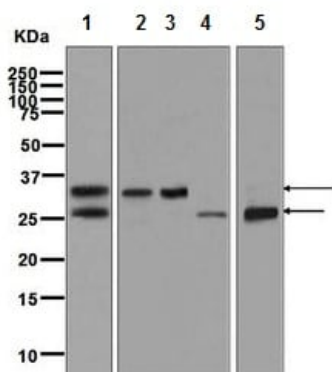
Application	Abreviews	Notes
WB		1/1000 - 1/10000. Detects a band of approximately 29, 31 kDa (predicted molecular weight: 29 kDa).

Application notes Is unsuitable for Flow Cyt, ICC/IF, IHC-P or IP.

Target

Function	Serine-type endopeptidase with a dual trypsin-like and chymotrypsin-like substrate specificity. May activate/inactivate the proteinase-activated receptors F2R, F2RL1 and F2RL3 and other kallikreins including KLK1, KLK3, KLK5 and KLK11. May function in seminal clot liquefaction through direct cleavage of the semenogelin SEMG1 and SEMG2 and activation of KLK3. May function through desmoglein DSG1 cleavage in epidermal desquamation a process by which the most superficial corneocytes are shed from the skin surface. May be involved in several aspects of tumor progression including growth, invasion and angiogenesis.
Tissue specificity	Highly expressed in CNS, bone marrow and fetal liver. Also expressed in breast, thyroid, kidney, colon, pancreas, spleen, prostate, uterus, small intestine, placenta and skeletal muscle. Among 40 tissues tested, the highest expression is detected in skin followed by breast and prostate (at protein level). Expressed in stratum corneum by sweat ducts and sweat glands and detected in sweat (at protein level).
Sequence similarities	Belongs to the peptidase S1 family. Kallikrein subfamily. Contains 1 peptidase S1 domain.
Post-translational modifications	Proteolytic cleavage of the activation peptide produces the active enzyme.
Cellular localization	Secreted > extracellular space.

Images



Western blot - Anti-Kallikrein 14 antibody [EPR7209]
(ab128957)

All lanes : Anti-Kallikrein 14 antibody [EPR7209] (ab128957) at 1/1000 dilution

Lane 1 : SH-SY5Y cell lysate

Lane 2 : Fetal liver lysate

Lane 3 : Fetal kidney lysate

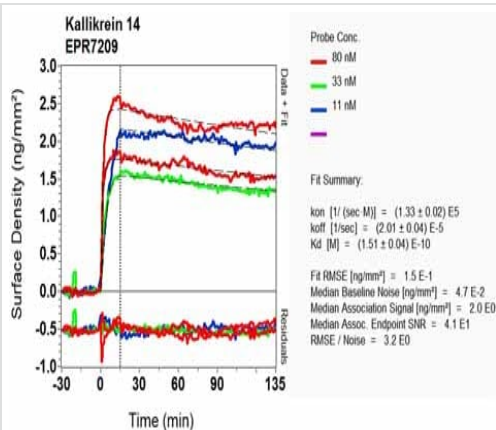
Lane 4 : HACAT cell lysate

Lane 5 : Prostate cancer lysate

Lysates/proteins at 10 µg per lane.

Predicted band size: 29 kDa

Observed band size: 29,31 kDa



OIR-D Scanning - Anti-Kallikrein 14 antibody
[EPR7209] (ab128957)

Equilibrium dissociation constant (K_D)

Learn more about K_D

[Click here to learn more about \$K_D\$](#)

Why choose a recombinant antibody?



Research with confidence
Consistent and reproducible results



Long-term and scalable supply
Recombinant technology



Success from the first experiment
Confirmed specificity



Ethical standards compliant
Animal-free production

Anti-Kallikrein 14 antibody [EPR7209] (ab128957)

Please note: All products are "FOR RESEARCH USE ONLY. NOT FOR USE IN DIAGNOSTIC PROCEDURES"

Our Abpromise to you: Quality guaranteed and expert technical support

- Replacement or refund for products not performing as stated on the datasheet
- Valid for 12 months from date of delivery
- Response to your inquiry within 24 hours
- We provide support in Chinese, English, French, German, Japanese and Spanish
- Extensive multi-media technical resources to help you
- We investigate all quality concerns to ensure our products perform to the highest standards

If the product does not perform as described on this datasheet, we will offer a refund or replacement. For full details of the Abpromise, please visit <https://www.abcam.com/abpromise> or contact our technical team.

Terms and conditions

- Guarantee only valid for products bought direct from Abcam or one of our authorized distributors