

Product datasheet

Anti-Kallikrein 2/KLK2 antibody ab169269

[2 Images](#)

Overview

Product name	Anti-Kallikrein 2/KLK2 antibody
Description	Mouse polyclonal to Kallikrein 2/KLK2
Host species	Mouse
Tested applications	Suitable for: WB, IHC-P
Species reactivity	Reacts with: Human
Immunogen	Recombinant full length protein within Human Kallikrein 2/KLK2 aa 1-250. The exact immunogen sequence used to generate this antibody is proprietary information. If additional detail on the immunogen is needed to determine the suitability of the antibody for your needs, please contact our Scientific Support team to discuss your requirements. NP_001002231.1 Database link: P20151-2 Run BLAST with Run BLAST with
Positive control	Kallikrein 2/KLK2 transfected 293T cell lysate; Human small intestine tissue.
General notes	<p>The Life Science industry has been in the grips of a reproducibility crisis for a number of years. Abcam is leading the way in addressing this with our range of recombinant monoclonal antibodies and knockout edited cell lines for gold-standard validation. Please check that this product meets your needs before purchasing.</p> <p>If you have any questions, special requirements or concerns, please send us an inquiry and/or contact our Support team ahead of purchase. Recommended alternatives for this product can be found below, along with publications, customer reviews and Q&As</p>

Properties

Form	Liquid
Storage instructions	Shipped at 4°C. Store at +4°C short term (1-2 weeks). Upon delivery aliquot. Store at -20°C long term.
Storage buffer	pH: 7.4 Constituent: 99% PBS
Purity	Protein A purified
Clonality	Polyclonal
Isotype	IgG

Applications

The Abpromise guarantee Our **Abpromise guarantee** covers the use of ab169269 in the following tested applications. The application notes include recommended starting dilutions; optimal dilutions/concentrations should be determined by the end user.

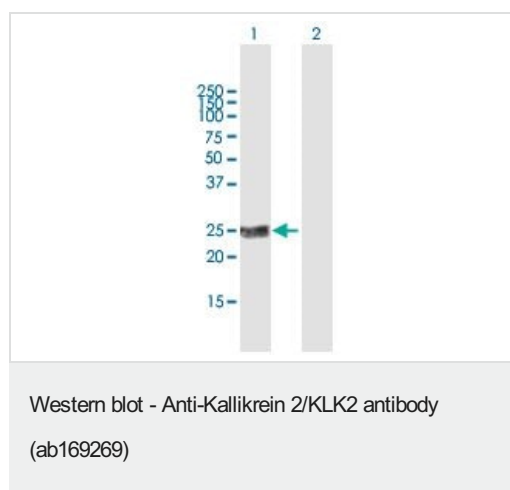
Application	Abreviews	Notes
WB		Use a concentration of 1 µg/ml. Predicted molecular weight: 25 kDa.
IHC-P		Use a concentration of 3 µg/ml.

Target

Function Glandular kallikreins cleave Met-Lys and Arg-Ser bonds in kininogen to release Lys-bradykinin.

Sequence similarities Belongs to the peptidase S1 family. Kallikrein subfamily.
Contains 1 peptidase S1 domain.

Images



All lanes : Anti-Kallikrein 2/KLK2 antibody (ab169269) at 1 µg/ml

Lane 1 : Kallikrein 2/KLK2 transfected 293T cell lysate

Lane 2 : Non-transfected 293T cell lysate

Lysates/proteins at 15 µl per lane.

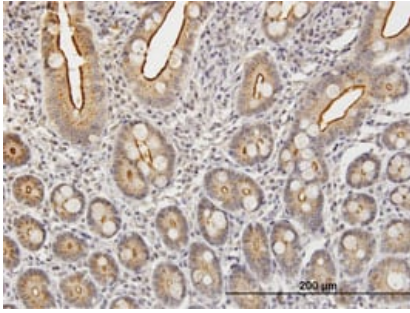
Secondary

Lane 1 : Goat Anti-Mouse IgG (H&L)-HRP at 1/2500 dilution

Lane 2 : Goat Anti-Mouse IgG (H&L)-HRP at 1/2500 dilution

Developed using the ECL technique.

Predicted band size: 25 kDa



Immunohistochemical analysis of formalin-fixed, paraffin-embedded Human small intestine tissue labeling Kallikrein 2/KLK2 with ab169269 at 3 µg/ml.

Immunohistochemistry (Formalin/PFA-fixed paraffin-embedded sections) - Anti-Kallikrein 2/KLK2 antibody (ab169269)

Please note: All products are "FOR RESEARCH USE ONLY. NOT FOR USE IN DIAGNOSTIC PROCEDURES"

Our Abpromise to you: Quality guaranteed and expert technical support

- Replacement or refund for products not performing as stated on the datasheet
- Valid for 12 months from date of delivery
- Response to your inquiry within 24 hours
- We provide support in Chinese, English, French, German, Japanese and Spanish
- Extensive multi-media technical resources to help you
- We investigate all quality concerns to ensure our products perform to the highest standards

If the product does not perform as described on this datasheet, we will offer a refund or replacement. For full details of the Abpromise, please visit <https://www.abcam.com/abpromise> or contact our technical team.

Terms and conditions

- Guarantee only valid for products bought direct from Abcam or one of our authorized distributors