



## Product datasheet

# Anti-Kallikrein 2/KLK2 antibody ab232980

8 Images

### Overview

<b>Product name</b>	Anti-Kallikrein 2/KLK2 antibody
<b>Description</b>	Rabbit polyclonal to Kallikrein 2/KLK2
<b>Host species</b>	Rabbit
<b>Tested applications</b>	<b>Suitable for:</b> IHC-P, WB
<b>Species reactivity</b>	<b>Reacts with:</b> Rat, Human
<b>Immunogen</b>	Recombinant full length protein (His-tag) corresponding to Human Kallikrein 2/KLK2 aa 1 to the C-terminus. Expressed in E. coli. N-terminal tag. Database link: <a href="#">P20151-1</a>
	<div>  <a href="#">Run BLAST with</a>  <a href="#">Run BLAST with</a> </div>
<b>Positive control</b>	WB: Recombinant human Kallikrein 2/KLK2 protein. Rat prostate gland tissue lysate. IHC-P: Human cerebrum, glioma, prostate, prostate cancer, breast cancer and colorectal cancer tissue.
<b>General notes</b>	<p>The Life Science industry has been in the grips of a reproducibility crisis for a number of years. Abcam is leading the way in addressing this with our range of recombinant monoclonal antibodies and knockout edited cell lines for gold-standard validation. Please check that this product meets your needs before purchasing.</p> <p>If you have any questions, special requirements or concerns, please send us an inquiry and/or contact our Support team ahead of purchase. Recommended alternatives for this product can be found below, along with publications, customer reviews and Q&amp;As</p>

### Properties

<b>Form</b>	Liquid
<b>Storage instructions</b>	Shipped at 4°C. Store at +4°C short term (1-2 weeks). Upon delivery aliquot. Store at -20°C long term. Avoid freeze / thaw cycle.
<b>Storage buffer</b>	pH: 7.40 Preservative: 0.011% Proclin 300 Constituents: 55.77% Glycerol (glycerin, glycerine), 44.219% PBS
<b>Purity</b>	Protein A purified
<b>Purification notes</b>	Antigen-specific affinity chromatography followed by Protein A affinity chromatography.
<b>Clonality</b>	Polyclonal
<b>Isotype</b>	IgG

## Applications

### The Abpromise guarantee

Our **Abpromise guarantee** covers the use of ab232980 in the following tested applications.

The application notes include recommended starting dilutions; optimal dilutions/concentrations should be determined by the end user.

Application	Abreviews	Notes
IHC-P		Use a concentration of 5 - 20 µg/ml.
WB		Use a concentration of 0.5 - 2 µg/ml.

## Target

### Function

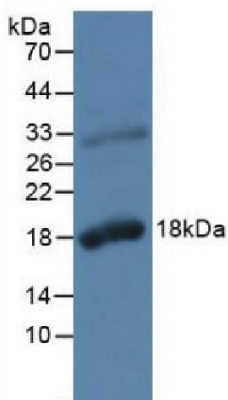
Glandular kallikreins cleave Met-Lys and Arg-Ser bonds in kininogen to release Lys-bradykinin.

### Sequence similarities

Belongs to the peptidase S1 family. Kallikrein subfamily.

Contains 1 peptidase S1 domain.

## Images

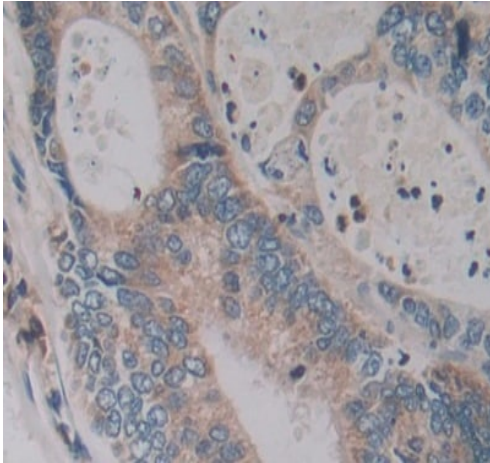


Western blot - Anti-Kallikrein 2/KLK2 antibody  
(ab232980)

Anti-Kallikrein 2/KLK2 antibody (ab232980) at 2 µg/ml + Rat prostate gland tissue lysate

### Secondary

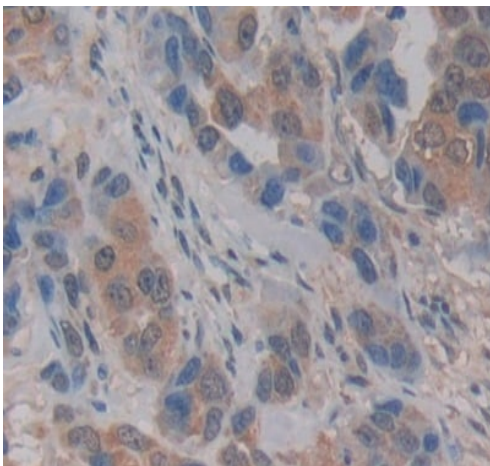
HRP-Linked Guinea pig anti-Rabbit at 1/2000 dilution



Immunohistochemistry (Formalin/PFA-fixed paraffin-embedded sections) - Anti-Kallikrein 2/CLK2 antibody (ab232980)

Formalin-fixed, paraffin-embedded human colorectal cancer tissue stained for Kallikrein 2/CLK2 with ab232980 at 10 µg/ml in immunohistochemical analysis.

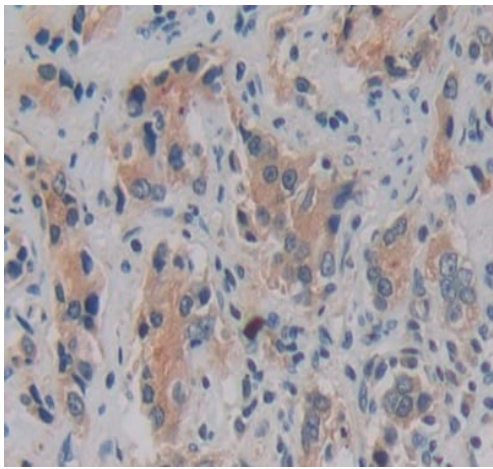
Secondary used: HRP-Linked Goat anti-Rabbit IgG polyclonal at 2 µg/ml. DAB staining.



Immunohistochemistry (Formalin/PFA-fixed paraffin-embedded sections) - Anti-Kallikrein 2/CLK2 antibody (ab232980)

Formalin-fixed, paraffin-embedded human breast cancer tissue stained for Kallikrein 2/CLK2 with ab232980 at 10 µg/ml in immunohistochemical analysis.

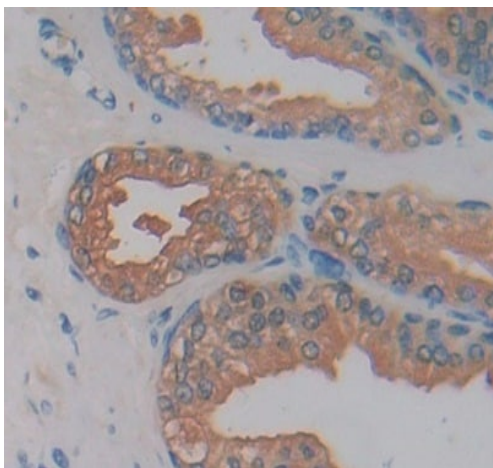
Secondary used: HRP-Linked Goat anti-Rabbit IgG polyclonal at 2 µg/ml. DAB staining.



Immunohistochemistry (Formalin/PFA-fixed paraffin-embedded sections) - Anti-Kallikrein 2/CLK2 antibody (ab232980)

Formalin-fixed, paraffin-embedded human prostate cancer tissue stained for Kallikrein 2/CLK2 with ab232980 at 10 µg/ml in immunohistochemical analysis.

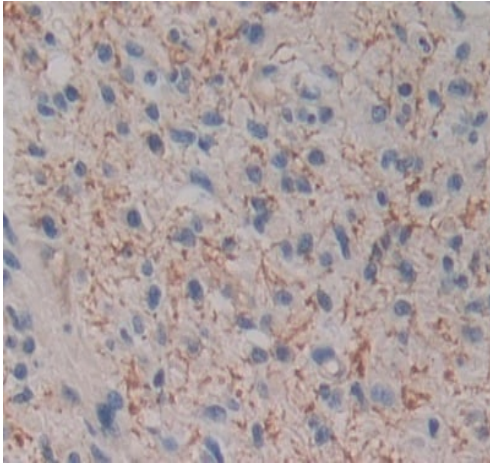
Secondary used: HRP-Linked Goat anti-Rabbit IgG polyclonal at 2 µg/ml. DAB staining.



Immunohistochemistry (Formalin/PFA-fixed paraffin-embedded sections) - Anti-Kallikrein 2/CLK2 antibody (ab232980)

Formalin-fixed, paraffin-embedded human prostate tissue stained for Kallikrein 2/CLK2 with ab232980 at 10 µg/ml in immunohistochemical analysis.

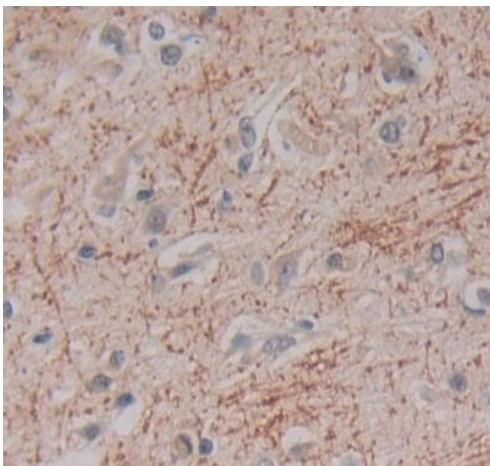
Secondary used: HRP-Linked Goat anti-Rabbit IgG polyclonal at 2 µg/ml. DAB staining.



Immunohistochemistry (Formalin/PFA-fixed paraffin-embedded sections) - Anti-Kallikrein 2/CLK2 antibody (ab232980)

Formalin-fixed, paraffin-embedded human glioma tissue stained for Kallikrein 2/CLK2 with ab232980 at 10 µg/ml in immunohistochemical analysis.

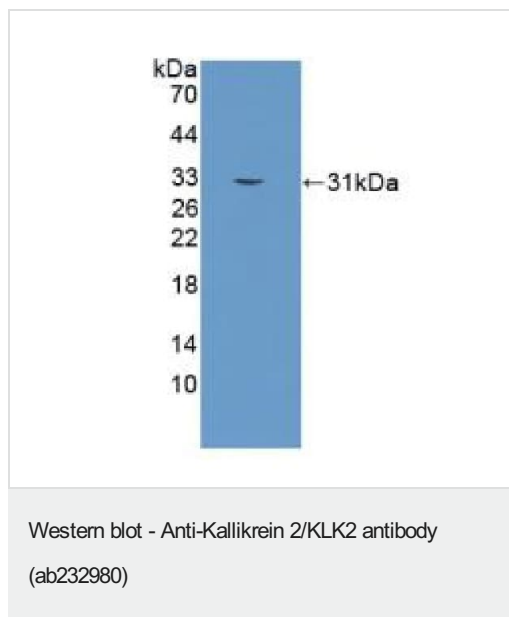
Secondary used: HRP-Linked Goat anti-Rabbit IgG polyclonal at 2 µg/ml. DAB staining.



Immunohistochemistry (Formalin/PFA-fixed paraffin-embedded sections) - Anti-Kallikrein 2/CLK2 antibody (ab232980)

Formalin-fixed, paraffin-embedded human cerebrum tissue stained for Kallikrein 2/CLK2 with ab232980 at 10 µg/ml in immunohistochemical analysis.

Secondary used: HRP-Linked Goat anti-Rabbit IgG polyclonal at 2 µg/ml. DAB staining.



Anti-Kallikrein 2/KLK2 antibody (ab232980) at 2 µg/ml +  
Recombinant human Kallikrein 2/KLK2 protein

**Please note:** All products are "FOR RESEARCH USE ONLY. NOT FOR USE IN DIAGNOSTIC PROCEDURES"

### Our Abpromise to you: Quality guaranteed and expert technical support

---

- Replacement or refund for products not performing as stated on the datasheet
- Valid for 12 months from date of delivery
- Response to your inquiry within 24 hours
- We provide support in Chinese, English, French, German, Japanese and Spanish
- Extensive multi-media technical resources to help you
- We investigate all quality concerns to ensure our products perform to the highest standards

If the product does not perform as described on this datasheet, we will offer a refund or replacement. For full details of the Abpromise, please visit <https://www.abcam.com/abpromise> or contact our technical team.

### Terms and conditions

---

- Guarantee only valid for products bought direct from Abcam or one of our authorized distributors