


Product datasheet

Anti-Kallikrein 4 antibody ab231048

[4 Images](#)

Overview

Product name	Anti-Kallikrein 4 antibody
Description	Rabbit polyclonal to Kallikrein 4
Host species	Rabbit
Tested applications	Suitable for: IHC-P, WB
Species reactivity	Reacts with: Rat Predicted to work with: Mouse 
Positive control	WB: Recombinant rat Kallikrein 4 protein; rat prostate lysate. IHC-P: Rat testis and spinal cord tissue.
General notes	<p>The Life Science industry has been in the grips of a reproducibility crisis for a number of years. Abcam is leading the way in addressing this with our range of recombinant monoclonal antibodies and knockout edited cell lines for gold-standard validation. Please check that this product meets your needs before purchasing.</p> <p>If you have any questions, special requirements or concerns, please send us an inquiry and/or contact our Support team ahead of purchase. Recommended alternatives for this product can be found below, along with publications, customer reviews and Q&As</p>

Properties

Form	Liquid
Storage instructions	Shipped at 4°C. Store at +4°C short term (1-2 weeks). Upon delivery aliquot. Store at -20°C long term. Avoid freeze / thaw cycle.
Storage buffer	pH: 7.40 Preservative: 0.02% Sodium azide Constituents: 44.12% PBS, 55.77% Glycerol (glycerin, glycerine)
Purity	Immunogen affinity purified
Purification notes	Antigen-specific affinity chromatography followed by Protein A affinity chromatography
Clonality	Polyclonal
Isotype	IgG

Applications

The Abpromise guarantee

Our **Abpromise guarantee** covers the use of ab231048 in the following tested applications.

The application notes include recommended starting dilutions; optimal dilutions/concentrations should be determined by the end user.

Application	Abreviews	Notes
IHC-P		Use a concentration of 5 - 20 µg/ml.
WB		Use a concentration of 0.2 - 2 µg/ml. Predicted molecular weight: 28 kDa.

Target

Tissue specificity

Expressed in prostate.

Involvement in disease

Defects in KLK4 are the cause of amelogenesis imperfecta hypomaturational type 2A1 (AI2A1) [MIM:204700]. AI2A1 is an autosomal recessive defect of enamel formation. The disorder involves both primary and secondary dentitions. The teeth have a shiny agar jelly appearance and the enamel is softer than normal. Brown pigment is present in middle layers of enamel.

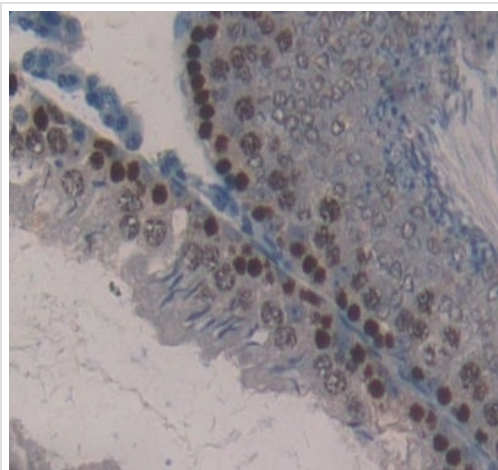
Sequence similarities

Belongs to the peptidase S1 family, Kallikrein subfamily.
Contains 1 peptidase S1 domain.

Cellular localization

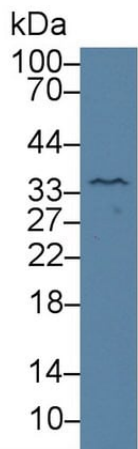
Secreted.

Images



Formalin-fixed, paraffin-embedded rat testis tissue stained for Kallikrein 4 with ab231048 at 10 µg/ml in immunohistochemical analysis. DAB staining.

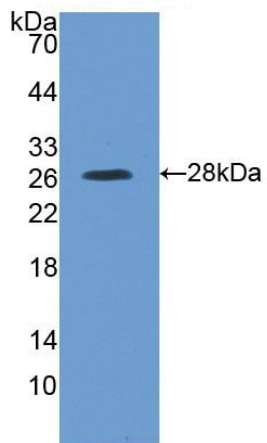
Immunohistochemistry (Formalin/PFA-fixed paraffin-embedded sections) - Anti-Kallikrein 4 antibody (ab231048)



Western blot - Anti-Kallikrein 4 antibody (ab231048)

Anti-Kallikrein 4 antibody (ab231048) at 2 μ g/ml + Rat prostate lysate

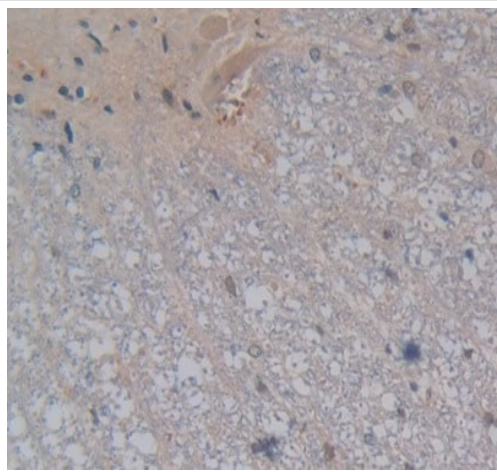
Predicted band size: 28 kDa



Western blot - Anti-Kallikrein 4 antibody (ab231048)

Anti-Kallikrein 4 antibody (ab231048) at 2 μ g/ml + Recombinant rat Kallikrein 4 protein

Predicted band size: 28 kDa



Formalin-fixed, paraffin-embedded rat spinal cord tissue stained for Kallikrein 4 with ab231048 at 10 µg/ml in immunohistochemical analysis. DAB staining.

Immunohistochemistry (Formalin/PFA-fixed paraffin-embedded sections) - Anti-Kallikrein 4 antibody (ab231048)

Please note: All products are "FOR RESEARCH USE ONLY. NOT FOR USE IN DIAGNOSTIC PROCEDURES"

Our Abpromise to you: Quality guaranteed and expert technical support

- Replacement or refund for products not performing as stated on the datasheet
- Valid for 12 months from date of delivery
- Response to your inquiry within 24 hours
- We provide support in Chinese, English, French, German, Japanese and Spanish
- Extensive multi-media technical resources to help you
- We investigate all quality concerns to ensure our products perform to the highest standards

If the product does not perform as described on this datasheet, we will offer a refund or replacement. For full details of the Abpromise, please visit <https://www.abcam.com/abpromise> or contact our technical team.

Terms and conditions

- Guarantee only valid for products bought direct from Abcam or one of our authorized distributors