


Product datasheet

Anti-kan antibody [4B4D1] ab60018

[1 Abreviews](#) [11 References](#) [1 Image](#)

Overview

Product name	Anti-kan antibody [4B4D1]
Description	Mouse monoclonal [4B4D1] to kan
Host species	Mouse
Tested applications	Suitable for: ELISA, WB
Species reactivity	Reacts with: Recombinant fragment Predicted to work with: Escherichia coli 
Immunogen	Recombinant full length protein corresponding to kan.
General notes	<p>The Life Science industry has been in the grips of a reproducibility crisis for a number of years. Abcam is leading the way in addressing this with our range of recombinant monoclonal antibodies and knockout edited cell lines for gold-standard validation. Please check that this product meets your needs before purchasing.</p> <p>If you have any questions, special requirements or concerns, please send us an inquiry and/or contact our Support team ahead of purchase. Recommended alternatives for this product can be found below, along with publications, customer reviews and Q&As</p>

Properties

Form	Liquid
Storage instructions	Shipped at 4°C. Upon delivery aliquot and store at -20°C or -80°C. Avoid repeated freeze / thaw cycles.
Storage buffer	pH: 7.2
Purity	Protein A purified
Clonality	Monoclonal
Clone number	4B4D1
Isotype	IgG2a

Applications

The Abpromise guarantee Our **Abpromise guarantee** covers the use of ab60018 in the following tested applications.

The application notes include recommended starting dilutions; optimal dilutions/concentrations should be determined by the end user.

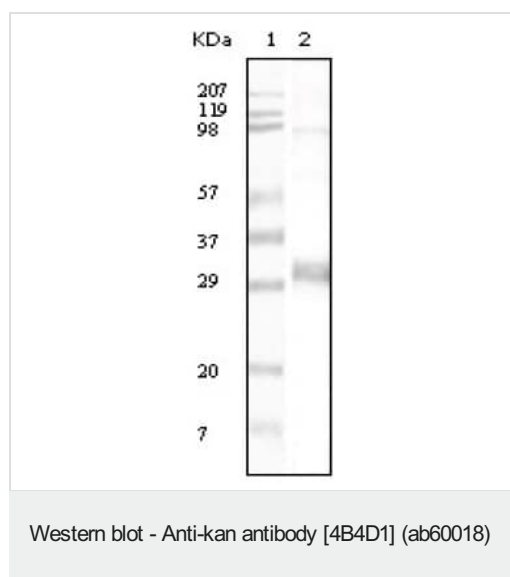
Application	Abreviews	Notes
ELISA		Use at an assay dependent concentration.
WB		1/500 - 1/2000. Detects a band of approximately 30 kDa (predicted molecular weight: 29 kDa).

Target

Relevance

Neomycin Phosphotransferase 2 (kan) confers resistance to kanamycin and neomycin in bacteria and G418 (Geneticin®, G418 Sulfate) in mammalian cells. These antibiotics bind to ribosomal components and inhibit protein synthesis. NPT II inhibits these antibiotics through phosphorylation, which is thought to interfere with their active transport into the cell. Immunoblot analysis of transfected cell lysates with anti NPT II can be used to gauge relative transfection efficiencies in experiments where multiple transfections are performed in parallel with different plasmids.

Images



Anti-kan antibody [4B4D1] (ab60018) at 1/500 dilution +
Recombinant kan expressed in E. coli.

Predicted band size: 29 kDa

Observed band size: 30 kDa

Please note: All products are "FOR RESEARCH USE ONLY. NOT FOR USE IN DIAGNOSTIC PROCEDURES"

Our Abpromise to you: Quality guaranteed and expert technical support

- Replacement or refund for products not performing as stated on the datasheet
- Valid for 12 months from date of delivery
- Response to your inquiry within 24 hours
- We provide support in Chinese, English, French, German, Japanese and Spanish
- Extensive multi-media technical resources to help you
- We investigate all quality concerns to ensure our products perform to the highest standards

If the product does not perform as described on this datasheet, we will offer a refund or replacement. For full details of the Abpromise, please visit <https://www.abcam.com/abpromise> or contact our technical team.

Terms and conditions

- Guarantee only valid for products bought direct from Abcam or one of our authorized distributors