


## Product datasheet

### Anti-KBTBD8 antibody [EPR10698(B)] ab154189

Recombinant RabMAb

3 Images

#### Overview

|                     |   |
|---------------------|---|
| Product name        | Anti-KBTBD8 antibody [EPR10698(B)]  |
| Description         | Rabbit monoclonal [EPR10698(B)] to KBTBD8   |
| Host species        | Rabbit  |
| Tested applications | <b>Suitable for:</b> Flow Cyt (Intra), WB<br><b>Unsuitable for:</b> ICC/IF, IHC-P or IP   |
| Species reactivity  | <b>Reacts with:</b> Human<br><b>Predicted to work with:</b> Mouse, Rat   |
| Immunogen           | Synthetic peptide. This information is proprietary to Abcam and/or its suppliers.   |
| Positive control    | Human fetal liver lysate; HT-1080 cells and cell lysate, Human tonsil lysate; A431 cell lysate  |
| General notes       | <p>This product is a recombinant monoclonal antibody, which offers several advantages including:</p> <ul style="list-style-type: none"> <li>- High batch-to-batch consistency and reproducibility</li> <li>- Improved sensitivity and specificity</li> <li>- Long-term security of supply</li> <li>- Animal-free production</li> </ul> <p>For more information <a href="#">see here</a>.</p> <p>Our RabMAb<sup>®</sup> technology is a patented hybridoma-based technology for making rabbit monoclonal antibodies. For details on our patents, please refer to <a href="#">RabMAb<sup>®</sup> patents</a>.</p> |

#### Properties

|                      |  |
|----------------------|--|
| Form                 | Liquid   |
| Storage instructions | Shipped at 4°C. Store at +4°C short term (1-2 weeks). Upon delivery aliquot. Store at -20°C long term. Avoid freeze / thaw cycle.                  |
| Storage buffer       | pH: 7.2<br>Preservative: 0.01% Sodium azide<br>Constituents: 9% PBS, 40% Glycerol (glycerin, glycerine), 0.05% BSA, 50% Tissue culture supernatant |
| Purity               | Tissue culture supernatant   |
| Clonality            | Monoclonal   |

**Clone number** EPR10698(B)

**Isotype** IgG

## Applications

**The Abpromise guarantee** Our **Abpromise guarantee** covers the use of ab154189 in the following tested applications. The application notes include recommended starting dilutions; optimal dilutions/concentrations should be determined by the end user.

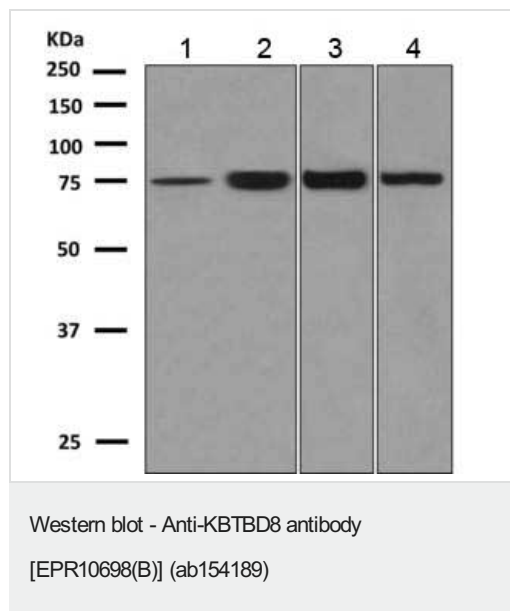
| Application      | Abreviews | Notes   |
|------------------|-----------|---|
| Flow Cyt (Intra) |           | 1/10 - 1/100.<br><b>ab172730</b> - Rabbit monoclonal IgG, is suitable for use as an isotype control with this antibody. |
| WB               |           | 1/1000 - 1/10000. Predicted molecular weight: 69 kDa.   |

**Application notes** Is unsuitable for ICC/IF, IHC-P or IP.

## Target

**Sequence similarities** Contains 1 BACK (BTB/Kelch associated) domain.  
Contains 1 BTB (POZ) domain.  
Contains 5 Kelch repeats.

## Images



**All lanes** : Anti-KBTBD8 antibody [EPR10698(B)] (ab154189) at 1/1000 dilution

**Lane 1** : fetal liver lysate

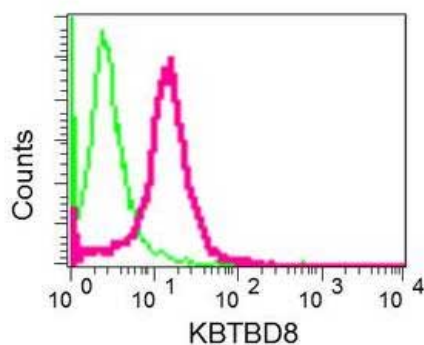
**Lane 2** : HT-1080 cell lysate

**Lane 3** : Human tonsil lysate

**Lane 4** : A431 cell lysate

Lysates/proteins at 10 µg per lane.

**Predicted band size:** 69 kDa



Intracellular flow cytometric analysis of permeabilized HT-1080 cells labeling KBTBD8 with ab154189 at 1/10 dilution (red) compared to a rabbit IgG negative control antibody (green).

Flow Cytometry (Intracellular) - Anti-KBTBD8 antibody [EPR10698(B)] (ab154189)

#### Why choose a recombinant antibody?



**Research with confidence**  
Consistent and reproducible results



**Long-term and scalable supply**  
Recombinant technology



**Success from the first experiment**  
Confirmed specificity



**Ethical standards compliant**  
Animal-free production

Anti-KBTBD8 antibody [EPR10698(B)] (ab154189)

**Please note:** All products are "FOR RESEARCH USE ONLY. NOT FOR USE IN DIAGNOSTIC PROCEDURES"

#### Our Abpromise to you: Quality guaranteed and expert technical support

- Replacement or refund for products not performing as stated on the datasheet
- Valid for 12 months from date of delivery
- Response to your inquiry within 24 hours
- We provide support in Chinese, English, French, German, Japanese and Spanish
- Extensive multi-media technical resources to help you
- We investigate all quality concerns to ensure our products perform to the highest standards

If the product does not perform as described on this datasheet, we will offer a refund or replacement. For full details of the Abpromise, please visit <https://www.abcam.com/abpromise> or contact our technical team.

## Terms and conditions

---

- Guarantee only valid for products bought direct from Abcam or one of our authorized distributors