

## Product datasheet

# Anti-KChIP2 antibody ab88542

[3 Images](#)

### Overview

---

<b>Product name</b>	Anti-KChIP2 antibody
<b>Description</b>	Mouse polyclonal to KChIP2
<b>Host species</b>	Mouse
<b>Tested applications</b>	<b>Suitable for:</b> WB, ICC/IF
<b>Species reactivity</b>	<b>Reacts with:</b> Rat, Human
<b>Immunogen</b>	Recombinant full length protein within Human KChIP2. The exact immunogen sequence used to generate this antibody is proprietary information. If additional detail on the immunogen is needed to determine the suitability of the antibody for your needs, please <b><a href="#">contact</a></b> our Scientific Support team to discuss your requirements.
<b>Positive control</b>	Rat brain lysate with KChIP2 expression, KChIP2 transfected 293T cell lysate and HeLa cell.
<b>General notes</b>	<p>The Life Science industry has been in the grips of a reproducibility crisis for a number of years. Abcam is leading the way in addressing this with our range of recombinant monoclonal antibodies and knockout edited cell lines for gold-standard validation. Please check that this product meets your needs before purchasing.</p> <p>If you have any questions, special requirements or concerns, please send us an inquiry and/or contact our Support team ahead of purchase. Recommended alternatives for this product can be found below, along with publications, customer reviews and Q&amp;As</p>

### Properties

---

<b>Form</b>	Liquid
<b>Storage instructions</b>	Shipped at 4°C. Upon delivery aliquot and store at -20°C or -80°C. Avoid repeated freeze / thaw cycles.
<b>Storage buffer</b>	pH: 7.40 Constituent: 100% PBS
<b>Purity</b>	Protein A purified
<b>Clonality</b>	Polyclonal
<b>Isotype</b>	IgG

### Applications

---

## The Abpromise guarantee

Our **Abpromise guarantee** covers the use of ab88542 in the following tested applications.

The application notes include recommended starting dilutions; optimal dilutions/concentrations should be determined by the end user.

Application	Abreviews	Notes
WB		Use a concentration of 1 µg/ml. Predicted molecular weight: 31 kDa.
ICC/IF		Use a concentration of 10 µg/ml.

## Target

### Function

Regulatory subunit of Kv4/D (Shal)-type voltage-gated rapidly inactivating A-type potassium channels. Modulates channel density, inactivation kinetics and rate of recovery from inactivation in a calcium-dependent and isoform-specific manner. In vitro, modulates KCND2/Kv4.2 and KCND3/Kv4.3 currents. Involved in KCND2 and KCND3 trafficking to the cell surface. May be required for the expression of I(To) currents in the heart.

### Tissue specificity

Expressed in brain. Colocalizes with KCND2 in excitatory neurons including cortical and hippocampal CA1 pyramidal cells. Isoform 3 is expressed in heart and in umbilical vein endothelial cells. Not expressed in fetal heart.

### Sequence similarities

Belongs to the recoverin family.  
Contains 4 EF-hand domains.

### Post-translational modifications

Palmitoylated. Palmitoylation enhances association with the plasma membrane.

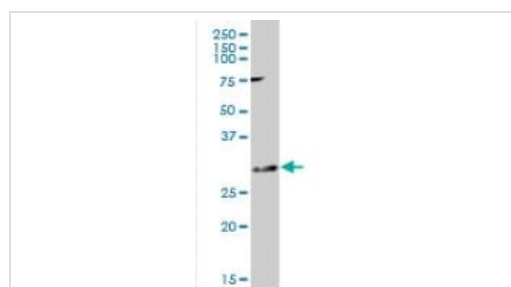
### Cellular localization

Cell membrane and Cell membrane. Detected on lipid rafts (By similarity).

### Form

There are 9 isoforms produced by alternative splicing.

## Images

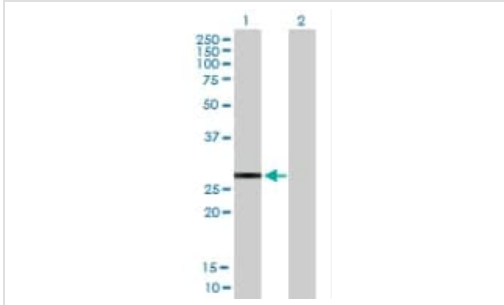


Anti-KChIP2 antibody (ab88542) at 1 µg/ml + Rat brain lysate with KChIP2 expression at 50 µg

**Predicted band size:** 31 kDa

**Observed band size:** 31 kDa

Western blot - Anti-KChIP2 antibody (ab88542)



Western blot - Anti-KChIP2 antibody (ab88542)

**All lanes :** Anti-KChIP2 antibody (ab88542) at 1 µg/ml

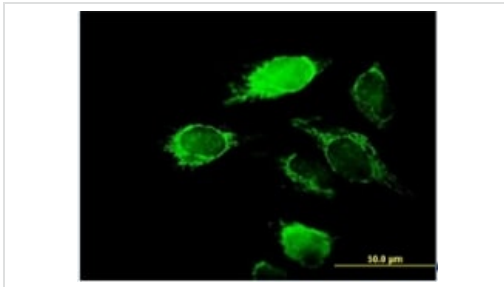
**Lane 1 :** KChIP2 transfected 293T cell lysate

**Lane 2 :** Non-transfected 293T cell lysate

Lysates/proteins at 50 µg per lane.

**Predicted band size:** 31 kDa

**Observed band size:** 31 kDa



Immunocytochemistry/ Immunofluorescence - Anti-KChIP2 antibody (ab88542)

Immunofluorescence of ab88542 on HeLa cell with antibody concentration 10 µg/ml

**Please note:** All products are "FOR RESEARCH USE ONLY. NOT FOR USE IN DIAGNOSTIC PROCEDURES"

### Our Abpromise to you: Quality guaranteed and expert technical support

- Replacement or refund for products not performing as stated on the datasheet
- Valid for 12 months from date of delivery
- Response to your inquiry within 24 hours
- We provide support in Chinese, English, French, German, Japanese and Spanish
- Extensive multi-media technical resources to help you
- We investigate all quality concerns to ensure our products perform to the highest standards

If the product does not perform as described on this datasheet, we will offer a refund or replacement. For full details of the Abpromise, please visit <https://www.abcam.com/abpromise> or contact our technical team.

### Terms and conditions

- Guarantee only valid for products bought direct from Abcam or one of our authorized distributors