

## Product datasheet

### Anti-KCTD21 antibody [EPR12873(2)] ab192259

Recombinant RabMAb

[2 References](#) [5 Images](#)

#### Overview

|                            |   |
|----------------------------|---|
| <b>Product name</b>        | Anti-KCTD21 antibody [EPR12873(2)]  |
| <b>Description</b>         | Rabbit monoclonal [EPR12873(2)] to KCTD21   |
| <b>Host species</b>        | Rabbit  |
| <b>Tested applications</b> | <b>Suitable for:</b> Flow Cyt (Intra), WB   |
| <b>Species reactivity</b>  | <b>Reacts with:</b> Mouse, Rat, Human   |
| <b>Immunogen</b>           | Recombinant fragment. This information is proprietary to Abcam and/or its suppliers.  |
| <b>Positive control</b>    | Human fetal brain lysate. Mouse and rat brain lysate. Caco-2, C6, RAW264.7, PC-12 and NIH/3T3 cell lysate. Caco-2 cells.  |
| <b>General notes</b>       | <p>This product is a recombinant monoclonal antibody, which offers several advantages including:</p> <ul style="list-style-type: none"> <li>- High batch-to-batch consistency and reproducibility</li> <li>- Improved sensitivity and specificity</li> <li>- Long-term security of supply</li> <li>- Animal-free production</li> </ul> <p>For more information <a href="#">see here</a>.</p> <p>Our RabMAb<sup>®</sup> technology is a patented hybridoma-based technology for making rabbit monoclonal antibodies. For details on our patents, please refer to <a href="#">RabMAb<sup>®</sup> patents</a>.</p> |

#### Properties

|                             |   |
|-----------------------------|---|
| <b>Form</b>                 | Liquid  |
| <b>Storage instructions</b> | Shipped at 4°C. Store at +4°C short term (1-2 weeks). Upon delivery aliquot. Store at -20°C long term. Avoid freeze / thaw cycle. |
| <b>Storage buffer</b>       | <p>pH: 7.2</p> <p>Preservative: 0.01% Sodium azide</p> <p>Constituents: 40% Glycerol (glycerin, glycerine), PBS, 0.05% BSA</p>    |
| <b>Purity</b>               | Protein A purified  |
| <b>Clonality</b>            | Monoclonal  |
| <b>Clone number</b>         | EPR12873(2)   |
| <b>Isotype</b>              | IgG   |

## Applications

### The Abpromise guarantee

Our **Abpromise guarantee** covers the use of ab192259 in the following tested applications.

The application notes include recommended starting dilutions; optimal dilutions/concentrations should be determined by the end user.

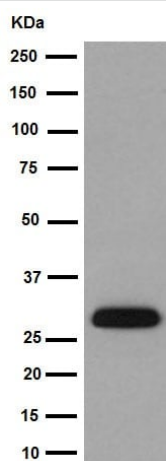
| Application      | Abreviews | Notes  |
|------------------|-----------|--|
| Flow Cyt (Intra) |           | 1/220.<br><b>ab172730</b> - Rabbit monoclonal IgG, is suitable for use as an isotype control with this antibody. |
| WB               |           | 1/1000. Predicted molecular weight: 30 kDa.  |

## Target

### Relevance

KCTD21 contains 1 BTB (POZ) domain. The exact function of KCTD21 remains unknown.

## Images



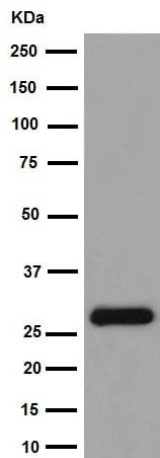
Western blot - Anti-KCTD21 antibody [EPR12873(2)]  
(ab192259)

Anti-KCTD21 antibody [EPR12873(2)] (ab192259) at 1/1000 dilution + human fetal brain lysate at 10 µg

### Secondary

Anti-Rabbit IgG (HRP), specific to the non-reduced form of IgG at 1/1000 dilution

**Predicted band size:** 30 kDa



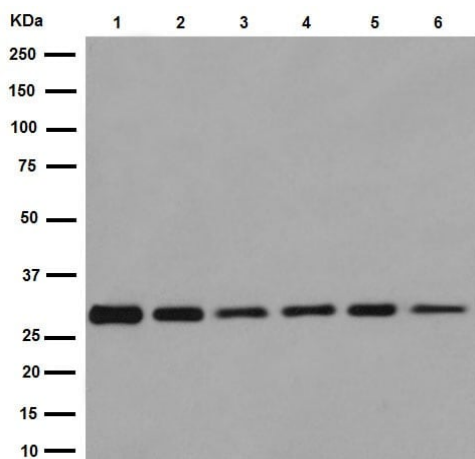
Western blot - Anti-KCTD21 antibody [EPR12873(2)]  
(ab192259)

Anti-KCTD21 antibody [EPR12873(2)] (ab192259) at 1/1000  
dilution + Caco-2 cell lysate at 10 µg

### Secondary

Goat Anti-Rabbit IgG, (H+L), Peroxidase conjugated at 1/1000  
dilution

**Predicted band size:** 30 kDa



Western blot - Anti-KCTD21 antibody [EPR12873(2)]  
(ab192259)

**All lanes :** Anti-KCTD21 antibody [EPR12873(2)] (ab192259) at  
1/1000 dilution

**Lane 1 :** Mouse brain lysate

**Lane 2 :** Rat brain lysate

**Lane 3 :** C6 cell lysate

**Lane 4 :** RAW264.7 cell lysate

**Lane 5 :** PC-12 cell lysate

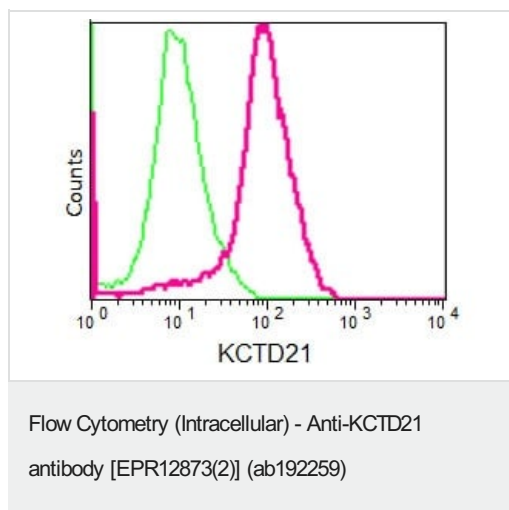
**Lane 6 :** NIH/3T3 cell lysate

Lysates/proteins at 10 µg per lane.

### Secondary





**All lanes :** Goat Anti-Rabbit IgG, (H+L), Peroxidase conjugated at  
1/1000 dilution

**Predicted band size:** 30 kDa



Intracellular Flow Cytometry analysis of Caco-2 (Human colorectal adenocarcinoma cell line) cells labeling KCTD21 using ab192259 at a 1/220 dilution (pink). Goat anti-rabbit IgG (FITC) used as the secondary at a 1/150 dilution. Isotype control Rabbit monoclonal IgG (green). Cells were fixed in 2% paraformaldehyde.

Why choose a recombinant antibody?

|  |  |
|--|--|
|  <p><b>Research with confidence</b><br/>Consistent and reproducible results</p> |  <p><b>Long-term and scalable supply</b><br/>Recombinant technology</p> |
|  <p><b>Success from the first experiment</b><br/>Confirmed specificity</p>     |  <p><b>Ethical standards compliant</b><br/>Animal-free production</p>  |

Anti-KCTD21 antibody [EPR12873(2)] (ab192259)

**Please note:** All products are "FOR RESEARCH USE ONLY. NOT FOR USE IN DIAGNOSTIC PROCEDURES"

### Our Abpromise to you: Quality guaranteed and expert technical support

- Replacement or refund for products not performing as stated on the datasheet
- Valid for 12 months from date of delivery
- Response to your inquiry within 24 hours
- We provide support in Chinese, English, French, German, Japanese and Spanish
- Extensive multi-media technical resources to help you
- We investigate all quality concerns to ensure our products perform to the highest standards

If the product does not perform as described on this datasheet, we will offer a refund or replacement. For full details of the Abpromise, please visit <https://www.abcam.com/abpromise> or contact our technical team.

### Terms and conditions

- Guarantee only valid for products bought direct from Abcam or one of our authorized distributors