

Product datasheet

Anti-KDEL Receptor antibody [KR-10] ab69659

★★★★☆ [4 Abreviews](#) [11 References](#) [1 Image](#)

Overview

Product name	Anti-KDEL Receptor antibody [KR-10]
Description	Mouse monoclonal [KR-10] to KDEL Receptor
Host species	Mouse
Tested applications	Suitable for: WB
Species reactivity	Reacts with: Rat
Immunogen	Synthetic peptide corresponding to Cow KDEL Receptor aa 192-212 conjugated to keyhole limpet haemocyanin. 21 residue synthetic peptide. Sequence: CDFFYLITKVLKGKKLSLPA

Database link: [Q99JH8](#)

 [Run BLAST with](#)

 [Run BLAST with](#)

General notes

The Life Science industry has been in the grips of a reproducibility crisis for a number of years. Abcam is leading the way in addressing this with our range of recombinant monoclonal antibodies and knockout edited cell lines for gold-standard validation. Please check that this product meets your needs before purchasing.

If you have any questions, special requirements or concerns, please send us an inquiry and/or contact our Support team ahead of purchase. Recommended alternatives for this product can be found below, along with publications, customer reviews and Q&As

Properties

Form	Liquid
Storage instructions	Shipped at 4°C. Upon delivery aliquot and store at -20°C or -80°C. Avoid repeated freeze / thaw cycles.
Storage buffer	Preservative: 0.09% Sodium azide Constituents: 50% Glycerol (glycerin, glycerine), PBS
Purity	Protein G purified
Clonality	Monoclonal
Clone number	KR-10
Isotype	IgG1

Applications

The Abpromise guarantee

Our **Abpromise guarantee** covers the use of ab69659 in the following tested applications.

The application notes include recommended starting dilutions; optimal dilutions/concentrations should be determined by the end user.

Application	Abreviews	Notes
WB	★★★★☆ (2)	1/1000. Predicted molecular weight: 24 kDa.

Target

Function

Required for the retention of luminal endoplasmic reticulum resident proteins via vesicular recycling. This receptor recognizes the C-terminal K-D-E-L motif. COPI-coated transport intermediates, either in the form of round vesicles or as tubular processes, mediate retrograde traffic of the KDEL receptor-ligand complexes. Also required for normal vesicular traffic through the Golgi.

Sequence similarities

Belongs to the ERD2 family.

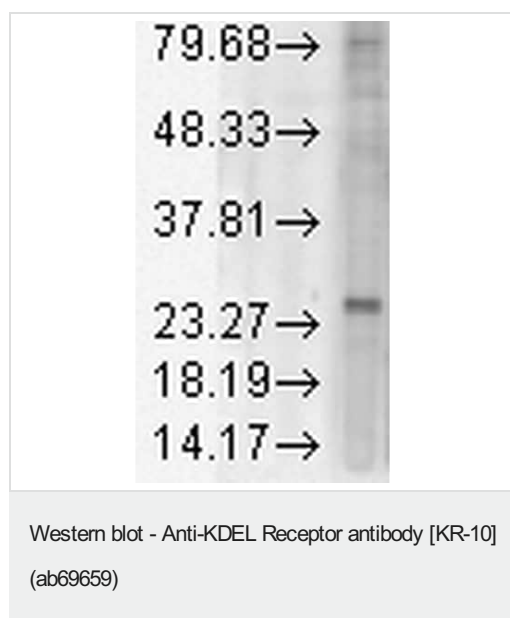
Post-translational modifications

Phosphorylation by PKA at Ser-209 is required for endoplasmic reticulum retention function.

Cellular localization

Cytoplasmic vesicle, COPI-coated vesicle membrane. Endoplasmic reticulum membrane. Endoplasmic reticulum-Golgi intermediate compartment membrane.

Images



Anti-KDEL Receptor antibody [KR-10] (ab69659) at 1/1000 dilution
+ Rat tissue lysate at 15 µg

Secondary

Sheep Anti-Mouse IgG: HRP for 1 hour at RT.

Predicted band size: 24 kDa

Please note: All products are "FOR RESEARCH USE ONLY. NOT FOR USE IN DIAGNOSTIC PROCEDURES"

Our Abpromise to you: Quality guaranteed and expert technical support

- Replacement or refund for products not performing as stated on the datasheet
- Valid for 12 months from date of delivery
- Response to your inquiry within 24 hours

- We provide support in Chinese, English, French, German, Japanese and Spanish
- Extensive multi-media technical resources to help you
- We investigate all quality concerns to ensure our products perform to the highest standards

If the product does not perform as described on this datasheet, we will offer a refund or replacement. For full details of the Abpromise, please visit <https://www.abcam.com/abpromise> or contact our technical team.

Terms and conditions

- Guarantee only valid for products bought direct from Abcam or one of our authorized distributors