

Anti-KDM1/LSD1 antibody ab62582

★★★★★ [1 Abreviews](#) [4 References](#) [4 Images](#)

Overview

Product name	Anti-KDM1/LSD1 antibody
Description	Rabbit polyclonal to KDM1/LSD1
Host species	Rabbit
Tested applications	Suitable for: ICC/IF, IHC-P, WB
Species reactivity	Reacts with: Mouse, Human
Immunogen	Synthetic 16 amino acid peptide from near the centre of human KDM1/ LSD1.
Positive control	WB: MCF-7, Jurkat, and P815 cell lysates. IHC-P: Human small intestine tissue.
General notes	<p>The Life Science industry has been in the grips of a reproducibility crisis for a number of years. Abcam is leading the way in addressing this with our range of recombinant monoclonal antibodies and knockout edited cell lines for gold-standard validation. Please check that this product meets your needs before purchasing.</p> <p>If you have any questions, special requirements or concerns, please send us an inquiry and/or contact our Support team ahead of purchase. Recommended alternatives for this product can be found below, along with publications, customer reviews and Q&As</p>

Properties

Form	Liquid
Storage instructions	Shipped at 4°C. Store at +4°C short term (1-2 weeks). Store at -20°C. Avoid freeze / thaw cycle.
Storage buffer	pH: 7.2 Preservative: 0.02% Sodium azide Constituent: PBS
Purity	Immunogen affinity purified
Clonality	Polyclonal
Isotype	IgG

Applications

The Abpromise guarantee Our **Abpromise guarantee** covers the use of ab62582 in the following tested applications. The application notes include recommended starting dilutions; optimal dilutions/concentrations should be determined by the end user.

Application	Abreviews	Notes
ICC/IF		Use a concentration of 20 µg/ml.
IHC-P		Use a concentration of 2 µg/ml.
WB	★★★★★ (1)	Use a concentration of 0.2 - 2 µg/ml. Detects a band of approximately 105 kDa (predicted molecular weight: 93 kDa).

Target

Function

Histone demethylase that demethylates both 'Lys-4' (H3K4me) and 'Lys-9' (H3K9me) of histone H3, thereby acting as a coactivator or a corepressor, depending on the context. Acts by oxidizing the substrate by FAD to generate the corresponding imine that is subsequently hydrolyzed. Acts as a corepressor by mediating demethylation of H3K4me, a specific tag for epigenetic transcriptional activation. Demethylates both mono- (H3K4me1) and di-methylated (H3K4me2) H3K4me. May play a role in the repression of neuronal genes. Alone, it is unable to demethylate H3K4me on nucleosomes and requires the presence of RCOR1/CoREST to achieve such activity. Also acts as a coactivator of androgen receptor (ANDR)-dependent transcription, by being recruited to ANDR target genes and mediating demethylation of H3K9me, a specific tag for epigenetic transcriptional repression. The presence of PRKCB in ANDR-containing complexes, which mediates phosphorylation of 'Thr-6' of histone H3 (H3T6ph), a specific tag that prevents demethylation H3K4me, prevents H3K4me demethylase activity of KDM1A. Demethylates di-methylated 'Lys-370' of p53/TP53 which prevents interaction of p53/TP53 with TP53BP1 and represses p53/TP53-mediated transcriptional activation. Demethylates and stabilizes the DNA methylase DNMT1. Required for gastrulation during embryogenesis.

Tissue specificity

Ubiquitously expressed.

Sequence similarities

Belongs to the flavin monoamine oxidase family.
Contains 1 SWIRM domain.

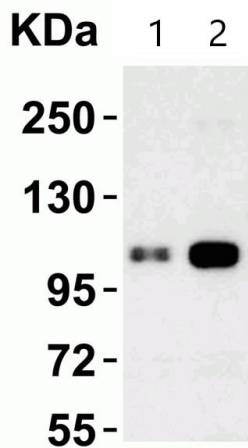
Domain

The SWIRM domain may act as an anchor site for a histone tail.

Cellular localization

Nucleus.

Images



Western blot - Anti-KDM1/LSD1 antibody (ab62582)

All lanes : Anti-KDM1/LSD1 antibody (ab62582) at 1 µg/ml

Lane 1 : MCF7 (human breast adenocarcinoma cell line) cell lysate

Lane 2 : Jurkat (human T cell leukemia cell line from peripheral blood) cell lysate

Lysates/proteins at 15 µg per lane.

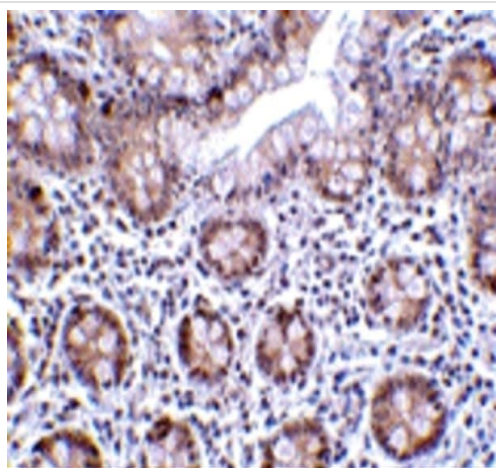
Secondary

All lanes : Goat anti-rabbit IgG (HRP) at 1/10000 dilution

Predicted band size: 93 kDa

Observed band size: 110 kDa

Diluting buffer and concentration: 5% NFDm/TBST.

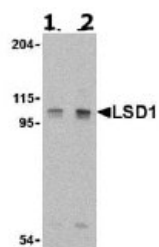


Immunohistochemistry (Formalin/PFA-fixed paraffin-embedded sections) - Anti-KDM1/LSD1 antibody (ab62582)

Immunohistochemical analysis of paraffin-embedded human small intestine tissue using ab62582 at 2 µg/ml. Tissue was fixed with formaldehyde and blocked with 10% serum for 1 h at RT; antigen retrieval was by heat mediation with a citrate buffer (pH6). Samples were incubated with primary antibody overnight at 4°C. A goat anti-rabbit IgG H&L (HRP) at 1/250 was used as secondary. Counter stained with Hematoxylin.

Immunocytochemistry/ Immunofluorescence - Anti-KDM1/LSD1 antibody (ab62582)

Immunofluorescence of LSD1 in Human Small Intestine cells using ab62582 at 20 µg/ml.



Western blot - Anti-KDM1 / LSD1 antibody
(ab62582)

Lane 1 : Anti-KDM1/LSD1 antibody (ab62582) at 1 µg/ml

Lane 2 : Anti-KDM1/LSD1 antibody (ab62582) at 2 µg/ml

All lanes : P815 cell lysate

Lysates/proteins at 15 µg per lane.

Predicted band size: 93 kDa

Observed band size: 105 kDa

Additional bands at: 60 kDa. We are unsure as to the identity of these extra bands.

Please note: All products are "FOR RESEARCH USE ONLY. NOT FOR USE IN DIAGNOSTIC PROCEDURES"

Our Abpromise to you: Quality guaranteed and expert technical support

- Replacement or refund for products not performing as stated on the datasheet
- Valid for 12 months from date of delivery
- Response to your inquiry within 24 hours
- We provide support in Chinese, English, French, German, Japanese and Spanish
- Extensive multi-media technical resources to help you
- We investigate all quality concerns to ensure our products perform to the highest standards

If the product does not perform as described on this datasheet, we will offer a refund or replacement. For full details of the Abpromise, please visit <https://www.abcam.com/abpromise> or contact our technical team.

Terms and conditions

- Guarantee only valid for products bought direct from Abcam or one of our authorized distributors