


Product datasheet

Anti-KDM5A / Jarid1A / RBBP2 antibody ab70892

★★★★★ [5 Abreviews](#) [21 References](#) [4 Images](#)

Overview

Product name	Anti-KDM5A / Jarid1A / RBBP2 antibody
Description	Rabbit polyclonal to KDM5A / Jarid1A / RBBP2
Host species	Rabbit
Tested applications	Suitable for: WB, IP
Species reactivity	Reacts with: Mouse, Human Predicted to work with: Rat, Rabbit, Horse, Guinea pig, Dog, Gorilla, Chinese hamster, Orangutan 
Immunogen	Synthetic peptide corresponding to Human KDM5A/ Jarid1A/ RBBP2 (C terminal). Database link: P29375
General notes	<p>The Life Science industry has been in the grips of a reproducibility crisis for a number of years. Abcam is leading the way in addressing this with our range of recombinant monoclonal antibodies and knockout edited cell lines for gold-standard validation. Please check that this product meets your needs before purchasing.</p> <p>If you have any questions, special requirements or concerns, please send us an inquiry and/or contact our Support team ahead of purchase. Recommended alternatives for this product can be found below, along with publications, customer reviews and Q&As</p>

Properties

Form	Liquid
Storage instructions	Shipped at 4°C. Store at +4°C short term (1-2 weeks). Upon delivery aliquot. Store at -20°C. Avoid freeze / thaw cycle.
Storage buffer	pH: 6.8 Preservative: 0.09% Sodium azide Constituents: 0.1% BSA, Tris buffered saline
Purity	Immunogen affinity purified
Clonality	Polyclonal
Isotype	IgG

Applications

The Abpromise guarantee

Our **Abpromise guarantee** covers the use of ab70892 in the following tested applications.

The application notes include recommended starting dilutions; optimal dilutions/concentrations should be determined by the end user.

Application	Abreviews	Notes
WB	★★★★★ (3)	1/2000 - 1/10000. Detects a band of approximately 196 kDa (predicted molecular weight: 196 kDa).
IP	★★★★★ (1)	Use a concentration of 2 - 5 µg/ml.

Target

Function

Histone demethylase that specifically demethylates 'Lys-4' of histone H3, thereby playing a central role in histone code. Does not demethylate histone H3 'Lys-9', H3 'Lys-27', H3 'Lys-36', H3 'Lys-79' or H4 'Lys-20'. Demethylates trimethylated and dimethylated but not monomethylated H3 'Lys-4'. May stimulate transcription mediated by nuclear receptors. May be involved in transcriptional regulation of Hox proteins during cell differentiation. May participate in transcriptional repression of cytokines such as CXCL12.

Sequence similarities

Belongs to the JARID1 histone demethylase family.
Contains 1 ARID domain.
Contains 1 JmjC domain.
Contains 1 JmjN domain.
Contains 3 PHD-type zinc fingers.

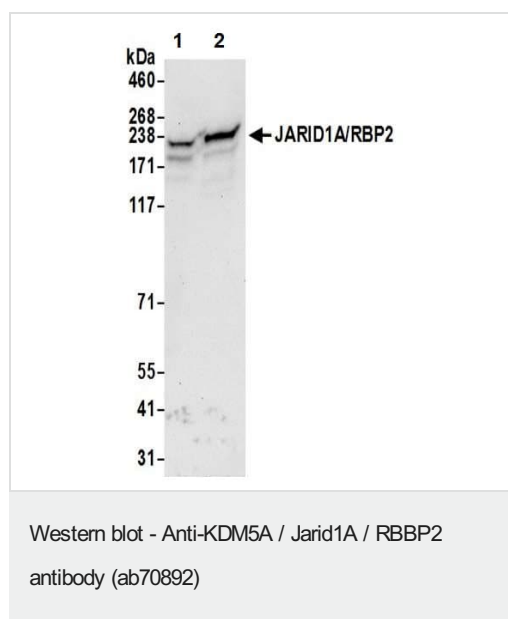
Domain

The GSGFP motif is required for the interaction with SUZ12.

Cellular localization

Nucleus > nucleolus. Occupies promoters of genes involved in RNA metabolism and mitochondrial function.

Images

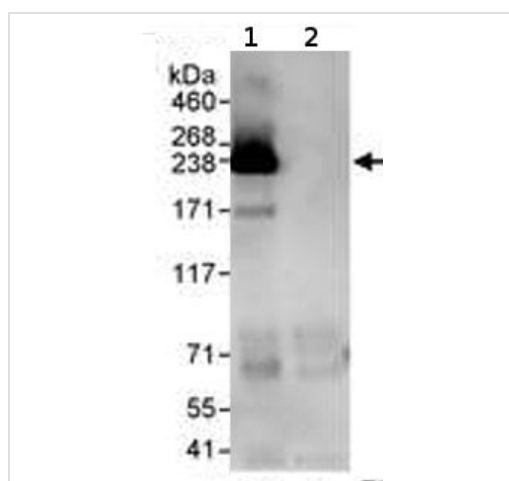


All lanes : Anti-KDM5A / Jarid1A / RBBP2 antibody (ab70892) at 1/2000 dilution

Lane 1 : TCMK-1 (mouse kidney epithelial cell line) cell lysate

Lane 2 : Renca cell lysate

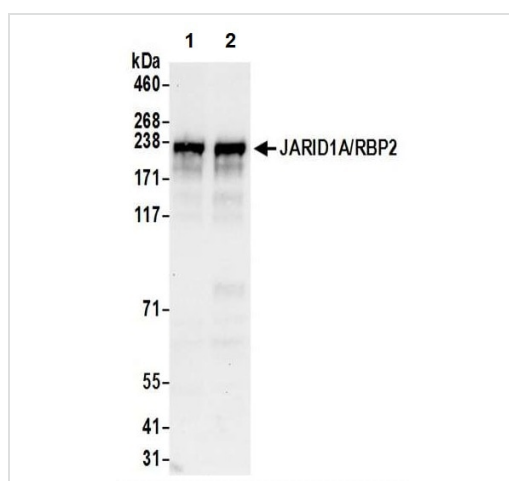
Predicted band size: 196 kDa



Immunoprecipitation - Anti-KDM5A / Jarid1A / RBBP2 antibody (ab70892)

HeLa whole cell lysate (at 1 mg for IP, 20% of IP loaded), with ab70892 at 1 µg/ml for WB, after IP at 3 µg/mg lysate.

Detection: Chemiluminescence with an exposure time of 10 seconds.



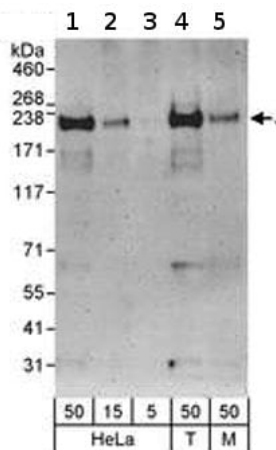
Western blot - Anti-KDM5A / Jarid1A / RBBP2 antibody (ab70892)

All lanes : Anti-KDM5A / Jarid1A / RBBP2 antibody (ab70892) at 1/2000 dilution

Lane 1 : HeLa (human epithelial cell line from cervix adenocarcinoma) cell lysate

Lane 2 : HEK-293T (human epithelial cell line from embryonic kidney transformed with large T antigen) cell lysate

Predicted band size: 196 kDa



Western blot - Anti-KDM5A / Jarid1A / RBBP2 antibody (ab70892)

All lanes : Anti-KDM5A / Jarid1A / RBBP2 antibody (ab70892) at 0.04 µg/ml

Lane 1 : HeLa whole cell lysate at 50 µg

Lane 2 : HeLa whole cell lysate at 15 µg

Lane 3 : HeLa whole cell lysate at 5 µg

Lane 4 : 293T whole cell lysate at 50 µg

Lane 5 : NIH3T3 whole cell lysate at 50 µg

Developed using the ECL technique.

Predicted band size: 196 kDa

Observed band size: 196 kDa

Exposure time: 3 minutes

Please note: All products are "FOR RESEARCH USE ONLY. NOT FOR USE IN DIAGNOSTIC PROCEDURES"

Our Abpromise to you: Quality guaranteed and expert technical support

- Replacement or refund for products not performing as stated on the datasheet
- Valid for 12 months from date of delivery
- Response to your inquiry within 24 hours
- We provide support in Chinese, English, French, German, Japanese and Spanish
- Extensive multi-media technical resources to help you
- We investigate all quality concerns to ensure our products perform to the highest standards

If the product does not perform as described on this datasheet, we will offer a refund or replacement. For full details of the Abpromise, please visit <https://www.abcam.com/abpromise> or contact our technical team.

Terms and conditions

- Guarantee only valid for products bought direct from Abcam or one of our authorized distributors