


# Anti-KDM5B / PLU1 / Jarid1B antibody ab84883

[2 Images](#)

### Overview

<b>Product name</b>	Anti-KDM5B / PLU1 / Jarid1B antibody
<b>Description</b>	Rabbit polyclonal to KDM5B / PLU1 / Jarid1B
<b>Host species</b>	Rabbit
<b>Tested applications</b>	<b>Suitable for:</b> IHC-P
<b>Species reactivity</b>	<b>Reacts with:</b> Human <b>Predicted to work with:</b> Dog, Chimpanzee, Rhesus monkey, Gorilla, Orangutan, Elephant 
<b>Immunogen</b>	Synthetic peptide corresponding to a region between residue 1494 and 1544 of human KDM5B/PLU1/ Jarid1B (accession number: NP_006609.3)
<b>Positive control</b>	Human Controls: Breast Carcinoma, Prostate Carcinoma
<b>General notes</b>	<p>The Life Science industry has been in the grips of a reproducibility crisis for a number of years. Abcam is leading the way in addressing this with our range of recombinant monoclonal antibodies and knockout edited cell lines for gold-standard validation. Please check that this product meets your needs before purchasing.</p> <p>If you have any questions, special requirements or concerns, please send us an inquiry and/or contact our Support team ahead of purchase. Recommended alternatives for this product can be found below, along with publications, customer reviews and Q&amp;As</p>

### Properties

<b>Form</b>	Liquid
<b>Storage instructions</b>	Shipped at 4°C. Upon delivery aliquot and store at -20°C. Avoid freeze / thaw cycles.
<b>Storage buffer</b>	pH: 6.8 Preservative: 0.09% Sodium azide Constituents: 0.1% BSA, Tris buffered saline
<b>Purity</b>	Immunogen affinity purified
<b>Purification notes</b>	Purified using an epitope specific to KDM5B / PLU1 / Jarid1B immobilized on solid support.
<b>Clonality</b>	Polyclonal
<b>Isotype</b>	IgG

## Applications

### The Abpromise guarantee

Our **Abpromise guarantee** covers the use of ab84883 in the following tested applications.

The application notes include recommended starting dilutions; optimal dilutions/concentrations should be determined by the end user.

Application	Abreviews	Notes
IHC-P		

### Application notes

IHC-P: 1/100 - 1/500. Epitope exposure is recommended. Epitope exposure with citrate buffer will enhance staining.

Likely to work with frozen sections.

Not yet tested in other applications.

Optimal dilutions/concentrations should be determined by the end user.

## Target

### Function

Histone demethylase that demethylates 'Lys-4' of histone H3, thereby playing a central role in histone code. Does not demethylate histone H3 'Lys-9' or H3 'Lys-27'. Demethylates trimethylated, dimethylated and monomethylated H3 'Lys-4'. Acts as a transcriptional corepressor for FOXG1B and PAX9. Favors the proliferation of breast cancer cells by repressing tumor suppressor genes such as BRCA1 and HOXA5. In contrast, may act as a tumor suppressor for melanoma.

### Tissue specificity

Ubiquitously expressed, with highest levels in testis. Down-regulated in melanoma and glioblastoma. Up-regulated in breast cancer (at protein level).

### Sequence similarities

Belongs to the JARID1 histone demethylase family.

Contains 1 ARID domain.

Contains 1 JmjC domain.

Contains 1 JmjN domain.

Contains 3 PHD-type zinc fingers.

### Domain

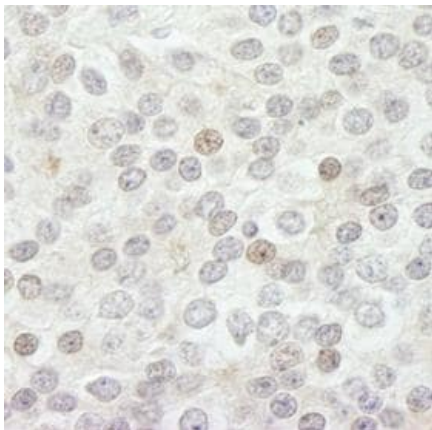
Both the JmjC domain and the JmjN domain are required for enzymatic activity.

The 2 first PHD-type zinc finger domains are required for transcription repression activity.

### Cellular localization

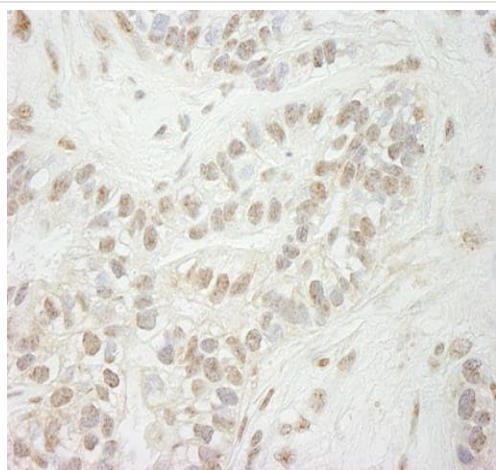
Nucleus.

## Images



Detection of Human Jarid1B in a formalin-fixed paraffin-embedded section of human prostate carcinoma by Immunohistochemistry using ab84883 at a dilution of 1:500. Detection: DAB staining.

Immunohistochemistry (Formalin/PFA-fixed paraffin-embedded sections) - Anti-KDM5B / PLU1 / Jarid1B antibody (ab84883)



Detection of Human Jarid1B in a formalin-fixed paraffin-embedded section of human breast carcinoma by Immunohistochemistry using ab84883 at a dilution of 1:250. Detection: DAB staining.

Immunohistochemistry (Formalin/PFA-fixed paraffin-embedded sections) - Anti-KDM5B / PLU1 / Jarid1B antibody (ab84883)

**Please note:** All products are "FOR RESEARCH USE ONLY. NOT FOR USE IN DIAGNOSTIC PROCEDURES"

**Our Abpromise to you: Quality guaranteed and expert technical support**

- Replacement or refund for products not performing as stated on the datasheet
- Valid for 12 months from date of delivery
- Response to your inquiry within 24 hours
- We provide support in Chinese, English, French, German, Japanese and Spanish
- Extensive multi-media technical resources to help you
- We investigate all quality concerns to ensure our products perform to the highest standards

If the product does not perform as described on this datasheet, we will offer a refund or replacement. For full details of the Abpromise, please visit <https://www.abcam.com/abpromise> or contact our technical team.

#### **Terms and conditions**

---

- Guarantee only valid for products bought direct from Abcam or one of our authorized distributors