


## Product datasheet

# Anti-KDM5C / Jarid1C / SMCX antibody ab72152

[1 References](#) [2 Images](#)

### Overview

---

<b>Product name</b>	Anti-KDM5C / Jarid1C / SMCX antibody
<b>Description</b>	Rabbit polyclonal to KDM5C / Jarid1C / SMCX
<b>Host species</b>	Rabbit
<b>Tested applications</b>	<b>Suitable for:</b> WB, IP
<b>Species reactivity</b>	<b>Reacts with:</b> Mouse, Human <b>Predicted to work with:</b> Horse, Dog, Pig, Chimpanzee, Rhesus monkey, Gorilla, Orangutan, Elephant 
<b>Immunogen</b>	Synthetic peptide corresponding to Human KDM5C/ Jarid1C/ SMCX aa 275-325. Database link: <a href="#">P41229</a>

### General notes

The Life Science industry has been in the grips of a reproducibility crisis for a number of years. Abcam is leading the way in addressing this with our range of recombinant monoclonal antibodies and knockout edited cell lines for gold-standard validation. Please check that this product meets your needs before purchasing.

If you have any questions, special requirements or concerns, please send us an inquiry and/or contact our Support team ahead of purchase. Recommended alternatives for this product can be found below, along with publications, customer reviews and Q&As

### Properties

---

<b>Form</b>	Liquid
<b>Storage instructions</b>	Shipped at 4°C. Upon delivery aliquot and store at -20°C. Avoid freeze / thaw cycles.
<b>Storage buffer</b>	pH: 6.8 Preservative: 0.09% Sodium azide Constituents: 0.1% BSA, Tris buffered saline
<b>Purity</b>	Immunogen affinity purified
<b>Clonality</b>	Polyclonal
<b>Isotype</b>	IgG

### Applications

---

**The Abpromise guarantee**

Our **Abpromise guarantee** covers the use of ab72152 in the following tested applications.

The application notes include recommended starting dilutions; optimal dilutions/concentrations should be determined by the end user.

Application	Abreviews	Notes
WB		1/2000 - 1/10000. Detects a band of approximately 200 kDa (predicted molecular weight: 176 kDa).
IP		Use at 2 µg/mg of lysate.

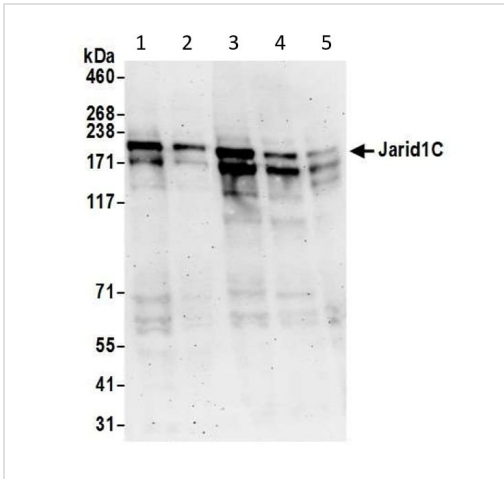
---

**Target**

<b>Function</b>	Histone demethylase that specifically demethylates 'Lys-4' of histone H3, thereby playing a central role in histone code. Does not demethylate histone H3 'Lys-9', H3 'Lys-27', H3 'Lys-36', H3 'Lys-79' or H4 'Lys-20'. Demethylates trimethylated and dimethylated but not monomethylated H3 'Lys-4'. Participates in transcriptional repression of neuronal genes by recruiting histone deacetylases and REST at neuron-restrictive silencer elements.
<b>Tissue specificity</b>	Expressed in all tissues examined. Highest levels found in brain and skeletal muscle.
<b>Involvement in disease</b>	Defects in KDM5C are the cause of mental retardation syndromic X-linked JARID1C-related (MRXSJ) [MIM:300534]. MRXSJ is characterized by significantly sub-average general intellectual functioning associated with impairments in adaptative behavior and manifested during the developmental period. MRXSJ patients manifest mental retardation associated with variable features such as slowly progressive spastic paraplegia, seizures, facial dysmorphism.
<b>Sequence similarities</b>	Belongs to the JARID1 histone demethylase family. Contains 1 ARID domain. Contains 1 JmjC domain. Contains 1 JmjN domain. Contains 2 PHD-type zinc fingers.
<b>Domain</b>	The first PHD-type zinc finger domain recognizes and binds H3-K9Me3. Both the JmjC domain and the JmjN domain are required for enzymatic activity.
<b>Cellular localization</b>	Nucleus.

---

**Images**



Western blot - Anti-KDM5C / Jarid1C / SMCX antibody (ab72152)

**All lanes :** Anti-KDM5C / Jarid1C / SMCX antibody (ab72152) at 0.04 µg/ml

**Lane 1 :** HeLa whole cell lysate at 50 µg

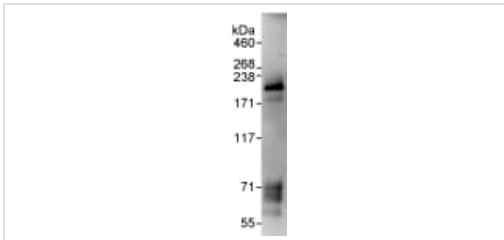
**Lane 2 :** HeLa whole cell lysate at 15 µg

**Lane 3 :** HEK293T whole cell lysate at 50 µg

**Lane 4 :** Jurkat whole cell lysate at 50 µg

**Lane 5 :** NIH 3T3 whole cell lysate at 50 µg

**Predicted band size:** 176 kDa



Immunoprecipitation - Anti-KDM5C / Jarid1C / SMCX antibody (ab72152)

Detection of Human KDM5C / Jarid1C / SMCX by Immunoprecipitation in Whole cell lysate from HeLa cells (1 mg/IP, 20% of IP loaded) using ab72152 at 3 µg/mg lysate for IP and at 0.1 µg/ml for subsequent WB detection. Note: bands between 55 and 71 kDa represent the IgG chains.

**Please note:** All products are "FOR RESEARCH USE ONLY. NOT FOR USE IN DIAGNOSTIC PROCEDURES"

### Our Abpromise to you: Quality guaranteed and expert technical support

- Replacement or refund for products not performing as stated on the datasheet
- Valid for 12 months from date of delivery
- Response to your inquiry within 24 hours
- We provide support in Chinese, English, French, German, Japanese and Spanish
- Extensive multi-media technical resources to help you
- We investigate all quality concerns to ensure our products perform to the highest standards

If the product does not perform as described on this datasheet, we will offer a refund or replacement. For full details of the Abpromise, please visit <https://www.abcam.com/abpromise> or contact our technical team.

### Terms and conditions

- Guarantee only valid for products bought direct from Abcam or one of our authorized distributors