


Product datasheet

Anti-Keratin 36 antibody ab111599

[1 References](#) [2 Images](#)

Overview

Product name	Anti-Keratin 36 antibody
Description	Rabbit polyclonal to Keratin 36
Host species	Rabbit
Tested applications	Suitable for: WB, ICC/IF
Species reactivity	Reacts with: Human Predicted to work with: Mouse, Cow 
Immunogen	Recombinant fragment, corresponding to a region within amino acids 1-173 of Human Keratin 36 (AAH43581).
Positive control	HeLa cells and whole cell lysate
General notes	<p>The Life Science industry has been in the grips of a reproducibility crisis for a number of years. Abcam is leading the way in addressing this with our range of recombinant monoclonal antibodies and knockout edited cell lines for gold-standard validation. Please check that this product meets your needs before purchasing.</p> <p>If you have any questions, special requirements or concerns, please send us an inquiry and/or contact our Support team ahead of purchase. Recommended alternatives for this product can be found below, along with publications, customer reviews and Q&As</p>

Properties

Form	Liquid
Storage instructions	Shipped at 4°C. Upon delivery aliquot and store at -20°C or -80°C. Avoid repeated freeze / thaw cycles.
Storage buffer	pH: 7.00 Preservative: 0.01% Thimerosal (merthiolate) Constituents: 1.21% Tris, 0.75% Glycine, 20% Glycerol (glycerin, glycerine)
Purity	Immunogen affinity purified
Purification notes	ab111599 is purified by antigen affinity chromatography.
Clonality	Polyclonal
Isotype	IgG

Applications

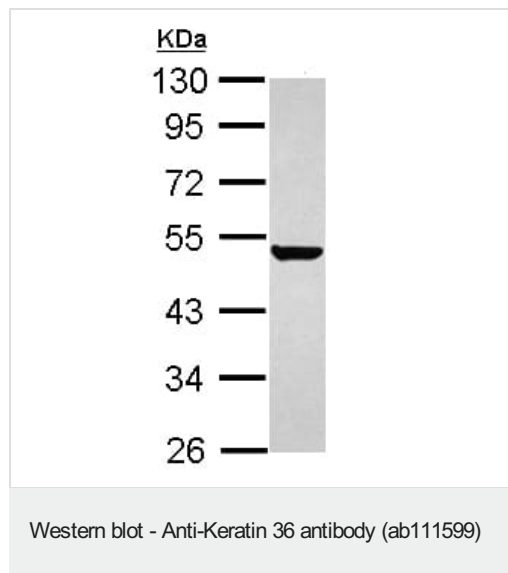
The Abpromise guarantee Our **Abpromise guarantee** covers the use of ab111599 in the following tested applications. The application notes include recommended starting dilutions; optimal dilutions/concentrations should be determined by the end user.

Application	Abreviews	Notes
WB		1/500 - 1/3000. Predicted molecular weight: 52 kDa.
ICC/IF		1/100 - 1/500.

Target

Tissue specificity Expressed in the hair follicle.
Sequence similarities Belongs to the intermediate filament family.

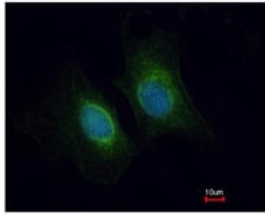
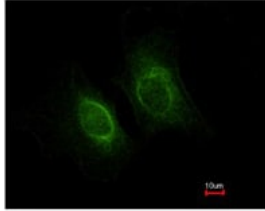
Images



Anti-Keratin 36 antibody (ab111599) at 1/1000 dilution + HeLa whole cell lysate at 30 µg

Predicted band size: 52 kDa

10% SDS-PAGE.



Immunocytochemistry/ Immunofluorescence - Anti-Keratin 36 antibody (ab111599)

ab111599 at 1/200 dilution staining Keratin 36 in methanol-fixed HeLa cells by Immunofluorescence. Lower image shows cells co-stained with Hoechst 33342.

Please note: All products are "FOR RESEARCH USE ONLY. NOT FOR USE IN DIAGNOSTIC PROCEDURES"

Our Abpromise to you: Quality guaranteed and expert technical support

- Replacement or refund for products not performing as stated on the datasheet
- Valid for 12 months from date of delivery
- Response to your inquiry within 24 hours

- We provide support in Chinese, English, French, German, Japanese and Spanish
- Extensive multi-media technical resources to help you
- We investigate all quality concerns to ensure our products perform to the highest standards

If the product does not perform as described on this datasheet, we will offer a refund or replacement. For full details of the Abpromise, please visit <https://www.abcam.com/abpromise> or contact our technical team.

Terms and conditions

- Guarantee only valid for products bought direct from Abcam or one of our authorized distributors