


Anti-KIAA0020 antibody ab156692

2 Images

Overview

Product name	Anti-KIAA0020 antibody
Description	Rabbit polyclonal to KIAA0020
Host species	Rabbit
Tested applications	Suitable for: WB, IP
Species reactivity	Reacts with: Human Predicted to work with: Chimpanzee, Macaque monkey, Rhesus monkey, Gorilla, Common marmoset 
Immunogen	Synthetic peptide corresponding to a region within amino acids 1-50 of Human KIAA0020 (NP_055693.4).
Positive control	HeLa whole cell lysate
General notes	<p>The Life Science industry has been in the grips of a reproducibility crisis for a number of years. Abcam is leading the way in addressing this with our range of recombinant monoclonal antibodies and knockout edited cell lines for gold-standard validation. Please check that this product meets your needs before purchasing.</p> <p>If you have any questions, special requirements or concerns, please send us an inquiry and/or contact our Support team ahead of purchase. Recommended alternatives for this product can be found below, along with publications, customer reviews and Q&As</p>

Properties

Form	Liquid
Storage instructions	Shipped at 4°C. Store at +4°C.
Storage buffer	<p>pH: 7</p> <p>Preservative: 0.09% Sodium azide</p> <p>Constituent: 99% Tris citrate/phosphate</p> <p>pH 7 to 8</p>
Purity	Immunogen affinity purified
Purification notes	ab156692 was affinity purified using an epitope specific to KIAA0020 immobilized on solid support.
Clonality	Polyclonal

Isotype

IgG

Applications

The Abpromise guarantee

Our **Abpromise guarantee** covers the use of ab156692 in the following tested applications.

The application notes include recommended starting dilutions; optimal dilutions/concentrations should be determined by the end user.

Application	Abreviews	Notes
WB		1/2000 - 1/10000. Predicted molecular weight: 74 kDa.
IP		Use at 2-10 µg/mg of lysate.

Target

Tissue specificity

Widely expressed.

Sequence similarities

Contains 1 PUM-HD domain.

Contains 6 pumilio repeats.

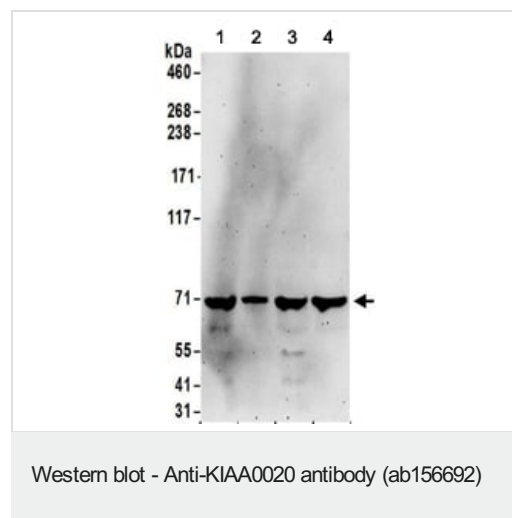
Domain

The HA-8 region can be cleaved and exposed at the cell surface where it plays a role as a minor histocompatibility HLA-A*0201-restricted antigen.

Cellular localization

Nucleus > nucleolus.

Images



All lanes : Anti-KIAA0020 antibody (ab156692) at 0.1 µg/ml

Lane 1 : HeLa whole cell lysate at 50 µg

Lane 2 : HeLa whole cell lysate at 15 µg

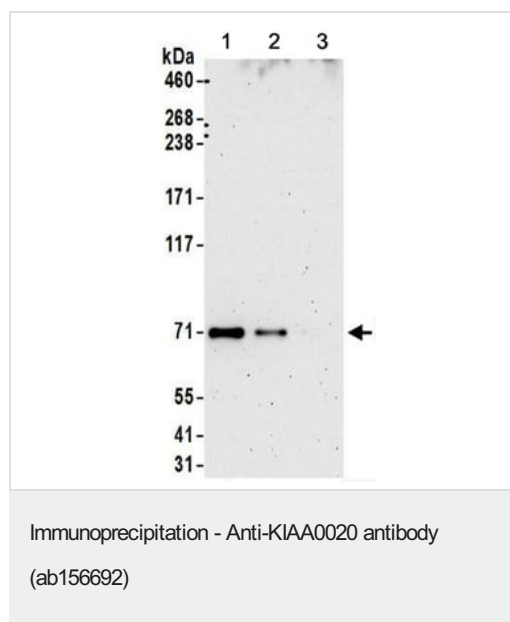
Lane 3 : 293T whole cell lysate at 50 µg

Lane 4 : Jurkat whole cell lysate at 50 µg

Developed using the ECL technique.

Predicted band size: 74 kDa

Exposure time: 3 minutes



Detection of KIAA0020 by Western blot of immunoprecipitate.
Immunoprecipitation of KIAA0020 (6 µg of antibody per mg of HeLa whole cell lysate; 1 mg/IP; 20% of IP loaded/lane), using the following:

Lane 1: ab156692

Lane 2: alternative anti-KIAA0020 antibody

Lane 3: Control IgG

For the subsequent Western blot of immunoprecipitates, ab156692 was used at 1 µg/ml.

Detection: Chemiluminescence with exposure time of 3 minutes.

Lane 1 : Anti-KIAA0020 antibody (ab156692) at 1 µg/ml

Lane 2 : Alternative rabbit anti-KIAA0020 antibody

Lane 3 : Control IgG

All lanes : HeLa whole cell lysate

Please note: All products are "FOR RESEARCH USE ONLY. NOT FOR USE IN DIAGNOSTIC PROCEDURES"

Our Abpromise to you: Quality guaranteed and expert technical support

- Replacement or refund for products not performing as stated on the datasheet
- Valid for 12 months from date of delivery
- Response to your inquiry within 24 hours
- We provide support in Chinese, English, French, German, Japanese and Spanish
- Extensive multi-media technical resources to help you
- We investigate all quality concerns to ensure our products perform to the highest standards

If the product does not perform as described on this datasheet, we will offer a refund or replacement. For full details of the Abpromise, please visit <https://www.abcam.com/abpromise> or contact our technical team.

Terms and conditions

- Guarantee only valid for products bought direct from Abcam or one of our authorized distributors