

## Product datasheet

### Anti-KIAA1468 antibody ab122576

2 Images

#### Overview

<b>Product name</b>	Anti-KIAA1468 antibody
<b>Description</b>	Rabbit polyclonal to KIAA1468
<b>Host species</b>	Rabbit
<b>Tested applications</b>	<b>Suitable for:</b> IHC-P, WB
<b>Species reactivity</b>	<b>Reacts with:</b> Human
<b>Immunogen</b>	antigen sequence: NVLLAKREEL IPLILCTACL HPEPKERDQL LHILFNLIKRPDDEQRQMIL TGCVAFARHV GPTRVEAELL PQCWEQINHK YPERRLLV, corresponding to internal sequence amino acids 533-620 of Human KIAA1468. <a href="#">Run BLAST with</a> <a href="#">Expasy</a> <a href="#">Run BLAST with</a> <a href="#">NCBI</a>
<b>Positive control</b>	Human kidney tissue, Human liver lysate.
<b>General notes</b>	<p>The Life Science industry has been in the grips of a reproducibility crisis for a number of years. Abcam is leading the way in addressing this with our range of recombinant monoclonal antibodies and knockout edited cell lines for gold-standard validation. Please check that this product meets your needs before purchasing.</p> <p>If you have any questions, special requirements or concerns, please send us an inquiry and/or contact our Support team ahead of purchase. Recommended alternatives for this product can be found below, along with publications, customer reviews and Q&amp;As</p>

#### Properties

<b>Form</b>	Liquid
<b>Storage instructions</b>	Shipped at 4°C. Store at -20°C or -80°C. Avoid freeze / thaw cycle. Store undiluted.
<b>Storage buffer</b>	pH: 7.20 Preservative: 0.02% Sodium azide Constituents: 59% PBS, 40% Glycerol (glycerin, glycerine)
<b>Purity</b>	Immunogen affinity purified
<b>Clonality</b>	Polyclonal
<b>Isotype</b>	IgG

#### Applications

## The Abpromise guarantee

Our **Abpromise guarantee** covers the use of ab122576 in the following tested applications.

The application notes include recommended starting dilutions; optimal dilutions/concentrations should be determined by the end user.

Application	Abreviews	Notes
IHC-P		1/50 - 1/200. Perform heat mediated antigen retrieval with citrate buffer pH 6 before commencing with IHC staining protocol.
WB		Use a concentration of 0.04 - 0.4 µg/ml.

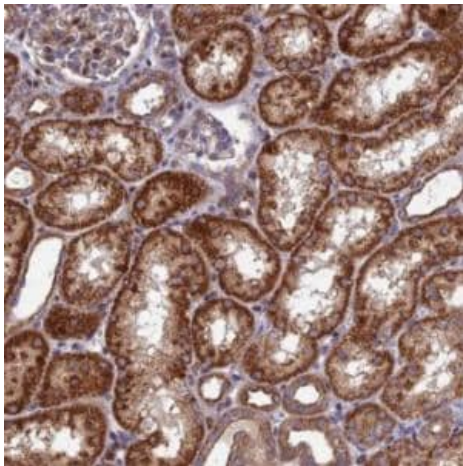
## Target

### Sequence similarities

Contains 3 HEAT repeats.

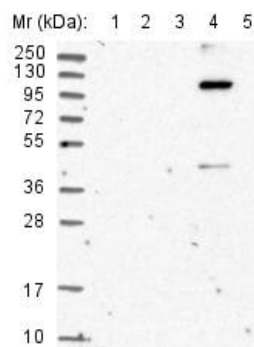
Contains 1 LisH domain.

## Images



Immunohistochemistry (Formalin/PFA-fixed paraffin-embedded sections) - Anti-KIAA1468 antibody (ab122576)

ab122576, at 1/50 dilution, staining KIAA1468 in paraffin-embedded Human kidney tissue by Immunohistochemistry.



Western blot - Anti-KIAA1468 antibody (ab122576)

**All lanes :** Anti-KIAA1468 antibody (ab122576) at 1/250 dilution

**Lane 1 :** RT 4 cell lysate

**Lane 2 :** U 251 MG cell lysate

**Lane 3 :** Human plasma

**Lane 4 :** Human liver lysate

**Lane 5 :** Human tonsil lysate

Developed using the ECL technique.

**Please note:** All products are "FOR RESEARCH USE ONLY. NOT FOR USE IN DIAGNOSTIC PROCEDURES"

### **Our Abpromise to you: Quality guaranteed and expert technical support**

---

- Replacement or refund for products not performing as stated on the datasheet
- Valid for 12 months from date of delivery
- Response to your inquiry within 24 hours
  
- We provide support in Chinese, English, French, German, Japanese and Spanish
- Extensive multi-media technical resources to help you
- We investigate all quality concerns to ensure our products perform to the highest standards

If the product does not perform as described on this datasheet, we will offer a refund or replacement. For full details of the Abpromise, please visit <https://www.abcam.com/abpromise> or contact our technical team.

### **Terms and conditions**

---

- Guarantee only valid for products bought direct from Abcam or one of our authorized distributors