


Product datasheet

Anti-KIF13A antibody ab72414

[2 Images](#)

Overview

Product name	Anti-KIF13A antibody
Description	Rabbit polyclonal to KIF13A
Host species	Rabbit
Tested applications	Suitable for: WB, IP
Species reactivity	Reacts with: Human Predicted to work with: Horse, Chimpanzee, Rhesus monkey, Gorilla, Orangutan, Bat 
Immunogen	Synthetic peptide corresponding to a region between residues 1675 and 1725 of human KIF13A (NP_071396.3)
Positive control	HeLa whole cell lysate.
General notes	<p>The Life Science industry has been in the grips of a reproducibility crisis for a number of years. Abcam is leading the way in addressing this with our range of recombinant monoclonal antibodies and knockout edited cell lines for gold-standard validation. Please check that this product meets your needs before purchasing.</p> <p>If you have any questions, special requirements or concerns, please send us an inquiry and/or contact our Support team ahead of purchase. Recommended alternatives for this product can be found below, along with publications, customer reviews and Q&As</p>

Properties

Form	Liquid
Storage instructions	Shipped at 4°C. Upon delivery aliquot and store at -20°C. Avoid freeze / thaw cycles.
Storage buffer	pH: 6.8 Preservative: 0.09% Sodium azide Constituents: 0.1% BSA, Tris buffered saline
Purity	Immunogen affinity purified
Purification notes	ab72414 was affinity purified using an epitope specific to KIF13A immobilized on solid support.
Clonality	Polyclonal
Isotype	IgG

Applications

Applications

The Abpromise guarantee Our **Abpromise guarantee** covers the use of ab72414 in the following tested applications. The application notes include recommended starting dilutions; optimal dilutions/concentrations should be determined by the end user.

Application	Abreviews	Notes
WB		1/2000 - 1/10000. Detects a band of approximately 238 kDa (predicted molecular weight: 203 kDa).
IP		Use at 2-5 µg/mg of lysate.

Target

Function

Plus end-directed microtubule-dependent motor protein involved in intracellular transport and regulating various processes such as mannose-6-phosphate receptor (M6PR) transport to the plasma membrane, endosomal sorting during melanosome biogenesis and cytokinesis. Mediates the transport of M6PR-containing vesicles from trans-Golgi network to the plasma membrane via direct interaction with the AP-1 complex. During melanosome maturation, required for delivering melanogenic enzymes from recycling endosomes to nascent melanosomes by creating peripheral recycling endosomal subdomains in melanocytes. Also required for the abscission step in cytokinesis: mediates translocation of ZFYVE26, and possibly TTC19, to the midbody during cytokinesis.

Tissue specificity

Widely expressed, with highest levels in heart, brain and skeletal muscle.

Sequence similarities

Belongs to the kinesin-like protein family.
Contains 1 FHA domain.
Contains 1 kinesin-motor domain.

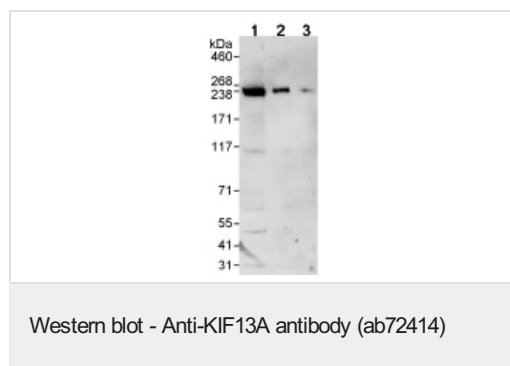
Developmental stage

Expressed at very low level in most fetal tissues, but at higher levels in skeletal muscle and lung.

Cellular localization

Cytoplasm > cytoskeleton > centrosome. Midbody. Endosome membrane. Golgi apparatus membrane. Recruited to the midbody during cytokinesis.

Images



All lanes : Anti-KIF13A antibody (ab72414) at 0.04 µg/ml

Lane 1 : HeLa whole cell lysate at 50 µg

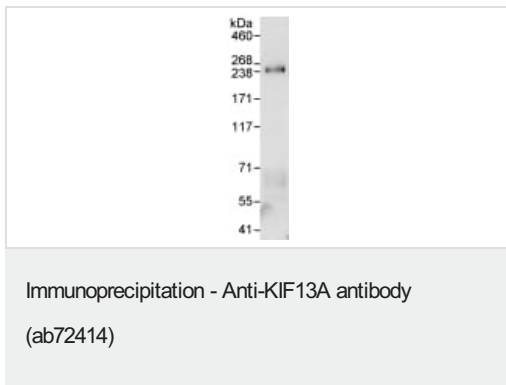
Lane 2 : HeLa whole cell lysate at 15 µg

Lane 3 : HeLa whole cell lysate at 5 µg

Predicted band size: 203 kDa

Observed band size: 238 kDa

Exposure time: 3 minutes



Detection of KIF13A by Western Blot of Immunoprecipitate.
ab72414, at 1µg/ml, staining KIF13A in HeLa whole cell lysate
immunoprecipitated using ab72414 at 3µg/mg lysate (1 mg/IP; 20%
of IP loaded/lane).
Detection: Chemiluminescence with exposure time of 30 seconds.

Please note: All products are "FOR RESEARCH USE ONLY. NOT FOR USE IN DIAGNOSTIC PROCEDURES"

Our Abpromise to you: Quality guaranteed and expert technical support

- Replacement or refund for products not performing as stated on the datasheet
- Valid for 12 months from date of delivery
- Response to your inquiry within 24 hours
- We provide support in Chinese, English, French, German, Japanese and Spanish
- Extensive multi-media technical resources to help you
- We investigate all quality concerns to ensure our products perform to the highest standards

If the product does not perform as described on this datasheet, we will offer a refund or replacement. For full details of the Abpromise, please visit <https://www.abcam.com/abpromise> or contact our technical team.

Terms and conditions

- Guarantee only valid for products bought direct from Abcam or one of our authorized distributors