


## Product datasheet

### Anti-Kinetochore antibody ab85996

★ ★ ★ ★ ★ [1 Abreviews](#) [1 References](#) [2 Images](#)

#### Overview

<b>Product name</b>	Anti-Kinetochore antibody
<b>Description</b>	Rabbit polyclonal to Kinetochore
<b>Host species</b>	Rabbit
<b>Tested applications</b>	<b>Suitable for:</b> WB, IP
<b>Species reactivity</b>	<b>Reacts with:</b> Human <b>Predicted to work with:</b> Rabbit, Horse, Chicken, Guinea pig, Cow, Dog, Turkey, Chimpanzee, Rhesus monkey, Gorilla, Xenopus tropicalis, Platypus 
<b>Immunogen</b>	Synthetic peptide corresponding to Human Kinetochore aa 350-450. Database link: <a href="#">P50748</a>
<b>Positive control</b>	HeLa whole cell lysate
<b>General notes</b>	<p>The Life Science industry has been in the grips of a reproducibility crisis for a number of years. Abcam is leading the way in addressing this with our range of recombinant monoclonal antibodies and knockout edited cell lines for gold-standard validation. Please check that this product meets your needs before purchasing.</p> <p>If you have any questions, special requirements or concerns, please send us an inquiry and/or contact our Support team ahead of purchase. Recommended alternatives for this product can be found below, along with publications, customer reviews and Q&amp;As</p>

#### Properties

<b>Form</b>	Liquid
<b>Storage instructions</b>	Shipped at 4°C. Upon delivery aliquot and store at -20°C. Avoid freeze / thaw cycles.
<b>Storage buffer</b>	pH: 6.8 Preservative: 0.09% Sodium azide Constituents: Tris buffered saline, 0.1% BSA
<b>Purity</b>	Immunogen affinity purified
<b>Purification notes</b>	ab85996 was affinity purified using an epitope specific to Kinetochore immobilized on solid support.
<b>Clonality</b>	Polyclonal
<b>Isotype</b>	IgG

## Applications

### The Abpromise guarantee

Our **Abpromise guarantee** covers the use of ab85996 in the following tested applications.

The application notes include recommended starting dilutions; optimal dilutions/concentrations should be determined by the end user.

Application	Abreviews	Notes
WB		1/2000 - 1/10000. Predicted molecular weight: 250 kDa.
IP		Use at 2-5 µg/mg of lysate.

## Target

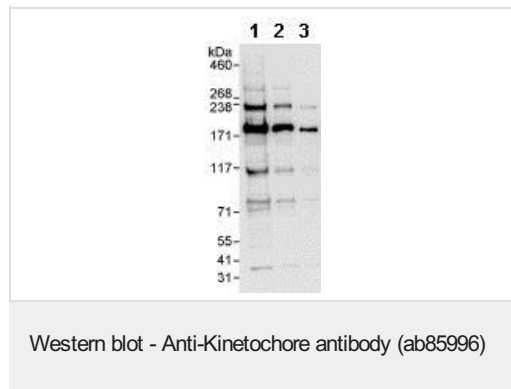
### Relevance

The kinetochore is the protein structure in eukaryotes which assembles on the centromere and links the chromosome to microtubule polymers from the mitotic spindle during mitosis and meiosis. The kinetochore contains two regions: an inner kinetochore, which is tightly associated with the centromere DNA; and an outer kinetochore, which interacts with microtubules. Even the simplest kinetochores consist of more than 45 different proteins, many of which are conserved throughout eukaryote species.

### Cellular localization

Cytoplasmic and Nuclear

## Images



**All lanes :** Anti-Kinetochore antibody (ab85996) at 0.04 µg/ml

**Lane 1 :** HeLa whole cell lysate at 50 µg

**Lane 2 :** HeLa whole cell lysate at 15 µg

**Lane 3 :** HeLa whole cell lysate at 5 µg

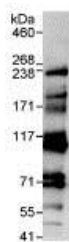
Developed using the ECL technique.

**Predicted band size:** 250 kDa

**Observed band size:** 250 kDa

**Additional bands at:** 115 kDa, 175 kDa. We are unsure as to the identity of these extra bands.

**Exposure time:** 10 seconds



Immunoprecipitation - Anti-Kinetochore antibody  
(ab85996)

Detection of Kinetochore by Western Blot of Immunoprecipitate.  
ab85996, at 1 µg/ml, staining Kinetochore in HeLa whole cell lysate immunoprecipitated using **ab8599** at 3 µg/mg lysate (1 mg/IP; 20% of IP loaded/lane).

Detection: Chemiluminescence with exposure time of 10 seconds.

**Please note:** All products are "FOR RESEARCH USE ONLY. NOT FOR USE IN DIAGNOSTIC PROCEDURES"

### Our Abpromise to you: Quality guaranteed and expert technical support

- Replacement or refund for products not performing as stated on the datasheet
- Valid for 12 months from date of delivery
- Response to your inquiry within 24 hours
- We provide support in Chinese, English, French, German, Japanese and Spanish
- Extensive multi-media technical resources to help you
- We investigate all quality concerns to ensure our products perform to the highest standards

If the product does not perform as described on this datasheet, we will offer a refund or replacement. For full details of the Abpromise, please visit <https://www.abcam.com/abpromise> or contact our technical team.

### Terms and conditions

- Guarantee only valid for products bought direct from Abcam or one of our authorized distributors