

Product datasheet

Anti-Kininogen 1 antibody ab97761

★★★★★ [1 Abreviews](#) [1 References](#) [3 Images](#)

Overview

Product name	Anti-Kininogen 1 antibody
Description	Rabbit polyclonal to Kininogen 1
Host species	Rabbit
Tested applications	Suitable for: WB, IHC-P, ICC/IF
Species reactivity	Reacts with: Human
Immunogen	Recombinant fragment, corresponding to amino acids 10-426 of Human Kininogen 1
Positive control	293T, A431, H1299, HeLa, HepG2, MOLT4 or Raji cell line.
General notes	<p>The Life Science industry has been in the grips of a reproducibility crisis for a number of years. Abcam is leading the way in addressing this with our range of recombinant monoclonal antibodies and knockout edited cell lines for gold-standard validation. Please check that this product meets your needs before purchasing.</p> <p>If you have any questions, special requirements or concerns, please send us an inquiry and/or contact our Support team ahead of purchase. Recommended alternatives for this product can be found below, along with publications, customer reviews and Q&As</p>

Properties

Form	Liquid
Storage instructions	Shipped at 4°C. Upon delivery aliquot and store at -20°C. Avoid repeated freeze / thaw cycles.
Storage buffer	<p>pH: 7.00</p> <p>Preservative: 0.01% Thimerosal (merthiolate)</p> <p>Constituents: 1.21% Tris, 0.75% Glycine, 10% Glycerol (glycerin, glycerine)</p>
Purity	Immunogen affinity purified
Clonality	Polyclonal
Isotype	IgG

Applications

The Abpromise guarantee Our **Abpromise guarantee** covers the use of ab97761 in the following tested applications. The application notes include recommended starting dilutions; optimal dilutions/concentrations should be determined by the end user.

Application	Abreviews	Notes
WB	★★★★★ (1)	1/500 - 1/3000. Predicted molecular weight: 48 kDa.
IHC-P		1/100 - 1/500.
ICC/IF		1/100 - 1/200.

Target

Function

(1) Kininogens are inhibitors of thiol proteases; (2) HMW-kininogen plays an important role in blood coagulation by helping to position optimally prekallikrein and factor XI next to factor XII; (3) HMW-kininogen inhibits the thrombin- and plasmin-induced aggregation of thrombocytes; (4) the active peptide bradykinin that is released from HMW-kininogen shows a variety of physiological effects: (4A) influence in smooth muscle contraction, (4B) induction of hypotension, (4C) natriuresis and diuresis, (4D) decrease in blood glucose level, (4E) it is a mediator of inflammation and causes (4E1) increase in vascular permeability, (4E2) stimulation of nociceptors (4E3) release of other mediators of inflammation (e.g. prostaglandins), (4F) it has a cardioprotective effect (directly via bradykinin action, indirectly via endothelium-derived relaxing factor action); (5) LMW-kininogen inhibits the aggregation of thrombocytes; (6) LMW-kininogen is in contrast to HMW-kininogen not involved in blood clotting.

Tissue specificity

Secreted in plasma. T-kinin is detected in malignant ovarian, colon and breast carcinomas, but not in benign tumors.

Involvement in disease

Defects in KNG1 are the cause of high molecular weight kininogen deficiency (HMWK deficiency) [MIM:228960]. HMWK deficiency is an autosomal recessive coagulation defect. Patients with HMWK deficiency do not have a hemorrhagic tendency, but they exhibit abnormal surface-mediated activation of fibrinolysis.

Sequence similarities

Contains 3 cystatin domains.

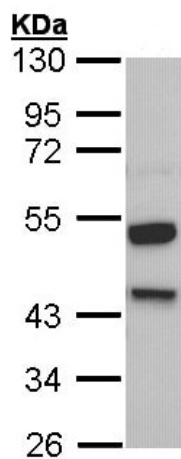
Post-translational modifications

Bradykinin is released from kininogen by plasma kallikrein.
Hydroxylation of Pro-383 occurs prior to the release of bradykinin.
Phosphorylation sites are present in the extracellular medium.
N- and O-glycosylated. O-glycosylated with core 1 or possibly core 8 glycans.

Cellular localization

Secreted > extracellular space.

Images

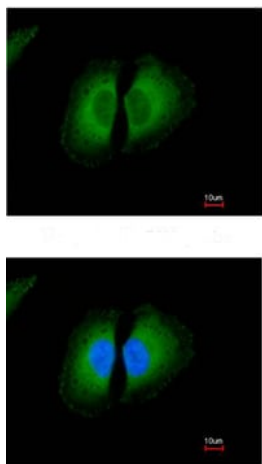


Western blot - Anti-Kininogen 1 antibody (ab97761)

Anti-Kininogen 1 antibody (ab97761) at 1/1000 dilution + MOLT4 whole cell lysate at 30 μ g

Predicted band size: 48 kDa

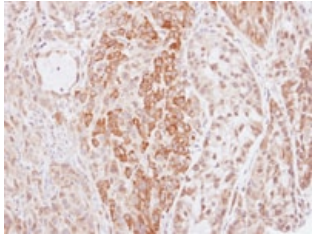
10% SDS-PAGE.



Immunocytochemistry/ Immunofluorescence - Anti-Kininogen 1 antibody (ab97761)

ab76197 at 1/200 dilution staining Kininogen in paraformaldehyde-fixed HeLa cells by immunofluorescence .

Lower image is merged with DNA probe.



ab97761 at 1/500 dilution staining Kininogen in paraffin-embedded A549 xenograft tissue by immunohistochemistry.

Immunohistochemistry (Formalin/PFA-fixed paraffin-embedded sections) - Anti-Kininogen 1 antibody (ab97761)

Please note: All products are "FOR RESEARCH USE ONLY. NOT FOR USE IN DIAGNOSTIC PROCEDURES"

Our Abpromise to you: Quality guaranteed and expert technical support

- Replacement or refund for products not performing as stated on the datasheet
- Valid for 12 months from date of delivery
- Response to your inquiry within 24 hours
- We provide support in Chinese, English, French, German, Japanese and Spanish
- Extensive multi-media technical resources to help you
- We investigate all quality concerns to ensure our products perform to the highest standards

If the product does not perform as described on this datasheet, we will offer a refund or replacement. For full details of the Abpromise, please visit <https://www.abcam.com/abpromise> or contact our technical team.

Terms and conditions

- Guarantee only valid for products bought direct from Abcam or one of our authorized distributors