


Product datasheet

Anti-KLC3 antibody [EPR11149(2)] ab180523

Recombinant RabMAb

[3 References](#) [6 Images](#)

Overview

Product name	Anti-KLC3 antibody [EPR11149(2)]
Description	Rabbit monoclonal [EPR11149(2)] to KLC3
Host species	Rabbit
Tested applications	Suitable for: ICC/IF, Flow Cyt (Intra), WB, IHC-P, IP
Species reactivity	Reacts with: Human Predicted to work with: Mouse 
Immunogen	Synthetic peptide within Human KLC3 aa 350-450. The exact sequence is proprietary. Database link: Q6P597
Positive control	Jurkat, U87-MG, HepG2 and BxPC-3 cell lysates; Human liver tissue; HepG2 and Jurkat cells.
General notes	<p>This product is a recombinant monoclonal antibody, which offers several advantages including:</p> <ul style="list-style-type: none"> - High batch-to-batch consistency and reproducibility - Improved sensitivity and specificity - Long-term security of supply - Animal-free production <p>For more information see here.</p> <p>Our RabMAb[®] technology is a patented hybridoma-based technology for making rabbit monoclonal antibodies. For details on our patents, please refer to RabMAb[®] patents.</p>

Properties

Form	Liquid
Storage instructions	Shipped at 4°C. Store at +4°C short term (1-2 weeks). Upon delivery aliquot. Store at -20°C long term. Avoid freeze / thaw cycle.
Storage buffer	Preservative: 0.01% Sodium azide Constituents: 59% PBS, 40% Glycerol, 0.05% BSA
Purity	Protein A purified
Clonality	Monoclonal
Clone number	EPR11149(2)
Isotype	IgG

Applications

The Abpromise guarantee

Our **Abpromise guarantee** covers the use of ab180523 in the following tested applications.

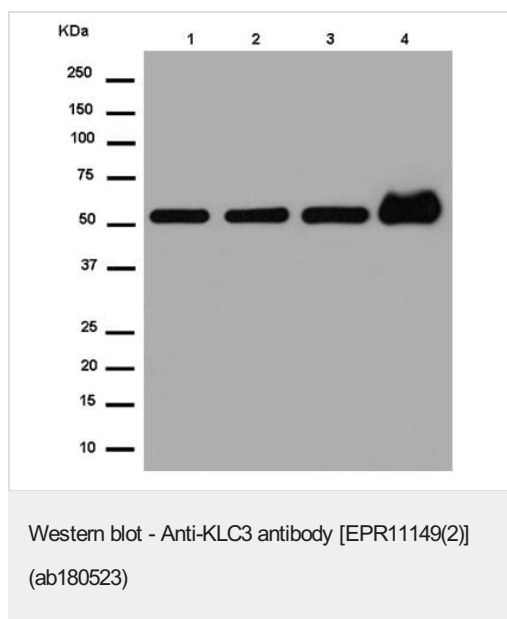
The application notes include recommended starting dilutions; optimal dilutions/concentrations should be determined by the end user.

Application	Abreviews	Notes
ICC/IF		1/1000.
Flow Cyt (Intra)		1/10. <u>ab172730</u> - Rabbit monoclonal IgG, is suitable for use as an isotype control with this antibody.
WB		1/10000 - 1/50000. Detects a band of approximately 55 kDa (predicted molecular weight: 55 kDa).
IHC-P		1/100 - 1/250. Perform heat mediated antigen retrieval with Tris/EDTA buffer pH 9.0 before commencing with IHC staining protocol.
IP		1/40.

Target

Function	Kinesin is a microtubule-associated force-producing protein that may play a role in organelle transport.
Sequence similarities	Belongs to the kinesin light chain family. Contains 5 TPR repeats.
Domain	The heptad repeat (HR) motif is sufficient for interaction with kinesin heavy (KHL) chains and ODF1. The TPR region is involved in mitochondrial binding.
Cellular localization	Cytoplasm > cytoskeleton. Elongating spermatid tail midpiece, localized in outer dense fibers (ODFs) and associates with mitochondria.

Images



All lanes : Anti-KLC3 antibody [EPR11149(2)] (ab180523) at 1/50000 dilution

Lane 1 : Jurkat cell lysate

Lane 2 : U-87 MG cell lysate

Lane 3 : HepG2 cell lysate

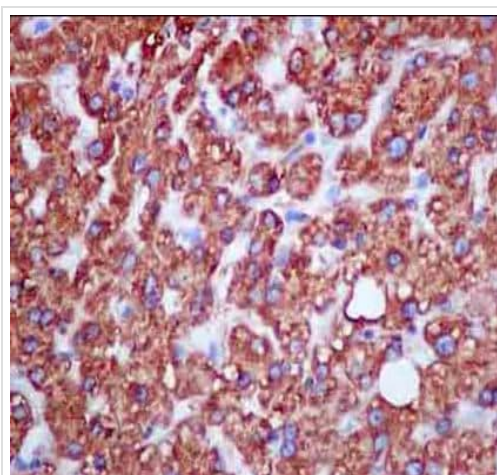
Lane 4 : BxPC-3 cell lysate

Lysates/proteins at 20 µg per lane.

Secondary

All lanes : Goat Anti-Rabbit IgG, (H+L), Peroxidase conjugated at 1/1000 dilution

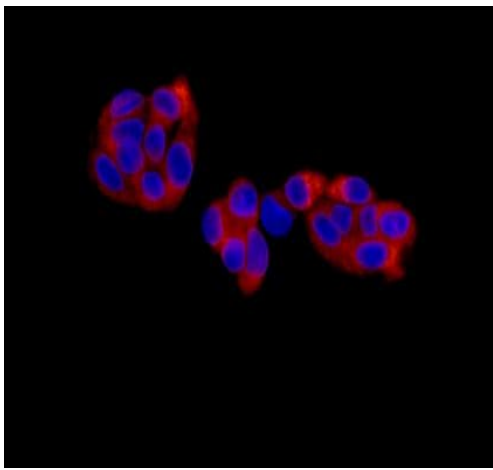
Predicted band size: 55 kDa



Immunohistochemistry (Formalin/PFA-fixed paraffin-embedded sections) - Anti-KLC3 antibody [EPR11149(2)] (ab180523)

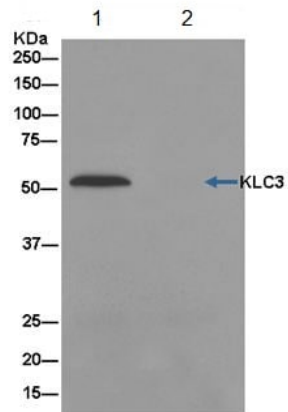
Immunohistochemical analysis of paraffin-embedded Human liver tissue labeling KLC3 with ab180523 at 1/250 dilution followed by ImmunoHistoprobe (Ready to use) HRP Polymer for Rabbit IgG secondary and counter stained with Hematoxylin.

Perform heat mediated antigen retrieval with EDTA buffer pH 9 before commencing with IHC staining protocol.



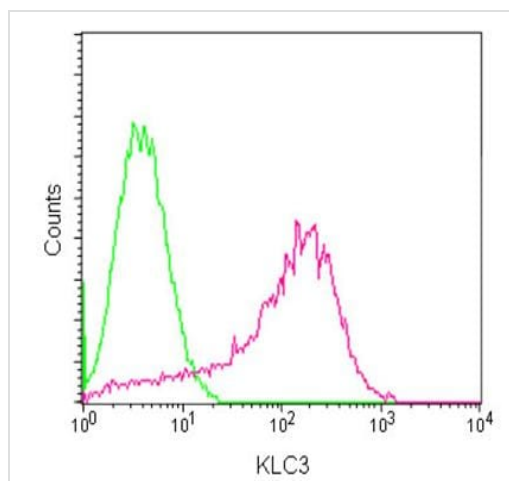
Immunocytochemistry/ Immunofluorescence - Anti-KLC3 antibody [EPR11149(2)] (ab180523)

Immunofluorescent analysis of HepG2 cells (4% paraformaldehyde-fixed) labeling KLC3 with ab180523 at 1/1000 dilution followed by Goat anti-rabbit IgG (Dylight 555) at 1/250 dilution and counterstained with DAPI.



Immunoprecipitation - Anti-KLC3 antibody [EPR11149(2)] (ab180523)

Western blot analysis of immunoprecipitation pellet from BxPC-3 cell lysate immunoprecipitated using ab180523 at 1/40 dilution (lane 1). Negative control (lane 2). Rabbit TrueBlot®:Anti-Rabbit IgG HRP at 1/1500 dilution was used as secondary.



Flow Cytometry (Intracellular) - Anti-KLC3 antibody
[EPR11149(2)] (ab180523)

Intracellular flow cytometric analysis of Jurkat cells (2% paraformaldehyde-fixed) labeling KLC3 with ab180523 at 1/10 dilution. Goat anti-rabbit IgG (FITC) at 1/75 dilution was used as the secondary antibody. Rabbit monoclonal IgG was used as the isotype control.

Why choose a recombinant antibody?



Research with confidence
Consistent and reproducible results



Long-term and scalable supply
Recombinant technology



Success from the first experiment
Confirmed specificity



Ethical standards compliant
Animal-free production

Anti-KLC3 antibody [EPR11149(2)] (ab180523)

Please note: All products are "FOR RESEARCH USE ONLY. NOT FOR USE IN DIAGNOSTIC PROCEDURES"

Our Abpromise to you: Quality guaranteed and expert technical support

- Replacement or refund for products not performing as stated on the datasheet
- Valid for 12 months from date of delivery
- Response to your inquiry within 24 hours
- We provide support in Chinese, English, French, German, Japanese and Spanish
- Extensive multi-media technical resources to help you
- We investigate all quality concerns to ensure our products perform to the highest standards

If the product does not perform as described on this datasheet, we will offer a refund or replacement. For full details of the Abpromise, please visit <https://www.abcam.com/abpromise> or contact our technical team.

Terms and conditions

- Guarantee only valid for products bought direct from Abcam or one of our authorized distributors