




Product datasheet

Anti-KLF15 antibody ab2647

★★★★★ [1 Abreviews](#) [20 References](#) [1 Image](#)

Overview

Product name	Anti-KLF15 antibody
Description	Goat polyclonal to KLF15
Host species	Goat
Tested applications	Suitable for: IP, WB, IHC-P
Species reactivity	Reacts with: Human Predicted to work with: Mouse, Rat, Pig 
Immunogen	Synthetic peptide within Human KLF15 aa 1-100 (N terminal) (Cysteine residue). The exact immunogen sequence used to generate this antibody is proprietary information. If additional detail on the immunogen is needed to determine the suitability of the antibody for your needs, please <u>contact</u> our Scientific Support team to discuss your requirements.  Run BLAST with  Run BLAST with
General notes	Principal Names – KLF15; Kruppel-like factor 15; KKLF; KKLF protein; kidney-enriched Kruppel-like factor Official Gene Symbol - KLF15 GenBank Accession Number – NP_054798 LocusLink ID - 28999 (human); 66277 (mouse); 85497 (rat)

We no longer guarantee this product for mouse because of recent complaints. The immunogen however shares 92% sequence homology with mouse so we still predict the antibody will cross-react. We will welcome any feedback from customers.

The Life Science industry has been in the grips of a reproducibility crisis for a number of years. Abcam is leading the way in addressing this with our range of recombinant monoclonal antibodies and knockout edited cell lines for gold-standard validation. Please check that this product meets your needs before purchasing.

If you have any questions, special requirements or concerns, please send us an inquiry and/or contact our Support team ahead of purchase. Recommended alternatives for this product can be found below, along with publications, customer reviews and Q&As

Properties

Form	Liquid
Storage instructions	Shipped at 4°C. Upon delivery aliquot and store at -20°C or -80°C. Avoid repeated freeze / thaw cycles.

Storage buffer	pH: 7.30 Preservative: 0.02% Sodium azide Constituents: Tris buffered saline, 0.5% BSA
Purity	Immunogen affinity purified
Purification notes	Purified from goat serum by ammonium sulphate precipitation followed by antigen affinity chromatography using the immunizing peptide.
Clonality	Polyclonal
Isotype	IgG

Applications

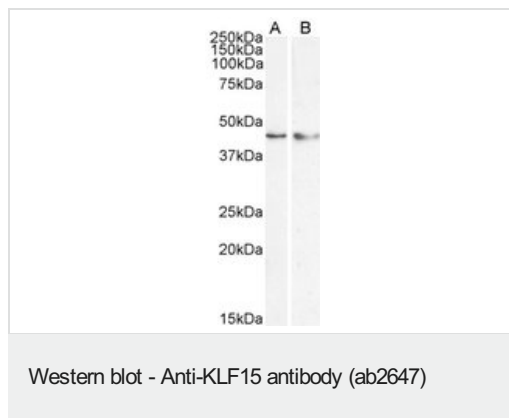
The Abpromise guarantee Our **Abpromise guarantee** covers the use of ab2647 in the following tested applications. The application notes include recommended starting dilutions; optimal dilutions/concentrations should be determined by the end user.

Application	Abreviews	Notes
IP		Use at an assay dependent concentration. PubMed: 24407292
WB		Use a concentration of 0.5 - 1.5 µg/ml. Detects a band of approximately 45 kDa (predicted molecular weight: 44 kDa). A 1 hour primary incubation is recommended for this product. Approx 48kDa band observed in lysates of hepatoblastoma cell line HepG2 (calculated MW of 44.0kDa according to NP_054798.1). Older batches detected a band of approximately 65 kDa in Human Liver lysate(predicted molecular weight: 46
IHC-P		Use at an assay dependent concentration. PubMed: 26378916

Target

Function	Transcriptional activator. Binds to the GA element of the CLCNKA promoter.
Tissue specificity	Highly expressed in liver, followed by heart, skeletal muscle, and kidney. Not expressed in bone marrow or lymphoid tissues.
Sequence similarities	Belongs to the Sp1 C2H2-type zinc-finger protein family. Contains 3 C2H2-type zinc fingers.
Cellular localization	Nucleus.

Images



Lane 1 : Anti-KLF15 antibody (ab2647) at 1 µg/ml

Lane 2 : Anti-KLF15 antibody (ab2647) at 0.5 µg/ml

Lane 1 : HepG2 nuclear lysate

Lane 2 : HeLa cell lysate

Lysates/proteins at 35 µg per lane.

Predicted band size: 44 kDa

Please note: All products are "FOR RESEARCH USE ONLY. NOT FOR USE IN DIAGNOSTIC PROCEDURES"

Our Abpromise to you: Quality guaranteed and expert technical support

- Replacement or refund for products not performing as stated on the datasheet
- Valid for 12 months from date of delivery
- Response to your inquiry within 24 hours
- We provide support in Chinese, English, French, German, Japanese and Spanish
- Extensive multi-media technical resources to help you
- We investigate all quality concerns to ensure our products perform to the highest standards

If the product does not perform as described on this datasheet, we will offer a refund or replacement. For full details of the Abpromise, please visit <https://www.abcam.com/abpromise> or contact our technical team.

Terms and conditions

- Guarantee only valid for products bought direct from Abcam or one of our authorized distributors