

Product datasheet

Anti-KLF4 antibody ab106629

★★★★★ [4 Abreviews](#) [39 References](#) [2 Images](#)

Overview

Product name	Anti-KLF4 antibody
Description	Rabbit polyclonal to KLF4
Host species	Rabbit
Specificity	ab106629 will detect all three known isoforms. It does not cross-react with other KLF members.
Tested applications	Suitable for: IHC-P, WB
Species reactivity	Reacts with: Human
Immunogen	Synthetic peptide corresponding to Human KLF4 (C terminal). 20 amino acid synthetic peptide located near the c-terminus. Database link: O43474
General notes	<p>For information on sample preparation for western blot, please refer here.</p> <p>The Life Science industry has been in the grips of a reproducibility crisis for a number of years. Abcam is leading the way in addressing this with our range of recombinant monoclonal antibodies and knockout edited cell lines for gold-standard validation. Please check that this product meets your needs before purchasing.</p> <p>If you have any questions, special requirements or concerns, please send us an inquiry and/or contact our Support team ahead of purchase. Recommended alternatives for this product can be found below, along with publications, customer reviews and Q&As</p>

Properties

Form	Liquid
Storage instructions	Shipped at 4°C. Store at 4°C (stable for up to 12 months).
Storage buffer	pH: 7.2 Preservative: 0.02% Sodium azide Constituent: PBS
Purity	Immunogen affinity purified
Purification notes	ab106629 is purified by affinity chromatography via a peptide column.
Clonality	Polyclonal
Isotype	IgG

Applications

The Abpromise guarantee

Our **Abpromise guarantee** covers the use of ab106629 in the following tested applications.

The application notes include recommended starting dilutions; optimal dilutions/concentrations should be determined by the end user.

Application	Abreviews	Notes
IHC-P		Use a concentration of 5 µg/ml.
WB	★★★★★ (1)	Use a concentration of 1 - 2 µg/ml. Predicted molecular weight: 55 kDa.

Target

Function

Transcription factor; can act both as activator and as repressor. Binds the 5'-CACCC-3' core sequence. Binds to the promoter region of its own gene and can activate its own transcription. Regulates the expression of key transcription factors during embryonic development. Plays an important role in maintaining embryonic stem cells, and in preventing their differentiation. Required for establishing the barrier function of the skin and for postnatal maturation and maintenance of the ocular surface. Involved in the differentiation of epithelial cells and may also function in skeletal and kidney development. Contributes to the down-regulation of p53/TP53 transcription.

Sequence similarities

Belongs to the krueppel C2H2-type zinc-finger protein family.
Contains 3 C2H2-type zinc fingers.

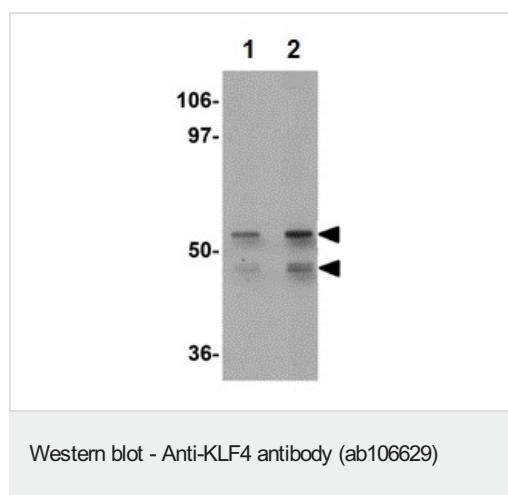
Domain

the 9aaTAD motif is a transactivation domain present in a large number of yeast and animal transcription factors.

Cellular localization

Nucleus.

Images



Lane 1 : Anti-KLF4 antibody (ab106629) at 1 µg/ml

Lane 2 : Anti-KLF4 antibody (ab106629) at 2 µg/ml

All lanes : Human liver tissue lysate (7.5 µL (2 mg/mL) per well)

Lysates/proteins at 15 µg per lane.

Secondary

All lanes : anti-rabbit IgG-HRP conjugated secondary at 1/10000 dilution

Developed using the ECL technique.

Predicted band size: 55 kDa

Exposure time: 30 seconds

Run in running buffer at 130V for 2hours(or until the dye front is close to the bottom);

Transfer the proteins to the membrane at 250mA in transfer buffer for 2hours.

After transfer, wash membrane in 1xTBST.

Incubate the membrane with blocking buffer overnight at 4°C with gentle agitation.

Dilute ab106629 to recommended dilution in 10mL of blocking buffer. Incubate membrane with ab106629 overnight at 4°C. Wash 3 times x 10 minutes in washing buffer with gentle agitation.

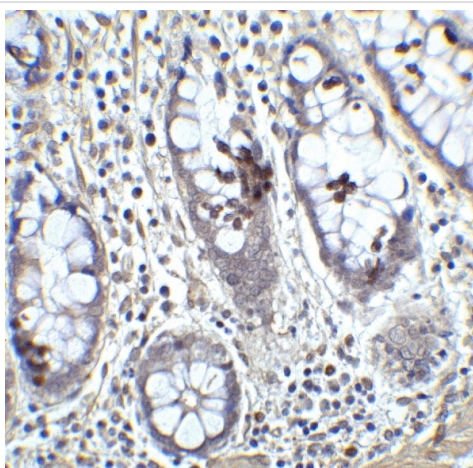
Dilute 1µL anti-rabbit IgG-HRP conjugated secondary in 10mL of blocking buffer to make a 1:10,000 dilution (can vary from 1:2,000 to 1:10,000). Incubate membrane for 1 hour at room temperature. Wash 3 times x 10 minutes in washing buffer with gentle agitation.

Running Buffer: 25mM Tris, 192 mM Glycine, 0.1% SDS.

Transfer Buffer: 20mM Tris, 150mM Glycine, 20% Methanol, 0.038% SDS.

Blocking Buffer: 5% non-fat dry milk, TBS.

Wash Buffer (TBST): 125 mM NaCl, 25mM Tris pH 8.0, 0.1% Tween-20.



Immunohistochemistry (Formalin/PFA-fixed paraffin-embedded sections) - Anti-KLF4 antibody (ab106629)

Immunohistochemical analysis of paraffin-embedded human colon tissue labeling KLF4 with ab106629 at 5 µg/mL. Antigen Retrieval: Use Citrate buffer antigen retrieval using a microwave. Endogenous peroxide blocking with 3% H₂O₂. Blocking with 5% BSA at room temperature for 30 minutes. ab106629 incubation at 4°C overnight. Secondary antibody incubation at room temperature for 30 minutes. Washing 3 times for 5 minutes using phosphate buffered saline. Detection using DAB.

Our Abpromise to you: Quality guaranteed and expert technical support

- Replacement or refund for products not performing as stated on the datasheet
- Valid for 12 months from date of delivery
- Response to your inquiry within 24 hours

- We provide support in Chinese, English, French, German, Japanese and Spanish
- Extensive multi-media technical resources to help you
- We investigate all quality concerns to ensure our products perform to the highest standards

If the product does not perform as described on this datasheet, we will offer a refund or replacement. For full details of the Abpromise, please visit <https://www.abcam.com/abpromise> or contact our technical team.

Terms and conditions

- Guarantee only valid for products bought direct from Abcam or one of our authorized distributors