

Anti-KLF4 antibody ab216875

[1 References](#) [2 Images](#)

Overview

Product name	Anti-KLF4 antibody
Description	Rabbit polyclonal to KLF4
Host species	Rabbit
Tested applications	Suitable for: WB, ICC/IF
Species reactivity	Reacts with: Mouse, Human
Immunogen	Synthetic peptide. This information is proprietary to Abcam and/or its suppliers.
Positive control	WB: U-87, C2C12, THP-1, J774A.1, PC-3, HT-29, A549 and HeLa whole cell lysates. ICC/IF: PC-3 cells.
General notes	<p>The Life Science industry has been in the grips of a reproducibility crisis for a number of years. Abcam is leading the way in addressing this with our range of recombinant monoclonal antibodies and knockout edited cell lines for gold-standard validation. Please check that this product meets your needs before purchasing.</p> <p>If you have any questions, special requirements or concerns, please send us an inquiry and/or contact our Support team ahead of purchase. Recommended alternatives for this product can be found below, along with publications, customer reviews and Q&As</p>

Properties

Form	Liquid
Storage instructions	Shipped at 4°C. Store at +4°C short term (1-2 weeks). Upon delivery aliquot. Store at -20°C long term. Avoid freeze / thaw cycle.
Storage buffer	Preservative: 0.01% Sodium azide Constituent: PBS
Purity	Immunogen affinity purified
Clonality	Polyclonal
Isotype	IgG

Applications

The Abpromise guarantee Our **Abpromise guarantee** covers the use of ab216875 in the following tested applications.

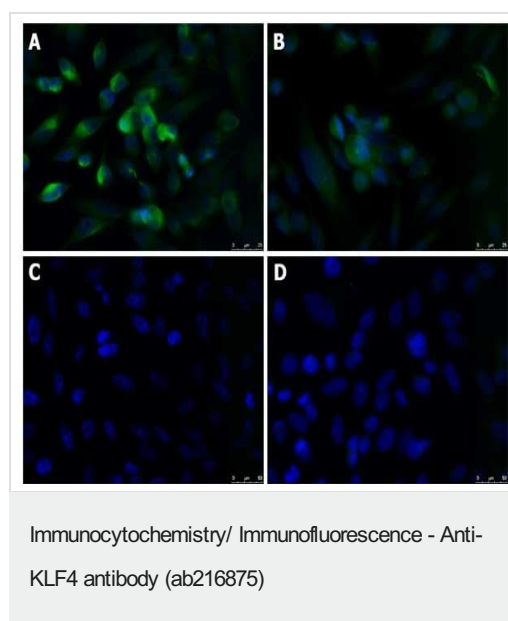
The application notes include recommended starting dilutions; optimal dilutions/concentrations should be determined by the end user.

Application	Abreviews	Notes
WB		1/1000. Detects a band of approximately 55 kDa (predicted molecular weight: 54 kDa).
ICC/IF		Use a concentration of 10 µg/ml.

Target

Function	Transcription factor; can act both as activator and as repressor. Binds the 5'-CACCC-3' core sequence. Binds to the promoter region of its own gene and can activate its own transcription. Regulates the expression of key transcription factors during embryonic development. Plays an important role in maintaining embryonic stem cells, and in preventing their differentiation. Required for establishing the barrier function of the skin and for postnatal maturation and maintenance of the ocular surface. Involved in the differentiation of epithelial cells and may also function in skeletal and kidney development. Contributes to the down-regulation of p53/TP53 transcription.
Sequence similarities	Belongs to the krueppel C2H2-type zinc-finger protein family. Contains 3 C2H2-type zinc fingers.
Domain	the 9aaTAD motif is a transactivation domain present in a large number of yeast and animal transcription factors.
Cellular localization	Nucleus.

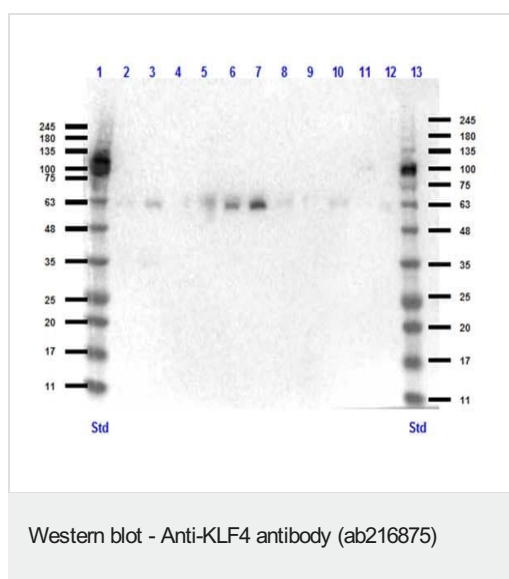
Images



Immunofluorescent analysis of 0.5% PFA-fixed (A and C) and 0.5% methanol-fixed (B and D) PC-3 (human prostate adenocarcinoma cell line) cells labeling KLF4 with ab216875 at 10 µg/ml (green).

The nuclear counter stain is DAPI (blue).

Secondary antibody only control: C and D.



All lanes : Anti-KLF4 antibody (ab216875) at 1/1000 dilution

Lanes 1 & 13 : MW ladder (opal pre-stained)

Lane 2 : U-87 whole cell lysate

Lane 3 : C2C12 whole cell lysate

Lane 4 : NIH/3T3 whole cell lysate

Lane 5 : THP-1 whole cell lysate

Lane 6 : J774A.1 whole cell lysate

Lane 7 : PC-3 whole cell lysate

Lane 8 : HT-29 whole cell lysate

Lane 9 : Mouse colon lysate

Lane 10 : A549 whole cell lysate

Lane 11 : MOLT-4 whole cell lysate

Lane 12 : HeLa whole cell lysate

Secondary

All lanes : Rabbit secondary HRP antibody at 1/70000 dilution

Developed using the ECL technique.

Predicted band size: 54 kDa

Observed band size: 55 kDa

Exposure time: 30 seconds

Blocking buffer: Blotto 5%.

Dilution buffer: 1X PBS, 0.01% azide.

Please note: All products are "FOR RESEARCH USE ONLY. NOT FOR USE IN DIAGNOSTIC PROCEDURES"

Our Abpromise to you: Quality guaranteed and expert technical support

- Replacement or refund for products not performing as stated on the datasheet
- Valid for 12 months from date of delivery
- Response to your inquiry within 24 hours
- We provide support in Chinese, English, French, German, Japanese and Spanish
- Extensive multi-media technical resources to help you

- We investigate all quality concerns to ensure our products perform to the highest standards

If the product does not perform as described on this datasheet, we will offer a refund or replacement. For full details of the Abpromise, please visit <https://www.abcam.com/abpromise> or contact our technical team.

Terms and conditions

- Guarantee only valid for products bought direct from Abcam or one of our authorized distributors