


Product datasheet

Anti-KLF5 antibody ab137676

★★★★★ [5 Abreviews](#) [37 References](#) [6 Images](#)

Overview

Product name	Anti-KLF5 antibody
Description	Rabbit polyclonal to KLF5
Host species	Rabbit
Tested applications	Suitable for: IHC-P, WB, ICC/IF
Species reactivity	Reacts with: Mouse, Human Predicted to work with: Cow, Pig 
Immunogen	Recombinant fragment corresponding to Human KLF5 aa 69-346. Database link: Q13887
General notes	<p>The Life Science industry has been in the grips of a reproducibility crisis for a number of years. Abcam is leading the way in addressing this with our range of recombinant monoclonal antibodies and knockout edited cell lines for gold-standard validation. Please check that this product meets your needs before purchasing.</p> <p>If you have any questions, special requirements or concerns, please send us an inquiry and/or contact our Support team ahead of purchase. Recommended alternatives for this product can be found below, along with publications, customer reviews and Q&As</p>

Properties

Form	Liquid
Storage instructions	Shipped at 4°C. Store at +4°C short term (1-2 weeks). Upon delivery aliquot. Store at -20°C or -80°C. Avoid freeze / thaw cycle.
Storage buffer	pH: 7.00 Preservative: 0.025% Proclin 300 Constituents: 78% PBS, 1% BSA, 20% Glycerol (glycerin, glycerine)
Purity	Immunogen affinity purified
Clonality	Polyclonal
Isotype	IgG

Applications

The Abpromise guarantee

Our **Abpromise guarantee** covers the use of ab137676 in the following tested applications.

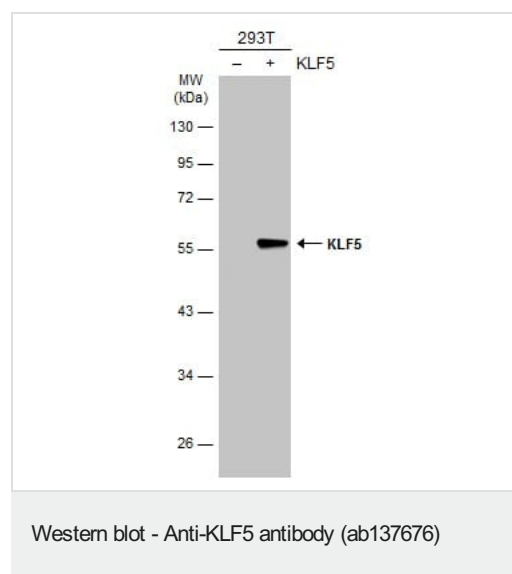
The application notes include recommended starting dilutions; optimal dilutions/concentrations should be determined by the end user.

Application	Abreviews	Notes
IHC-P		1/100 - 1/1000.
WB	★★★★★ (2)	1/500 - 1/3000. Predicted molecular weight: 51 kDa.
ICC/IF	★★★★★ (1)	1/100 - 1/1000.

Target

Function	Transcription factor that binds to GC box promoter elements. Activates the transcription of these genes.
Tissue specificity	Expressed only in testis and placenta.
Sequence similarities	Belongs to the krueppel C2H2-type zinc-finger protein family. Contains 3 C2H2-type zinc fingers.
Post-translational modifications	Ubiquitinated. Polyubiquitination involves WWP1 and leads to proteasomal degradation of this protein.
Cellular localization	Nucleus.
Form	KLF5 (also known as basic transcription element-binding protein 2, BTEB2, and intestine enriched krüppel-like factor, IKLF), appears to play a central role in the regulation of intestinal epithelial renewal in both the small intestine and colon. KLF5 also regulates adipocyte differentiation.

Images



All lanes : Anti-KLF5 antibody (ab137676) at 1/5000 dilution

Lane 1 : Non-transfected 293T whole cell extract

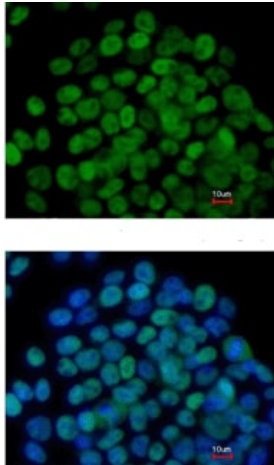
Lane 2 : Transfected 293T whole cell extract

Lysates/proteins at 30 µg per lane.

Secondary

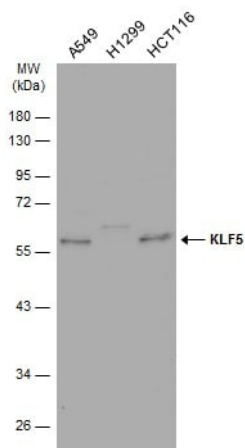
All lanes : HRP-conjugated anti-rabbit IgG

Predicted band size: 51 kDa



Immunocytochemistry/ Immunofluorescence - Anti-KLF5 antibody (ab137676)

Immunofluorescence analysis of paraformaldehyde-fixed Mouse ESC D3 cells labelling KLF5 using ab137676 at 1/200 dilution. Lower image shows cells co-stained with Hoechst 33342.



Western blot - Anti-KLF5 antibody (ab137676)

All lanes : Anti-KLF5 antibody (ab137676) at 1/1000 dilution

Lane 1 : A549 whole cell lysate

Lane 2 : H1299 whole cell lysate

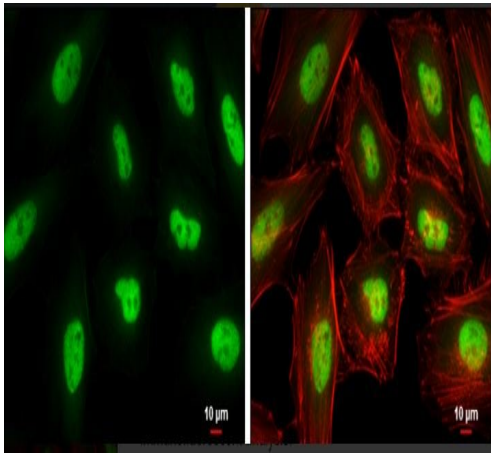
Lane 3 : HCT116 whole cell lysate

Lysates/proteins at 30 µg per lane.

Secondary

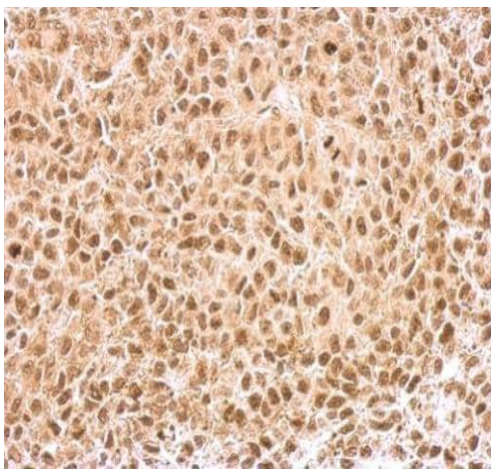
All lanes : HRP-conjugated anti-rabbit IgG

Predicted band size: 51 kDa



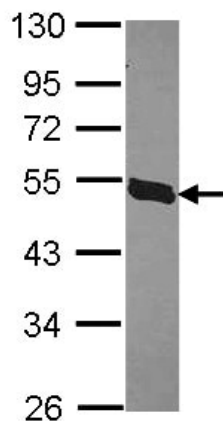
Immunocytochemistry/ Immunofluorescence - Anti-KLF5 antibody (ab137676)

HeLa cells stained for KLF5 (green) using ab137676 at 1/500 dilution in ICC/IF.



Immunohistochemistry (Formalin/PFA-fixed paraffin-embedded sections) - Anti-KLF5 antibody (ab137676)

ab137676 staining KLF5 in nucleus on HeLa xenograft by Immunohistochemistry (IHC-P - paraformaldehyde-fixed, paraffin-embedded sections). Samples were incubated with primary antibody at a dilution of 1/500



Western blot - Anti-KLF5 antibody (ab137676)

Anti-KLF5 antibody (ab137676) at 1/1000 dilution + H1299 whole cell lysate at 30 μg

Predicted band size: 51 kDa

10% SDS PAGE

Please note: All products are "FOR RESEARCH USE ONLY. NOT FOR USE IN DIAGNOSTIC PROCEDURES"

Our Abpromise to you: Quality guaranteed and expert technical support

- Replacement or refund for products not performing as stated on the datasheet
- Valid for 12 months from date of delivery
- Response to your inquiry within 24 hours

- We provide support in Chinese, English, French, German, Japanese and Spanish
- Extensive multi-media technical resources to help you
- We investigate all quality concerns to ensure our products perform to the highest standards

If the product does not perform as described on this datasheet, we will offer a refund or replacement. For full details of the Abpromise, please visit <https://www.abcam.com/abpromise> or contact our technical team.

Terms and conditions

- Guarantee only valid for products bought direct from Abcam or one of our authorized distributors