

## Product datasheet

### Anti-KLLN antibody [EPR16934] ab197892

Recombinant **RabMAb**

[3 References](#) [4 Images](#)

#### Overview

|                            |   |
|----------------------------|---|
| <b>Product name</b>        | Anti-KLLN antibody [EPR16934]   |
| <b>Description</b>         | Rabbit monoclonal [EPR16934] to KLLN  |
| <b>Host species</b>        | Rabbit  |
| <b>Tested applications</b> | <b>Suitable for:</b> WB   |
| <b>Species reactivity</b>  | <b>Reacts with:</b> Mouse, Rat, Human   |
| <b>Immunogen</b>           | Synthetic peptide. This information is proprietary to Abcam and/or its suppliers.   |
| <b>Positive control</b>    | WB: HeLa, MCF7, HCT116, Raw264.7, NIH3T3, PC12, C6 whole cell lysates. Human fetal brain and kidney tissue lysates.   |
| <b>General notes</b>       | <p>This product is a recombinant monoclonal antibody, which offers several advantages including:</p> <ul style="list-style-type: none"> <li>- High batch-to-batch consistency and reproducibility</li> <li>- Improved sensitivity and specificity</li> <li>- Long-term security of supply</li> <li>- Animal-free production</li> </ul> <p>For more information <a href="#">see here</a>.</p> <p>Our RabMAb<sup>®</sup> technology is a patented hybridoma-based technology for making rabbit monoclonal antibodies. For details on our patents, please refer to <a href="#">RabMAb<sup>®</sup> patents</a>.</p> |

#### Properties

|                             |  |
|-----------------------------|--|
| <b>Form</b>                 | Liquid   |
| <b>Storage instructions</b> | Shipped at 4°C. Store at +4°C short term (1-2 weeks). Upon delivery aliquot. Store at -20°C long term. Avoid freeze / thaw cycle.  |
| <b>Storage buffer</b>       | <p>pH: 7.2</p> <p>Preservative: 0.01% Sodium azide</p> <p>Constituents: 40% Glycerol (glycerin, glycerine), 0.05% BSA, 59% PBS</p> |
| <b>Purity</b>               | Protein A purified   |
| <b>Clonality</b>            | Monoclonal   |
| <b>Clone number</b>         | EPR16934   |
| <b>Isotype</b>              | IgG  |

## Applications

### The Abpromise guarantee

Our **Abpromise guarantee** covers the use of ab197892 in the following tested applications.

The application notes include recommended starting dilutions; optimal dilutions/concentrations should be determined by the end user.

| Application | Abreviews | Notes  |
|-------------|-----------|--|
| WB          |           | 1/1000. Detects a band of approximately 20 kDa (predicted molecular weight: 20 kDa). |

## Target

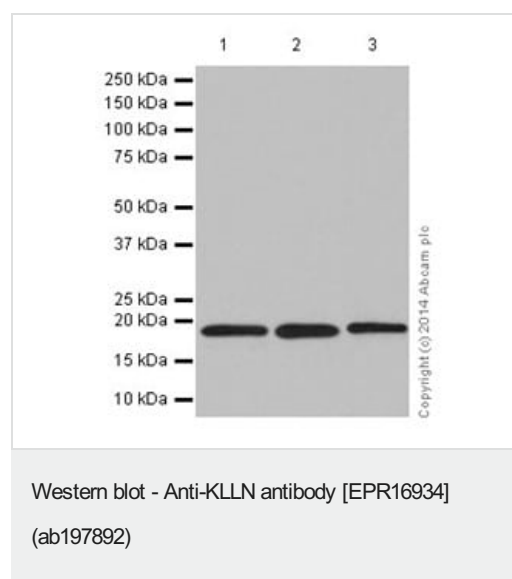
### Function

DNA-binding protein involved in S phase checkpoint control-coupled apoptosis by mediating p53/TP53-induced apoptosis. Has the ability to inhibit DNA synthesis and S phase arrest coupled to apoptosis. Has affinity to both double- and single-stranded DNA.

### Cellular localization

Nucleus.

## Images



**All lanes** : Anti-KLLN antibody [EPR16934] (ab197892) at 1/2000 dilution

**Lane 1** : HeLa (Human epithelial cells from cervix adenocarcinoma) whole cell lysate

**Lane 2** : MCF7 (Human breast adenocarcinoma cell line) whole cell lysate

**Lane 3** : HCT 116 (Human colorectal carcinoma cell line) whole cell lysate

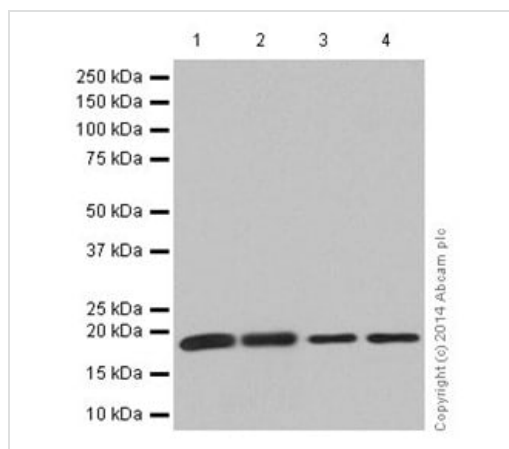
Lysates/proteins at 20 µg per lane.

### Secondary

**All lanes** : Goat Anti-Rabbit IgG, (H+L), Peroxidase conjugated at 1/1000 dilution

**Predicted band size:** 20 kDa

**Exposure time:** 3 minutes



Western blot - Anti-KLLN antibody [EPR16934]  
(ab197892)

**All lanes :** Anti-KLLN antibody [EPR16934] (ab197892) at 1/1000 dilution

**Lane 1 :** C6 (Rat glial tumor cells) whole cell lysate

**Lane 2 :** Raw264.7 (Mouse macrophage cells transformed with Abelson murine leukemia virus) whole cell lysate

**Lane 3 :** PC12 (Rat adrenal gland pheochromocytoma) whole cell lysate

**Lane 4 :** NIH/3T3 (Mouse embryo fibroblast cells) whole cell lysate

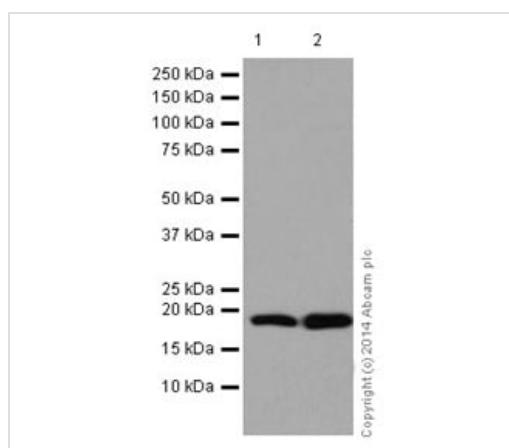
Lysates/proteins at 10 µg per lane.

### Secondary

**All lanes :** Goat Anti-Rabbit IgG, (H+L), Peroxidase conjugated at 1/1000 dilution

**Predicted band size:** 20 kDa

**Exposure time:** 3 minutes



Western blot - Anti-KLLN antibody [EPR16934]  
(ab197892)

**All lanes :** Anti-KLLN antibody [EPR16934] (ab197892) at 1/1000 dilution

**Lane 1 :** Human fetal brain lysate

**Lane 2 :** Human fetal kidney lysate

Lysates/proteins at 10 µg per lane.

### Secondary

**All lanes :** Anti-Rabbit IgG (HRP), specific to the non-reduced form of IgG at 1/1000 dilution

**Predicted band size:** 20 kDa

**Exposure time:** 3 minutes

Blocking/dilution buffer: 5% NFDM/TBST

### Why choose a recombinant antibody?



**Research with confidence**  
Consistent and reproducible results



**Long-term and scalable supply**  
Recombinant technology



**Success from the first experiment**  
Confirmed specificity



**Ethical standards compliant**  
Animal-free production

Anti-KLLN antibody [EPR16934] (ab197892)

**Please note:** All products are "FOR RESEARCH USE ONLY. NOT FOR USE IN DIAGNOSTIC PROCEDURES"

### Our Abpromise to you: Quality guaranteed and expert technical support

---

- Replacement or refund for products not performing as stated on the datasheet
- Valid for 12 months from date of delivery
- Response to your inquiry within 24 hours
- We provide support in Chinese, English, French, German, Japanese and Spanish
- Extensive multi-media technical resources to help you
- We investigate all quality concerns to ensure our products perform to the highest standards

If the product does not perform as described on this datasheet, we will offer a refund or replacement. For full details of the Abpromise, please visit <https://www.abcam.com/abpromise> or contact our technical team.

### Terms and conditions

---

- Guarantee only valid for products bought direct from Abcam or one of our authorized distributors