


Product datasheet

Anti-KMT2B / MLL4 antibody ab104444

★★★★☆ [3 Abreviews](#) [3 References](#) [2 Images](#)

Overview

Product name	Anti-KMT2B / MLL4 antibody
Description	Goat polyclonal to KMT2B / MLL4
Host species	Goat
Tested applications	Suitable for: ELISA, IHC-P
Species reactivity	Reacts with: Human Predicted to work with: Mouse, Rat, Cow, Pig, Monkey, Zebrafish, Gorilla, Common marmoset 

Immunogen	Synthetic peptide corresponding to Human KMT2B/ MLL4 aa 2703-2715 (C terminal). Entrez gene ID: 9757 Sequence: CNCGAKRCRRFLN
------------------	--

Database link: [Q9UMN6](#)

 [Run BLAST with](#)

 [Run BLAST with](#)

Positive control	IHC-P: Human brain cortex and testis tissue.
-------------------------	--

General notes	<p>The Life Science industry has been in the grips of a reproducibility crisis for a number of years. Abcam is leading the way in addressing this with our range of recombinant monoclonal antibodies and knockout edited cell lines for gold-standard validation. Please check that this product meets your needs before purchasing.</p> <p>If you have any questions, special requirements or concerns, please send us an inquiry and/or contact our Support team ahead of purchase. Recommended alternatives for this product can be found below, along with publications, customer reviews and Q&As</p>
----------------------	---

Properties

Form	Liquid
Storage instructions	Shipped at 4°C. Store at +4°C short term (1-2 weeks). Upon delivery aliquot. Store at -20°C long term.
Storage buffer	pH: 7.30 Preservative: 0.02% Sodium azide Constituents: Tris buffered saline, 0.5% BSA

Purity	Protein G purified
Purification notes	Immunoaffinity purified
Clonality	Polyclonal
Isotype	IgG

Applications

The Abpromise guarantee Our **Abpromise guarantee** covers the use of ab104444 in the following tested applications.

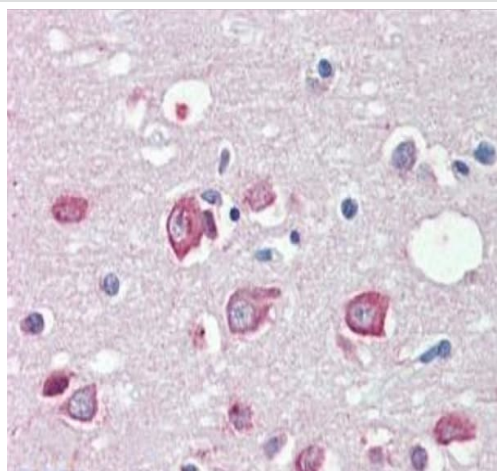
The application notes include recommended starting dilutions; optimal dilutions/concentrations should be determined by the end user.

Application	Abreviews	Notes
ELISA		Use at an assay dependent concentration.
IHC-P		Use a concentration of 5 µg/ml. Perform heat mediated antigen retrieval with citrate buffer pH 6 before commencing with IHC staining protocol.

Target

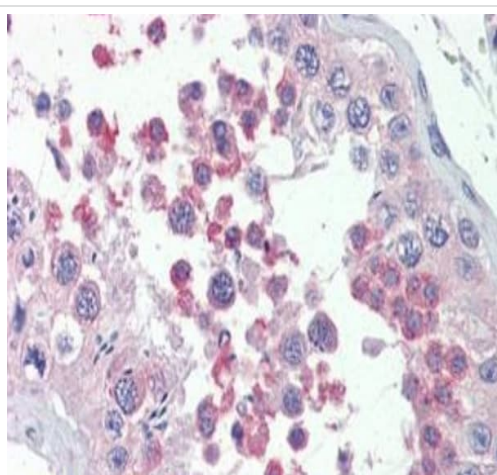
Function	Histone methyltransferase. Methylates 'Lys-4' of histone H3. H3 'Lys-4' methylation represents a specific tag for epigenetic transcriptional activation. Plays a central role in beta-globin locus transcription regulation by being recruited by NFE2. Plays an important role in controlling bulk H3K4me during oocyte growth and preimplantation development. Required during the transcriptionally active period of oocyte growth for the establishment and/or maintenance of bulk H3K4 trimethylation (H3K4me3), global transcriptional silencing that preceeds resumption of meiosis, oocyte survival and normal zygotic genome activation.
Tissue specificity	Widely expressed. Highest levels in testis. Also found in brain, bone marrow, heart, muscle, kidney, placenta, spleen, thymus, prostate, ovary, intestine, colon, peripheral blood lymphocytes and pancreas. Often amplified in pancreatic carcinomas.
Sequence similarities	Belongs to the class V-like SAM-binding methyltransferase superfamily. Histone-lysine methyltransferase family. TRX/MLL subfamily. Contains 3 A.T hook DNA-binding domains. Contains 1 CXXC-type zinc finger. Contains 1 FYR C-terminal domain. Contains 1 FYR N-terminal domain. Contains 3 PHD-type zinc fingers. Contains 1 post-SET domain. Contains 1 SET domain.
Cellular localization	Nucleus.

Images



Immunohistochemistry (Formalin/PFA-fixed paraffin-embedded sections) - Anti-KMT2B / MLL4 antibody (ab104444)

ab104444, at 5 µg/ml, staining KMT2B / MLL4 in formalin-fixed, paraffin-embedded human brain cortex tissue by Immunohistochemistry. A biotinylated anti-goat IgG secondary antibody, alkaline phosphatase-streptavidin and chromogen was used as the secondary antibody.



Immunohistochemistry (Formalin/PFA-fixed paraffin-embedded sections) - Anti-KMT2B / MLL4 antibody (ab104444)

ab104444, at 5 µg/ml, staining KMT2B / MLL4 in formalin-fixed, paraffin-embedded human testis tissue by Immunohistochemistry. A biotinylated anti-goat IgG secondary antibody, alkaline phosphatase-streptavidin and chromogen was used as the secondary antibody.

Please note: All products are "FOR RESEARCH USE ONLY. NOT FOR USE IN DIAGNOSTIC PROCEDURES"

Our Abpromise to you: Quality guaranteed and expert technical support

- Replacement or refund for products not performing as stated on the datasheet
- Valid for 12 months from date of delivery
- Response to your inquiry within 24 hours
- We provide support in Chinese, English, French, German, Japanese and Spanish
- Extensive multi-media technical resources to help you

- We investigate all quality concerns to ensure our products perform to the highest standards

If the product does not perform as described on this datasheet, we will offer a refund or replacement. For full details of the Abpromise, please visit <https://www.abcam.com/abpromise> or contact our technical team.

Terms and conditions

- Guarantee only valid for products bought direct from Abcam or one of our authorized distributors