



Anti-KMT3B / NSD1 antibody ab226247

[1 References](#) [1 Image](#)

Overview

| | |
|----------------------------|---|
| Product name | Anti-KMT3B / NSD1 antibody |
| Description | Rabbit polyclonal to KMT3B / NSD1 |
| Host species | Rabbit |
| Tested applications | Suitable for: ICC/IF |
| Species reactivity | Reacts with: Human |
| Immunogen | Recombinant fragment corresponding to Human KMT3B/ NSD1 aa 1100-1200. Database link: Q96L73 |
| |  Run BLAST with  Run BLAST with |
| Positive control | ICC/IF: HEK-293 cells. |
| General notes | <p>The Life Science industry has been in the grips of a reproducibility crisis for a number of years. Abcam is leading the way in addressing this with our range of recombinant monoclonal antibodies and knockout edited cell lines for gold-standard validation. Please check that this product meets your needs before purchasing.</p> <p>If you have any questions, special requirements or concerns, please send us an inquiry and/or contact our Support team ahead of purchase. Recommended alternatives for this product can be found below, along with publications, customer reviews and Q&As</p> |

Properties

| | |
|-----------------------------|---|
| Form | Liquid |
| Storage instructions | Shipped at 4°C. Store at +4°C short term (1-2 weeks). Upon delivery aliquot. Store at -20°C long term. Avoid freeze / thaw cycle. |
| Storage buffer | pH: 7.20 Preservative: 0.02% Sodium azide Constituents: 40% Glycerol (glycerin, glycerine), PBS |
| Purity | Immunogen affinity purified |
| Clonality | Polyclonal |
| Isotype | IgG |

Applications

The Abpromise guarantee

Our **Abpromise guarantee** covers the use of ab226247 in the following tested applications.

The application notes include recommended starting dilutions; optimal dilutions/concentrations should be determined by the end user.

| Application | Abreviews | Notes |
|-------------|-----------|--|
| ICC/IF | | Use a concentration of 0.25 - 2 µg/ml. Fixation/Permeabilization: PFA/Triton X-100. |

Target

Function

Histone methyltransferase. Preferentially methylates 'Lys-36' of histone H3 and 'Lys-20' of histone H4 (in vitro). Transcriptional intermediary factor capable of both negatively or positively influencing transcription, depending on the cellular context.

Tissue specificity

Expressed in the fetal/adult brain, kidney, skeletal muscle, spleen, and the thymus, and faintly in the lung.

Involvement in disease

Defects in NSD1 are the cause of Sotos syndrome (SOTOS) [MIM:117550]; also known as cerebral gigantism. It is a disorder characterized by excessively rapid growth, acromegalic features, and a nonprogressive cerebral disorder with mental retardation. High-arched palate and prominent jaw are noted in several patients. Most cases of Sotos syndrome are sporadic and may represent new dominant mutation.

Defects in NSD1 are the cause of Weaver syndrome (WES) [MIM:277590]. WES is a syndrome of accelerated growth and osseous maturation, unusual craniofacial appearance, hoarse and low-pitched cry, and hypertonia with camptodactyly.

Defects in NSD1 are a cause of Beckwith-Wiedemann syndrome (BWS) [MIM:130650]. BWS is a genetically heterogeneous disorder characterized by anterior abdominal wall defects including exomphalos (omphalocele), pre- and postnatal overgrowth, and macroglossia. Additional less frequent complications include specific developmental defects and a predisposition to embryonal tumors.

Note=A chromosomal aberration involving NSD1 is found in childhood acute myeloid leukemia. Translocation t(5;11)(q35;p15.5) with NUP98.

Note=A chromosomal aberration involving NSD1 is found in an adult form of myelodysplastic syndrome (MDS). Insertion of NUP98 into NSD1 generates a NUP98-NSD1 fusion product.

Sequence similarities

Belongs to the histone-lysine methyltransferase family.

Contains 1 AWS domain.

Contains 4 PHD-type zinc fingers.

Contains 1 post-SET domain.

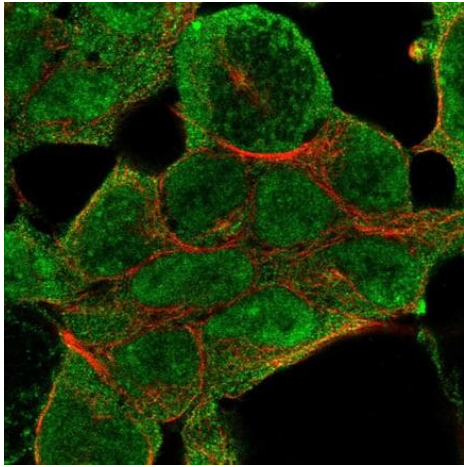
Contains 2 PWWP domains.

Contains 1 SET domain.

Cellular localization

Nucleus. Chromosome.

Images



Immunocytochemistry/ Immunofluorescence - Anti-KMT3B / NSD1 antibody (ab226247)

PFA-fixed, Triton X-100 permeabilized HEK-293 (human epithelial cell line from embryonic kidney) cells stained for KMT3B / NSD1 (green) using ab226247 at 4 µg/ml in ICC/IF.

Please note: All products are "FOR RESEARCH USE ONLY. NOT FOR USE IN DIAGNOSTIC PROCEDURES"

Our Abpromise to you: Quality guaranteed and expert technical support

- Replacement or refund for products not performing as stated on the datasheet
- Valid for 12 months from date of delivery
- Response to your inquiry within 24 hours
- We provide support in Chinese, English, French, German, Japanese and Spanish
- Extensive multi-media technical resources to help you
- We investigate all quality concerns to ensure our products perform to the highest standards

If the product does not perform as described on this datasheet, we will offer a refund or replacement. For full details of the Abpromise, please visit <https://www.abcam.com/abpromise> or contact our technical team.

Terms and conditions

- Guarantee only valid for products bought direct from Abcam or one of our authorized distributors