


## Product datasheet

### Anti-Kv1.6/RCK2 antibody ab21089

★★★★★ [1 Abreviews](#) [1 References](#) [2 Images](#)

#### Overview

<b>Product name</b>	Anti-Kv1.6/RCK2 antibody
<b>Description</b>	Rabbit polyclonal to Kv1.6/RCK2
<b>Host species</b>	Rabbit
<b>Specificity</b>	In human HEK293 cells ab21089 recognised a band of ~58 kDa, the predicted MW of Kv1.6/RCK2 (data not shown). This band was not blocked by the immunising peptide. Additional bands of 100 kDa, 25 kDa and 20 kDa were also recognised.
<b>Tested applications</b>	<b>Suitable for:</b> ICC/IF, WB
<b>Species reactivity</b>	<b>Reacts with:</b> Mouse, Human <b>Predicted to work with:</b> Rat 
<b>Immunogen</b>	Synthetic peptide corresponding to Human Kv1.6/RCK2 aa 500 to the C-terminus (C terminal) conjugated to keyhole limpet haemocyanin. (Peptide available as <a href="#">ab23431</a> )
<b>General notes</b>	<p>The Life Science industry has been in the grips of a reproducibility crisis for a number of years. Abcam is leading the way in addressing this with our range of recombinant monoclonal antibodies and knockout edited cell lines for gold-standard validation. Please check that this product meets your needs before purchasing.</p> <p>If you have any questions, special requirements or concerns, please send us an inquiry and/or contact our Support team ahead of purchase. Recommended alternatives for this product can be found below, along with publications, customer reviews and Q&amp;As</p>

#### Properties

<b>Form</b>	Liquid
<b>Storage instructions</b>	Shipped at 4°C. Store at +4°C short term (1-2 weeks). Upon delivery aliquot. Store at -20°C or -80°C. Avoid freeze / thaw cycle.
<b>Storage buffer</b>	<p>pH: 7.40</p> <p>Preservative: 0.02% Sodium azide</p> <p>Constituent: PBS</p> <p>Batches of this product that have a concentration &lt; 1mg/ml may have BSA added as a stabilising agent. If you would like information about the formulation of a specific lot, please contact our scientific support team who will be happy to help.</p>

<b>Purity</b>	Immunogen affinity purified
<b>Clonality</b>	Polyclonal
<b>Isotype</b>	IgG

## Applications

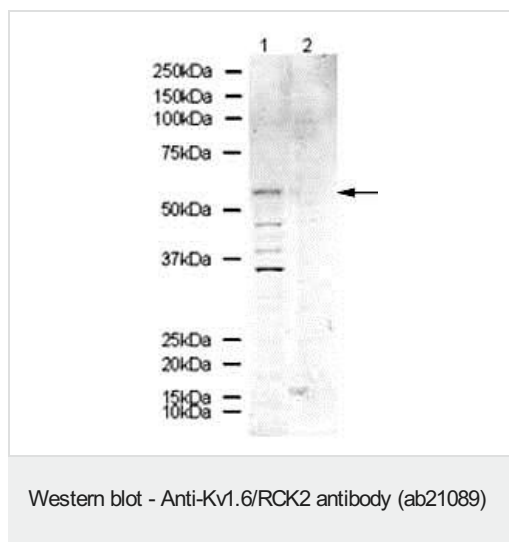
**The Abpromise guarantee** Our **Abpromise guarantee** covers the use of ab21089 in the following tested applications. The application notes include recommended starting dilutions; optimal dilutions/concentrations should be determined by the end user.

Application	Abreviews	Notes
<b>ICC/IF</b>		Use a concentration of 5 µg/ml.
<b>WB</b>		Use a concentration of 1 µg/ml. Detects a band of approximately 58 kDa (predicted molecular weight: 58 kDa).

## Target

<b>Function</b>	Mediates the voltage-dependent potassium ion permeability of excitable membranes. Assuming opened or closed conformations in response to the voltage difference across the membrane, the protein forms a potassium-selective channel through which potassium ions may pass in accordance with their electrochemical gradient.
<b>Sequence similarities</b>	Belongs to the potassium channel family. A (Shaker) (TC 1.A.1.2) subfamily. Kv1.6/KCNA6 sub-subfamily.
<b>Domain</b>	<p>The N-terminus may be important in determining the rate of inactivation of the channel while the tail may play a role in modulation of channel activity and/or targeting of the channel to specific subcellular compartments.</p> <p>The segment S4 is probably the voltage-sensor and is characterized by a series of positively charged amino acids at every third position.</p>
<b>Cellular localization</b>	Membrane.

## Images



**All lanes :** Anti-Kv1.6/RCK2 antibody (ab21089) at 1 µg/ml

**Lane 1 :** Mouse Brain Lysate

**Lane 2 :** Mouse Brain Lysate Kv1.6/RCK2 with Human Kv1.6/RCK2 peptide (**ab23431**) at 1 µg/ml

Lysates/proteins at 20 µg per lane.

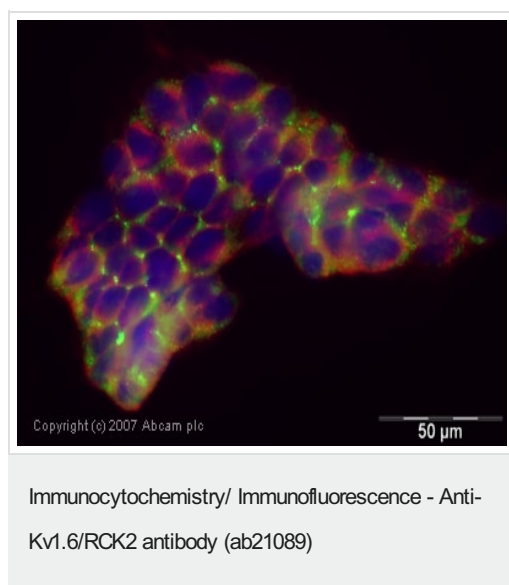
### Secondary

**Lane 1 :** Alexa Fluor Goat polyclonal to Rabbit IgG at 1/10000 dilution

**Lane 2 :** Alexa Fluor Goat polyclonal to Rabbit IgG

**Predicted band size:** 58 kDa

ab21089 recognises a band corresponding to the predicted MW of Kv1.6/RCK2 in mouse brain lysate (lane 1). Antibody binding to this band may be blocked using the immunising peptide, **ab23431** (lane 2). The antibody also recognises additional proteins. These may be degradation/cleavage products of Kv1.6/RCK2, or they may represent non-specific binding by the antibody.



ICC/IF image of ab21089 stained human HEK (Human embryonic kidney) 293 cells. The cells were PFA fixed (10 min), permeabilised in TBS-T (20 min) and incubated with the antibody (ab21089, 5µg/ml) for 1h at room temperature. 1%BSA / 10% normal goat serum / 0.3M glycine was used to quench autofluorescence and block non-specific protein-protein interactions. The secondary antibody (green) was Alexa Fluor® 488 goat anti-rabbit IgG (H+L) used at a 1/1000 dilution for 1h. Alexa Fluor® 594 WGA was used to label plasma membranes (red). DAPI was used to stain the cell nuclei (blue).

**Please note:** All products are "FOR RESEARCH USE ONLY. NOT FOR USE IN DIAGNOSTIC PROCEDURES"

### Our Abpromise to you: Quality guaranteed and expert technical support

- Replacement or refund for products not performing as stated on the datasheet

- Valid for 12 months from date of delivery
- Response to your inquiry within 24 hours
- We provide support in Chinese, English, French, German, Japanese and Spanish
- Extensive multi-media technical resources to help you
- We investigate all quality concerns to ensure our products perform to the highest standards

If the product does not perform as described on this datasheet, we will offer a refund or replacement. For full details of the Abpromise, please visit <https://www.abcam.com/abpromise> or contact our technical team.

#### **Terms and conditions**

---

- Guarantee only valid for products bought direct from Abcam or one of our authorized distributors