

Product datasheet

Anti-Lactate Dehydrogenase antibody ab125683

★★★★★ [1 Abreviews](#) [24 References](#) [3 Images](#)

Overview

Product name	Anti-Lactate Dehydrogenase antibody
Description	Rabbit polyclonal to Lactate Dehydrogenase
Host species	Rabbit
Tested applications	Suitable for: WB, IHC-P, ICC/IF
Species reactivity	Reacts with: Human
Immunogen	Recombinant fragment corresponding to Human Lactate Dehydrogenase aa 100-350.
Positive control	A431 cell lysate, 293T cell lysate, Jurkat cell lysate, Raji cell lysate and Human Lung papillary tissue.
General notes	<p>The Life Science industry has been in the grips of a reproducibility crisis for a number of years. Abcam is leading the way in addressing this with our range of recombinant monoclonal antibodies and knockout edited cell lines for gold-standard validation. Please check that this product meets your needs before purchasing.</p> <p>If you have any questions, special requirements or concerns, please send us an inquiry and/or contact our Support team ahead of purchase. Recommended alternatives for this product can be found below, along with publications, customer reviews and Q&As</p>

Properties

Form	Liquid
Storage instructions	Shipped at 4°C. Upon delivery aliquot and store at -20°C or -80°C. Avoid repeated freeze / thaw cycles.
Storage buffer	pH: 7.00 Preservative: 0.025% Proclin 300 Constituents: 78% PBS, 1% BSA, 20% Glycerol (glycerin, glycerine)
Purity	Immunogen affinity purified
Clonality	Polyclonal
Isotype	IgG

Applications

The Abpromise guarantee

Our **Abpromise guarantee** covers the use of ab125683 in the following tested applications.

The application notes include recommended starting dilutions; optimal dilutions/concentrations should be determined by the end user.

Application	Abreviews	Notes
WB	★★★★★ (1)	1/500 - 1/3000. Predicted molecular weight: 37 kDa.
IHC-P		1/100 - 1/500. Perform heat mediated antigen retrieval with citrate buffer pH 6 before commencing with IHC staining protocol.
ICC/IF		1/100 - 1/500.

Target

Pathway

Fermentation; pyruvate fermentation to lactate; (S)-lactate from pyruvate: step 1/1.

Involvement in disease

Defects in LDHA are the cause of glycogen storage disease type 11 (GSD11) [MIM:612933]. A metabolic disorder that results in exertional myoglobinuria, pain, cramps and easy fatigue.

Sequence similarities

Belongs to the LDH/MDH superfamily. LDH family.

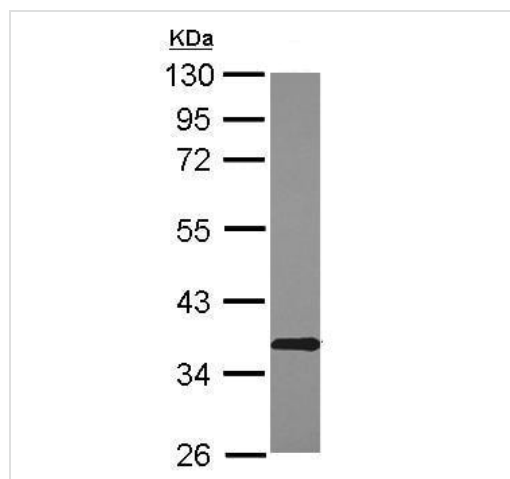
Post-translational modifications

ISGylated.

Cellular localization

Cytoplasm.

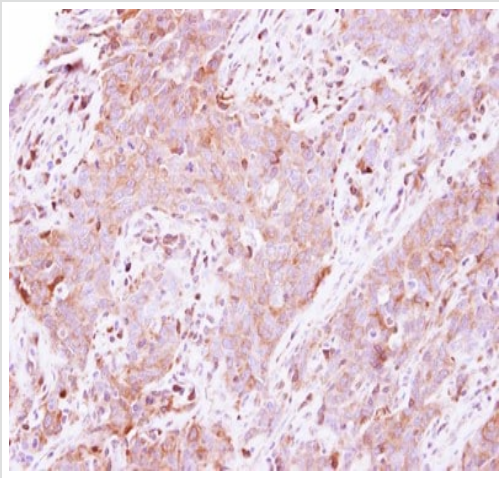
Images



Anti-Lactate Dehydrogenase antibody (ab125683) at 1/1000 dilution + A431 lysate at 30 µg

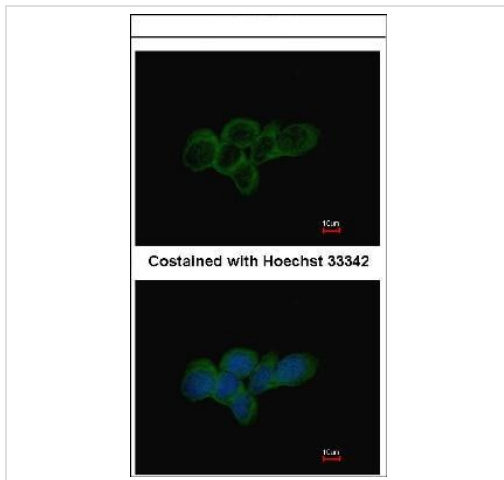
Predicted band size: 37 kDa

Western blot - Anti-Lactate Dehydrogenase antibody (ab125683)



ab125683, at 1/500 dilution, staining Lactate Dehydrogenase in Formalin-fixed, Paraffin-embedded Human Lung papillary tissue by Immunohistochemistry.

Immunohistochemistry (Formalin/PFA-fixed paraffin-embedded sections) - Anti-Lactate Dehydrogenase antibody (ab125683)



ab125683, at 1/500 dilution, staining Lactate Dehydrogenase in Methanol-fixed A431 cells by Immunocytochemistry/Immunofluorescence.

Immunocytochemistry/ Immunofluorescence - Anti-Lactate Dehydrogenase antibody (ab125683)

Please note: All products are "FOR RESEARCH USE ONLY. NOT FOR USE IN DIAGNOSTIC PROCEDURES"

Our Abpromise to you: Quality guaranteed and expert technical support

- Replacement or refund for products not performing as stated on the datasheet
- Valid for 12 months from date of delivery
- Response to your inquiry within 24 hours

- We provide support in Chinese, English, French, German, Japanese and Spanish
- Extensive multi-media technical resources to help you
- We investigate all quality concerns to ensure our products perform to the highest standards

If the product does not perform as described on this datasheet, we will offer a refund or replacement. For full details of the Abpromise, please visit <https://www.abcam.com/abpromise> or contact our technical team.

Terms and conditions

- Guarantee only valid for products bought direct from Abcam or one of our authorized distributors