


## Product datasheet

# Anti-Lactate Dehydrogenase antibody ab231903

[4 Images](#)

### Overview

---

<b>Product name</b>	Anti-Lactate Dehydrogenase antibody
<b>Description</b>	Rabbit polyclonal to Lactate Dehydrogenase
<b>Host species</b>	Rabbit
<b>Tested applications</b>	<b>Suitable for:</b> WB, IHC-P
<b>Species reactivity</b>	<b>Reacts with:</b> Mouse, Human, Pig <b>Predicted to work with:</b> Rat, Rabbit, Cow, Chimpanzee, Macaque monkey, Orangutan 
<b>Immunogen</b>	Recombinant full length protein corresponding to Pig Lactate Dehydrogenase aa 1 to the C-terminus. N-terminal His-tag and GST-tag. Expressed in E. coli. Database link: <a href="#">P00339</a> <a href="#">Run BLAST with</a> <a href="#">Run BLAST with</a>
<b>Positive control</b>	WB: Recombinant porcine Lactate Dehydrogenase protein; porcine serum and kidney tissue lysate; mouse testis tissue lysate; A431 and A375 whole cell lysate. IHC-P: Porcine skeletal muscle and heart tissue.
<b>General notes</b>	<p>The Life Science industry has been in the grips of a reproducibility crisis for a number of years. Abcam is leading the way in addressing this with our range of recombinant monoclonal antibodies and knockout edited cell lines for gold-standard validation. Please check that this product meets your needs before purchasing.</p> <p>If you have any questions, special requirements or concerns, please send us an inquiry and/or contact our Support team ahead of purchase. Recommended alternatives for this product can be found below, along with publications, customer reviews and Q&amp;As</p>

### Properties

---

<b>Form</b>	Liquid
<b>Storage instructions</b>	Shipped at 4°C. Store at +4°C short term (1-2 weeks). Upon delivery aliquot. Store at -20°C long term. Avoid freeze / thaw cycle.
<b>Storage buffer</b>	pH: 7.40 Preservative: 0.011% Proclin 300 Constituents: 55.77% Glycerol (glycerin, glycerine), 44.219% PBS
<b>Purity</b>	Protein A purified
<b>Purification notes</b>	Antigen-specific affinity chromatography followed by Protein A affinity chromatography.

<b>Clonality</b>	Polyclonal
<b>Isotype</b>	IgG

## Applications

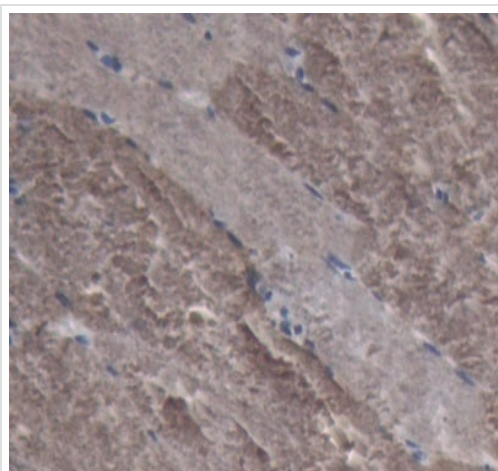
**The Abpromise guarantee** Our **Abpromise guarantee** covers the use of ab231903 in the following tested applications. The application notes include recommended starting dilutions; optimal dilutions/concentrations should be determined by the end user.

Application	Abreviews	Notes
<b>WB</b>		Use a concentration of 0.2 - 2 µg/ml. Predicted molecular weight: 37 kDa.
<b>IHC-P</b>		Use a concentration of 5 - 20 µg/ml.

## Target

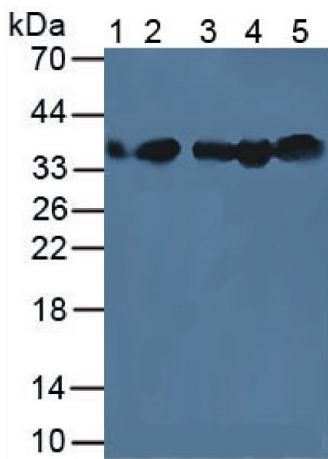
<b>Pathway</b>	Fermentation; pyruvate fermentation to lactate; (S)-lactate from pyruvate: step 1/1.
<b>Involvement in disease</b>	Defects in LDHA are the cause of glycogen storage disease type 11 (GSD11) [MIM:612933]. A metabolic disorder that results in exertional myoglobinuria, pain, cramps and easy fatigue.
<b>Sequence similarities</b>	Belongs to the LDH/MDH superfamily. LDH family.
<b>Post-translational modifications</b>	ISGylated.
<b>Cellular localization</b>	Cytoplasm.

## Images



Formalin-fixed, paraffin-embedded porcine skeletal muscle tissue stained for Lactate Dehydrogenase using ab231903 at 20 µg/ml in immunohistochemical analysis. DAB staining.

Immunohistochemistry (Formalin/PFA-fixed paraffin-embedded sections) - Anti-Lactate Dehydrogenase antibody (ab231903)



Western blot - Anti-Lactate Dehydrogenase antibody (ab231903)

**All lanes** : Anti-Lactate Dehydrogenase antibody (ab231903) at 3 µg/ml

**Lane 1** : Porcine serum

**Lane 2** : A431 (human epidermoid carcinoma cell line) whole cell lysate

**Lane 3** : A-375 (human malignant melanoma cell line) whole cell lysate

**Lane 4** : Porcine kidney tissue lysate

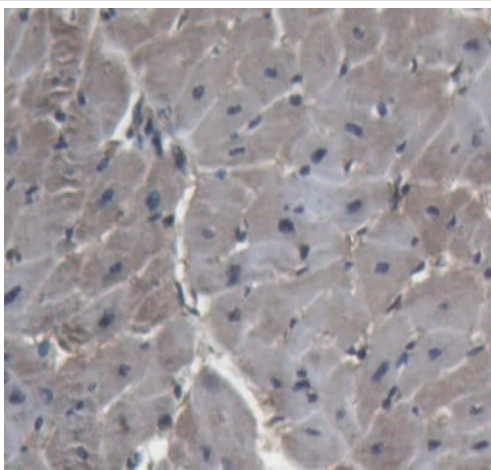
**Lane 5** : Mouse testis tissue lysate

### Secondary

**All lanes** : HRP-Linked Guinea pig Anti-Rabbit at 1/1000 dilution

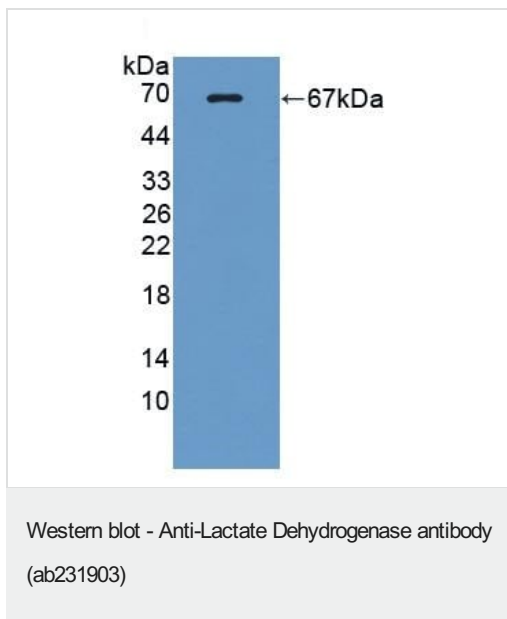
**Predicted band size:** 37 kDa

**Observed band size:** 37 kDa



Immunohistochemistry (Formalin/PFA-fixed paraffin-embedded sections) - Anti-Lactate Dehydrogenase antibody (ab231903)

Formalin-fixed, paraffin-embedded porcine heart tissue stained for Lactate Dehydrogenase using ab231903 at 20 µg/ml in immunohistochemical analysis. DAB staining.



Anti-Lactate Dehydrogenase antibody (ab231903) at 3 µg/ml +  
Recombinant porcine Lactate Dehydrogenase protein

**Secondary**

HRP-Linked Guinea pig Anti-Rabbit at 1/1000 dilution

**Predicted band size:** 37 kDa

**Observed band size:** 67 kDa

**Please note:** All products are "FOR RESEARCH USE ONLY. NOT FOR USE IN DIAGNOSTIC PROCEDURES"

**Our Abpromise to you: Quality guaranteed and expert technical support**

- Replacement or refund for products not performing as stated on the datasheet
- Valid for 12 months from date of delivery
- Response to your inquiry within 24 hours
- We provide support in Chinese, English, French, German, Japanese and Spanish
- Extensive multi-media technical resources to help you
- We investigate all quality concerns to ensure our products perform to the highest standards

If the product does not perform as described on this datasheet, we will offer a refund or replacement. For full details of the Abpromise, please visit <https://www.abcam.com/abpromise> or contact our technical team.

**Terms and conditions**

- Guarantee only valid for products bought direct from Abcam or one of our authorized distributors