

Product datasheet

Anti-Lactate Dehydrogenase B/LDH-B antibody [EP1565Y] α b53292

KO VALIDATED Recombinant RabMAb

★★★★☆ 1 Abreviews 14 References 5 Images

Overview

Product name	Anti-Lactate Dehydrogenase B/LDH-B antibody [EP1565Y]
Description	Rabbit monoclonal [EP1565Y] to Lactate Dehydrogenase B/LDH-B
Host species	Rabbit
Tested applications	Suitable for: WB, IHC-P Unsuitable for: Flow Cyt (Intra) or ICC/IF
Species reactivity	Reacts with: Human
Immunogen	Synthetic peptide within Human Lactate Dehydrogenase B/LDH-B aa 1-100 (N terminal). The exact sequence is proprietary. Database link: P07195
Positive control	WB: Hap1, HEK-293T and HeLa cell lysates. IHC-P: Human heart muscle.
General notes	<p>This product is a recombinant monoclonal antibody, which offers several advantages including:</p> <ul style="list-style-type: none"> - High batch-to-batch consistency and reproducibility - Improved sensitivity and specificity - Long-term security of supply - Animal-free production <p>For more information see here.</p> <p>Our RabMAb[®] technology is a patented hybridoma-based technology for making rabbit monoclonal antibodies. For details on our patents, please refer to RabMAb[®] patents.</p> <p>Mouse, Rat: We have preliminary internal testing data to indicate this antibody may not react with these species. Please contact us for more information.</p>

Properties

Form	Liquid
Storage instructions	Shipped at 4°C. Store at -20°C. Stable for 12 months at -20°C.
Storage buffer	pH: 7.20 Preservative: 0.01% Sodium azide Constituents: 59% PBS, 40% Glycerol (glycerin, glycerine), 0.5% BSA

Purity	Protein A purified
Clonality	Monoclonal
Clone number	EP1565Y
Isotype	IgG

Applications

The Abpromise guarantee Our **Abpromise guarantee** covers the use of ab53292 in the following tested applications. The application notes include recommended starting dilutions; optimal dilutions/concentrations should be determined by the end user.

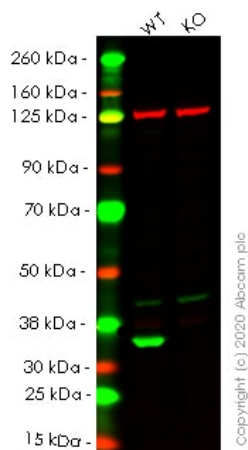
Application	Abreviews	Notes
WB		1/50000 - 1/200000. Detects a band of approximately 37 kDa (predicted molecular weight: 37 kDa).
IHC-P	★★★★★ (1)	Use at an assay dependent concentration. Perform heat mediated antigen retrieval with citrate buffer pH 6 before commencing with IHC staining protocol.

Application notes Is unsuitable for Flow Cyt (Intra) or ICC/IF.

Target

Pathway	Fermentation; pyruvate fermentation to lactate; (S)-lactate from pyruvate: step 1/1.
Involvement in disease	Note=Defects in LDHB result in deficiency of lactate dehydrogenase, a condition with no clear symptomatic consequences. Lactate dehydrogenase deficiency can probably be considered a non-disease.
Sequence similarities	Belongs to the LDH/MDH superfamily. LDH family.
Cellular localization	Cytoplasm.

Images



Western blot - Anti-Lactate Dehydrogenase B/LDH-B antibody [EP1565Y] (ab53292)

All lanes : Anti-Lactate Dehydrogenase B/LDH-B antibody [EP1565Y] (ab53292) at 1/5000 dilution

Lane 1 : Wild-type HEK-293T cell lysate

Lane 2 : LDHB knockout HEK-293T cell lysate

Lysates/proteins at 20 µg per lane.

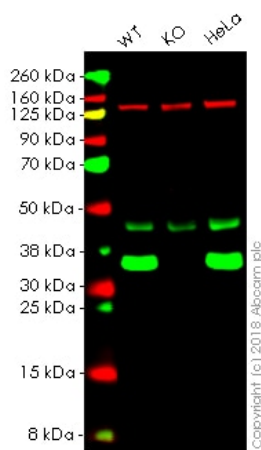
Performed under reducing conditions.

Predicted band size: 37 kDa

Observed band size: 37 kDa

Lanes 1- 2: Merged signal (red and green). Green - ab53292 observed at 37 kDa. Red - Anti-Vinculin antibody [VIN-54] observed at 124 kDa.

ab53292 was shown to react with Lactate Dehydrogenase B/LDH-B in wild-type HEK-293T cells in western blot. Loss of signal was observed when knockout cell line [ab255403](#) (knockout cell lysate [ab263761](#)) was used. Wild-type HEK-293T and LDHB knockout HEK-293T cell lysates were subjected to SDS-PAGE. Membrane was blocked for 1 hour at room temperature in 0.1% TBST with 3% non-fat dried milk. ab53292 and Anti-Vinculin antibody [VIN-54] overnight at 4°C at a 1 in 5000 dilution and a 1 in 20000 dilution respectively. Blots were developed with Goat anti-Rabbit IgG H&L (IRDye®800CW) preadsorbed ([ab216773](#)) and Goat anti-Mouse IgG H&L (IRDye®680RD) preadsorbed ([ab216776](#)) secondary antibodies at 1 in 20000 dilution for 1 hour at room temperature before imaging.



Western blot - Anti-Lactate Dehydrogenase B/LDH-B antibody [EP1565Y] (ab53292)

All lanes : Anti-Lactate Dehydrogenase B/LDH-B antibody [EP1565Y] (ab53292) at 1/50000 dilution

Lane 1 : Wild-type HAP1 whole cell lysate

Lane 2 : LDHB (Lactate Dehydrogenase B) knockout HAP1 whole cell lysate

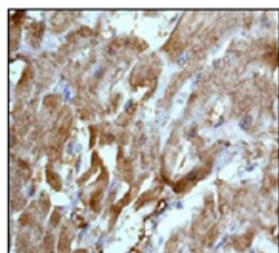
Lane 3 : HeLa whole cell lysate

Lysates/proteins at 20 µg per lane.

Predicted band size: 37 kDa

Lanes 1 - 3: Merged signal (red and green). Green - ab53292 observed at 37 kDa. Red - loading control, **ab130007**, observed at 130 kDa.

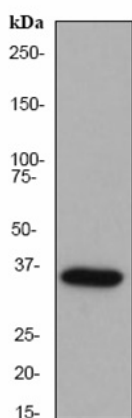
ab53292 was shown to specifically react with Lactate Dehydrogenase B in wild-type HAP1 cells as signal was lost in LDHB (Lactate Dehydrogenase B) knockout cells. Wild-type and LDHB (Lactate Dehydrogenase B) knockout samples were subjected to SDS-PAGE. Ab53292 and **ab130007** (Mouse anti-Vinculin loading control) were incubated overnight at 4°C at 1/50000 dilution and 1/20000 dilution respectively. Blots were developed with Goat anti-Rabbit IgG H&L (IRDye® 800CW) preabsorbed **ab216773** and Goat anti-Mouse IgG H&L (IRDye® 680RD) preabsorbed **ab216776** secondary antibodies at 1/20000 dilution for 1 hour at room temperature before imaging.



Immunohistochemistry (Formalin/PFA-fixed paraffin-embedded sections) - Anti-Lactate Dehydrogenase B/LDH-B antibody [EP1565Y] (ab53292)

Human heart muscle labeled with ab53292 at 1/100 - 1/250 dilution

Perform heat mediated antigen retrieval with citrate buffer pH 6 before commencing with IHC staining protocol.



Anti-Lactate Dehydrogenase B/LDH-B antibody [EP1565Y]
(ab53292) + HeLa cell lysate at 10 µg

Secondary

Goat anti-rabbit HRP

Predicted band size: 37 kDa

Observed band size: 37 kDa

Western blot - Anti-Lactate Dehydrogenase B/LDH-B antibody [EP1565Y] (ab53292)

Why choose a recombinant antibody?



Research with confidence
Consistent and reproducible results



Long-term and scalable supply
Recombinant technology



Success from the first experiment
Confirmed specificity



Ethical standards compliant
Animal-free production

Anti-Lactate Dehydrogenase B/LDH-B antibody
[EP1565Y] (ab53292)

Please note: All products are "FOR RESEARCH USE ONLY. NOT FOR USE IN DIAGNOSTIC PROCEDURES"

Our Abpromise to you: Quality guaranteed and expert technical support

- Replacement or refund for products not performing as stated on the datasheet
- Valid for 12 months from date of delivery
- Response to your inquiry within 24 hours
- We provide support in Chinese, English, French, German, Japanese and Spanish
- Extensive multi-media technical resources to help you
- We investigate all quality concerns to ensure our products perform to the highest standards

If the product does not perform as described on this datasheet, we will offer a refund or replacement. For full details of the Abpromise, please visit <https://www.abcam.com/abpromise> or contact our technical team.

Terms and conditions

- Guarantee only valid for products bought direct from Abcam or one of our authorized distributors