


Product datasheet

Anti-Lamin B2 antibody [EPR9700(B)] ab138516

Recombinant RabMAb

[1 References](#) [3 Images](#)

Overview

Product name	Anti-Lamin B2 antibody [EPR9700(B)]
Description	Rabbit monoclonal [EPR9700(B)] to Lamin B2
Host species	Rabbit
Tested applications	Suitable for: Flow Cyt (Intra), WB Unsuitable for: ICC/IF, IHC-P or IP
Species reactivity	Reacts with: Human Predicted to work with: Mouse, Rat 
Immunogen	Synthetic peptide within Human Lamin B2 aa 50-150. The exact sequence is proprietary.
Positive control	HepG2, Jurkat, HeLa, and Raji cell lysates. HeLa cells.
General notes	This product is a recombinant monoclonal antibody, which offers several advantages including: <ul style="list-style-type: none"> - High batch-to-batch consistency and reproducibility - Improved sensitivity and specificity - Long-term security of supply - Animal-free production For more information see here . Our RabMAb [®] technology is a patented hybridoma-based technology for making rabbit monoclonal antibodies. For details on our patents, please refer to RabMAb[®] patents .

Properties

Form	Liquid
Storage instructions	Shipped at 4°C. Upon delivery aliquot and store at -20°C. Avoid freeze / thaw cycles.
Storage buffer	pH: 7.2 Preservative: 0.01% Sodium azide Constituents: 9% PBS, 40% Glycerol (glycerin, glycerine), 0.05% BSA, 50% Tissue culture supernatant
Purity	Tissue culture supernatant
Clonality	Monoclonal
Clone number	EPR9700(B)

Isotype

IgG

Applications

The Abpromise guarantee

Our **Abpromise guarantee** covers the use of ab138516 in the following tested applications.

The application notes include recommended starting dilutions; optimal dilutions/concentrations should be determined by the end user.

Application	Abreviews	Notes
Flow Cyt (Intra)		1/10 - 1/100. ab172730 - Rabbit monoclonal IgG, is suitable for use as an isotype control with this antibody.
WB		1/1000 - 1/10000. Detects a band of approximately 68 kDa (predicted molecular weight: 68 kDa).

Application notes

Is unsuitable for ICC/IF, IHC-P or IP.

Target

Function

Lamins are components of the nuclear lamina, a fibrous layer on the nucleoplasmic side of the inner nuclear membrane, which is thought to provide a framework for the nuclear envelope and may also interact with chromatin.

Involvement in disease

Defects in LMNB2 are a cause of partial acquired lipodystrophy (APLD) [MIM:608709]. A rare childhood disease characterized by loss of subcutaneous fat from the face and trunk. Fat deposition on the pelvic girdle and lower limbs is normal or excessive. Most frequently, onset between 5 and 15 years of age. Most affected subjects are females and some show no other abnormality, but many develop glomerulonephritis, diabetes mellitus, hyperlipidemia, and complement deficiency. Mental retardation in some cases. APLD is a sporadic disorder of unknown etiology.

Sequence similarities

Belongs to the intermediate filament family.

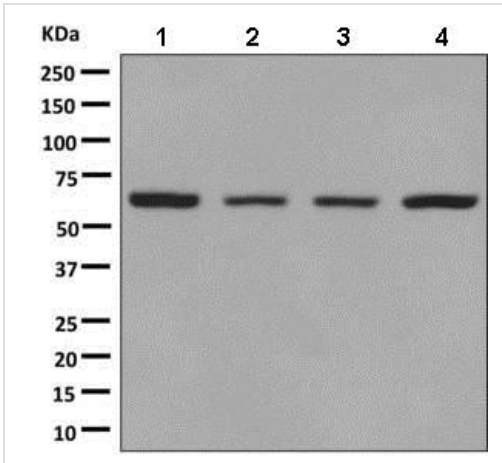
Post-translational modifications

B-type lamins undergo a series of modifications, such as farnesylation and phosphorylation. Increased phosphorylation of the lamins occurs before envelope disintegration and probably plays a role in regulating lamin associations.

Cellular localization

Nucleus inner membrane.

Images



Western blot - Anti-Lamin B2 antibody
[EPR9700(B)] (ab138516)

All lanes : Anti-Lamin B2 antibody [EPR9700(B)] (ab138516) at 1/1000 dilution

Lane 1 : HepG2 cell lysate

Lane 2 : Jurkat cell lysate

Lane 3 : HeLa cell lysate

Lane 4 : Raji cell lysate

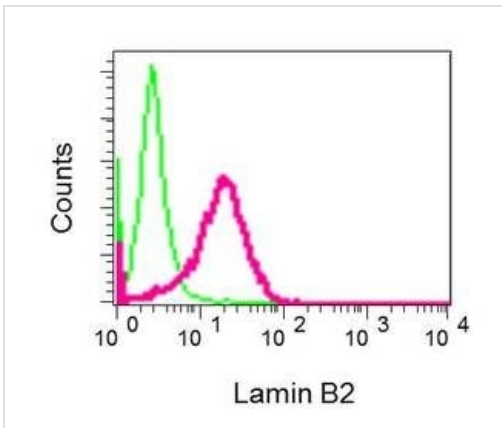
Lysates/proteins at 10 µg per lane.

Secondary

All lanes : HRP labelled goat anti-rabbit at 1/2000 dilution

Predicted band size: 68 kDa

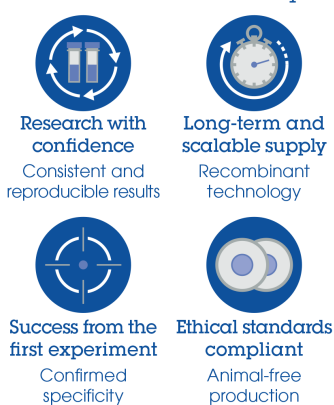
Observed band size: 68 kDa



Flow Cytometry (Intracellular) - Anti-Lamin B2
antibody [EPR9700(B)] (ab138516)

Intracellular flow cytometrical analysis of permeabilized HeLa cells with ab138516 at a dilution of 1/10 (red) or a rabbit IgG negative (green).

Why choose a recombinant antibody?



- Research with confidence**
Consistent and reproducible results
- Long-term and scalable supply**
Recombinant technology
- Success from the first experiment**
Confirmed specificity
- Ethical standards compliant**
Animal-free production

Anti-Lamin B2 antibody [EPR9700(B)] (ab138516)

Please note: All products are "FOR RESEARCH USE ONLY. NOT FOR USE IN DIAGNOSTIC PROCEDURES"

Our Abpromise to you: Quality guaranteed and expert technical support

- Replacement or refund for products not performing as stated on the datasheet
- Valid for 12 months from date of delivery
- Response to your inquiry within 24 hours
- We provide support in Chinese, English, French, German, Japanese and Spanish
- Extensive multi-media technical resources to help you
- We investigate all quality concerns to ensure our products perform to the highest standards

If the product does not perform as described on this datasheet, we will offer a refund or replacement. For full details of the Abpromise, please visit <https://www.abcam.com/abpromise> or contact our technical team.

Terms and conditions

- Guarantee only valid for products bought direct from Abcam or one of our authorized distributors