

## Product datasheet

# Anti-Laminin alpha 4/LAMA4 antibody [3H2] ab205568

[2 References](#) [2 Images](#)

### Overview

---

<b>Product name</b>	Anti-Laminin alpha 4/LAMA4 antibody [3H2]
<b>Description</b>	Mouse monoclonal [3H2] to Laminin alpha 4/LAMA4
<b>Host species</b>	Mouse
<b>Tested applications</b>	<b>Suitable for:</b> IHC-P, WB
<b>Species reactivity</b>	<b>Reacts with:</b> Human
<b>Immunogen</b>	Full length native protein (purified) corresponding to Human Laminin alpha 4/LAMA4. Immunoaffinity-purified Laminin 411 (laminin-8 (alpha4beta1gamma1) from platelets. Database link: <a href="#">Q16363</a>
<b>Positive control</b>	Human platelet lysate. Human embryonic kidney preparation.
<b>General notes</b>	<p>The Life Science industry has been in the grips of a reproducibility crisis for a number of years. Abcam is leading the way in addressing this with our range of recombinant monoclonal antibodies and knockout edited cell lines for gold-standard validation. Please check that this product meets your needs before purchasing.</p> <p>If you have any questions, special requirements or concerns, please send us an inquiry and/or contact our Support team ahead of purchase. Recommended alternatives for this product can be found below, along with publications, customer reviews and Q&amp;As</p>

### Properties

---

<b>Form</b>	Liquid
<b>Storage instructions</b>	Shipped at 4°C. Store at +4°C short term (1-2 weeks). Upon delivery aliquot. Store at -20°C long term. Avoid freeze / thaw cycle.
<b>Storage buffer</b>	pH: 7.40 Preservative: 0.1% Sodium azide Constituent: 99% PBS
<b>Purity</b>	Protein G purified
<b>Clonality</b>	Monoclonal
<b>Clone number</b>	3H2
<b>Isotype</b>	IgG1

## Applications

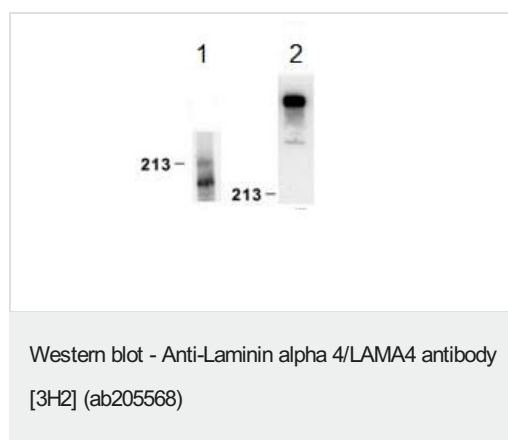
**The Abpromise guarantee** Our **Abpromise guarantee** covers the use of ab205568 in the following tested applications. The application notes include recommended starting dilutions; optimal dilutions/concentrations should be determined by the end user.

Application	Abreviews	Notes
IHC-P		Use a concentration of 5 - 10 µg/ml.
WB		Use a concentration of 0.5 - 1 µg/ml. Predicted molecular weight: 202 kDa. Reduced conditions.

## Target

<b>Function</b>	Binding to cells via a high affinity receptor, laminin is thought to mediate the attachment, migration and organization of cells into tissues during embryonic development by interacting with other extracellular matrix components.
<b>Tissue specificity</b>	In adult, strong expression in heart, lung, ovary small and large intestines, placenta, liver; weak or no expression in skeletal muscle, kidney, pancreas, testis, prostate, brain. High expression in fetal lung and kidney. Expression in fetal and newborn tissues is observed in certain mesenchymal cells in tissues such as smooth muscle and dermis.
<b>Involvement in disease</b>	Cardiomyopathy, dilated 1JJ
<b>Sequence similarities</b>	Contains 4 laminin EGF-like domains. Contains 5 laminin G-like domains.
<b>Domain</b>	The alpha-helical domains I and II are thought to interact with other laminin chains to form a coiled coil structure. Domain G is globular.
<b>Cellular localization</b>	Secreted, extracellular space, extracellular matrix, basement membrane. Major component.

## Images

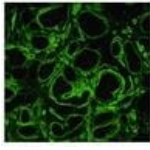


**All lanes** : Anti-Laminin alpha 4/LAMA4 antibody [3H2] (ab205568) at 1 µg/ml

**Lane 1** : Human platelet lysate; reducing conditions

**Lane 2** : Human platelet lysate; non-reducing conditions

**Predicted band size:** 202 kDa



Immunohistochemical analysis of Human embryonic kidney preparation labeling Laminin alpha 4/LAMA4 with ab205568 at 10 µg/ml followed by a fluorescent probe.

Immunohistochemistry (Formalin/PFA-fixed paraffin-embedded sections) - Anti-Laminin alpha 4/LAMA4 antibody [3H2] (ab205568)

**Please note:** All products are "FOR RESEARCH USE ONLY. NOT FOR USE IN DIAGNOSTIC PROCEDURES"

### **Our Abpromise to you: Quality guaranteed and expert technical support**

---

- Replacement or refund for products not performing as stated on the datasheet
- Valid for 12 months from date of delivery
- Response to your inquiry within 24 hours
- We provide support in Chinese, English, French, German, Japanese and Spanish
- Extensive multi-media technical resources to help you
- We investigate all quality concerns to ensure our products perform to the highest standards

If the product does not perform as described on this datasheet, we will offer a refund or replacement. For full details of the Abpromise, please visit <https://www.abcam.com/abpromise> or contact our technical team.

### **Terms and conditions**

---

- Guarantee only valid for products bought direct from Abcam or one of our authorized distributors