

# Anti-Laminin alpha 5/LAMA5 antibody [4C7] ab17107

★★★★★ [2 Abreviews](#) [2 References](#) [2 Images](#)

### Overview

<b>Product name</b>	Anti-Laminin alpha 5/LAMA5 antibody [4C7]
<b>Description</b>	Mouse monoclonal [4C7] to Laminin alpha 5/LAMA5
<b>Host species</b>	Mouse
<b>Tested applications</b>	<b>Suitable for:</b> IHC-P
<b>Species reactivity</b>	<b>Reacts with:</b> Human <b>Does not react with:</b> Mouse, Rat
<b>Immunogen</b>	Full length native protein (purified) corresponding to Human Laminin alpha 5/LAMA5. Database link: <a href="#">O15230</a>
<b>Positive control</b>	Skin
<b>General notes</b>	<p>This antibody reacts with the terminal globular domain of the A chain. The staining with this antibody is sensitive to fixation of paraffin tissues and use of proteolytic enzymatic treatment.</p> <p>The Life Science industry has been in the grips of a reproducibility crisis for a number of years. Abcam is leading the way in addressing this with our range of recombinant monoclonal antibodies and knockout edited cell lines for gold-standard validation. Please check that this product meets your needs before purchasing.</p> <p>If you have any questions, special requirements or concerns, please send us an inquiry and/or contact our Support team ahead of purchase. Recommended alternatives for this product can be found below, along with publications, customer reviews and Q&amp;As</p>

### Properties

<b>Form</b>	Liquid
<b>Storage instructions</b>	Shipped at 4°C. Store at +4°C short term (1-2 weeks). Store at -20°C or -80°C. Avoid freeze / thaw cycle.
<b>Storage buffer</b>	pH: 7.3 Preservative: 0.05% Sodium azide Constituents: Tissue culture supernatant, 1% BSA
<b>Purity</b>	Protein G purified
<b>Primary antibody notes</b>	This antibody reacts with the terminal globular domain of the A chain. The staining with this antibody is sensitive to fixation of paraffin tissues and use of proteolytic enzymatic treatment.
<b>Clonality</b>	Monoclonal

Clone number	4C7
Isotype	IgG2a
Light chain type	kappa

## Applications

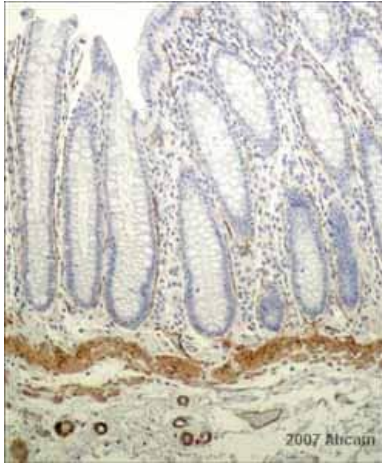
**The Abpromise guarantee** Our **Abpromise guarantee** covers the use of ab17107 in the following tested applications. The application notes include recommended starting dilutions; optimal dilutions/concentrations should be determined by the end user.

Application	Abreviews	Notes
IHC-P	★★★★★ (2)	1/5 - 1/20. Perform enzymatic antigen retrieval before commencing with IHC staining protocol.

## Target

<b>Function</b>	Binding to cells via a high affinity receptor, laminin is thought to mediate the attachment, migration and organization of cells into tissues during embryonic development by interacting with other extracellular matrix components.
<b>Tissue specificity</b>	Expressed in heart, lung, kidney, skeletal muscle, pancreas, retina and placenta. Little or no expression in brain and liver.
<b>Sequence similarities</b>	Contains 22 laminin EGF-like domains. Contains 5 laminin G-like domains. Contains 1 laminin IV type A domain. Contains 1 laminin N-terminal domain.
<b>Domain</b>	Domain G is globular and is part of the major cell-binding site located in the long arm of the laminin heterotrimer.
<b>Cellular localization</b>	Secreted, extracellular space, extracellular matrix, basement membrane. Major component.

## Images

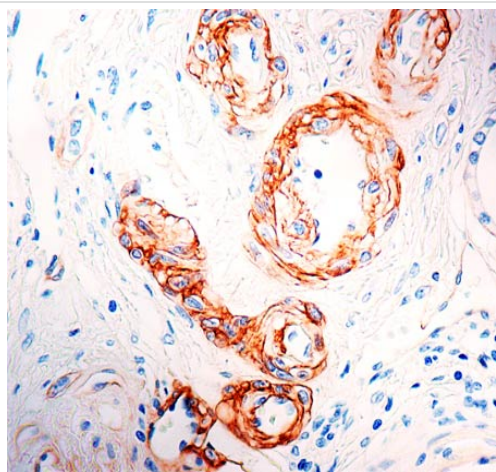


Immunohistochemistry (Formalin/PFA-fixed paraffin-embedded sections) - Anti-Laminin alpha 5/LAMA5 antibody [4C7] (ab17107)

This image is courtesy of an anonymous Abreview

ab17107 at 1/25 staining human colon tissue sections by IHC-P. The tissue was formaldehyde fixed and a heat mediated antigen retrieval step was performed prior to incubation with the antibody for 16 hours. An HRP conjugated goat anti-mouse antibody was used as the secondary.

This image was generated using the ascites version of the product.



Immunohistochemistry (Formalin/PFA-fixed paraffin-embedded sections) - Anti-Laminin alpha 5/LAMA5 antibody [4C7] (ab17107)

Immunohistochemical analysis of formalin-fixed, paraffin-embedded Human renal carcinoma tissue, staining Laminin alpha 5/LAMA5 with ab17107.

This image was generated using the ascites version of the product.

**Please note:** All products are "FOR RESEARCH USE ONLY. NOT FOR USE IN DIAGNOSTIC PROCEDURES"

### Our Abpromise to you: Quality guaranteed and expert technical support

- Replacement or refund for products not performing as stated on the datasheet
- Valid for 12 months from date of delivery
- Response to your inquiry within 24 hours
- We provide support in Chinese, English, French, German, Japanese and Spanish
- Extensive multi-media technical resources to help you
- We investigate all quality concerns to ensure our products perform to the highest standards

If the product does not perform as described on this datasheet, we will offer a refund or replacement. For full details of the Abpromise,

please visit <https://www.abcam.com/abpromise> or contact our technical team.

#### **Terms and conditions**

---

- Guarantee only valid for products bought direct from Abcam or one of our authorized distributors