



## Product datasheet

# Anti-Laminin beta 2 antibody [CL2979] ab210956

[2 References](#)   [8 Images](#)

### Overview

<b>Product name</b>	Anti-Laminin beta 2 antibody [CL2979]
<b>Description</b>	Mouse monoclonal [CL2979] to Laminin beta 2
<b>Host species</b>	Mouse
<b>Tested applications</b>	<b>Suitable for:</b> IHC-P, WB
<b>Species reactivity</b>	<b>Reacts with:</b> Human
<b>Immunogen</b>	Synthetic peptide within Human Laminin beta 2 aa 1250-1350. The exact immunogen sequence used to generate this antibody is proprietary information. If additional detail on the immunogen is needed to determine the suitability of the antibody for your needs, please <b><a href="#">contact</a></b> our Scientific Support team to discuss your requirements. Database link: <b><a href="#">P55268</a></b>
<b>Epitope</b>	ab210956 binds to an epitope located within the peptide sequence NANHALSGLERDRLA (aa 1292-1306). <div> <div>  <a href="#">Run BLAST with</a> </div> <div>  <a href="#">Run BLAST with</a> </div> </div>
<b>Positive control</b>	Recombinant protein fragment of human Laminin beta 2; human lung tissue lysate; human heart, testis, stomach, cervix, and colon tissues.
<b>General notes</b>	<p>The Life Science industry has been in the grips of a reproducibility crisis for a number of years. Abcam is leading the way in addressing this with our range of recombinant monoclonal antibodies and knockout edited cell lines for gold-standard validation. Please check that this product meets your needs before purchasing.</p> <p>If you have any questions, special requirements or concerns, please send us an inquiry and/or contact our Support team ahead of purchase. Recommended alternatives for this product can be found below, along with publications, customer reviews and Q&amp;As</p>

### Properties

<b>Form</b>	Liquid
<b>Storage instructions</b>	Shipped at 4°C. Store at +4°C short term (1-2 weeks). Upon delivery aliquot. Store at -20°C long term. Avoid freeze / thaw cycle.
<b>Storage buffer</b>	<p>pH: 7.20</p> <p>Preservative: 0.02% Sodium azide</p> <p>Constituents: 59% PBS, 40% Glycerol (glycerin, glycerine)</p>

<b>Purity</b>	Protein A purified
<b>Clonality</b>	Monoclonal
<b>Clone number</b>	CL2979
<b>Isotype</b>	IgG2a

## Applications

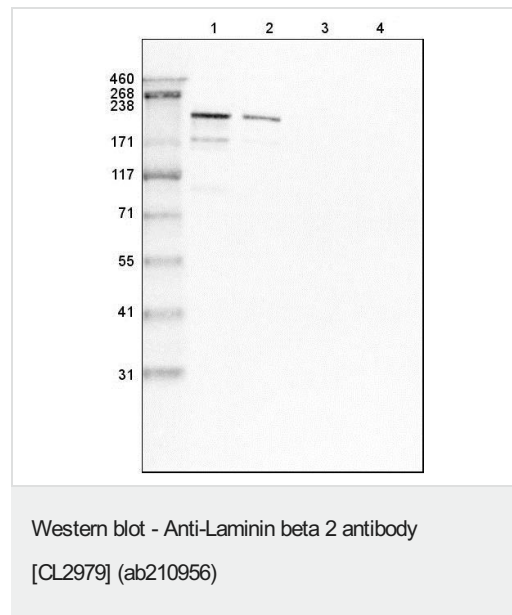
**The Abpromise guarantee** Our **Abpromise guarantee** covers the use of ab210956 in the following tested applications.

The application notes include recommended starting dilutions; optimal dilutions/concentrations should be determined by the end user.

Application	Abreviews	Notes
<b>IHC-P</b>		1/5000 - 1/10000. Perform heat mediated antigen retrieval with citrate buffer pH 6 before commencing with IHC staining protocol.
<b>WB</b>		1/500 - 1/1000. Predicted molecular weight: 196 kDa.

## Target

## Images



**All lanes :** Anti-Laminin beta 2 antibody [CL2979] (ab210956) at 1/500 dilution

**Lane 1 :** Recombinant protein fragment of human Laminin 421

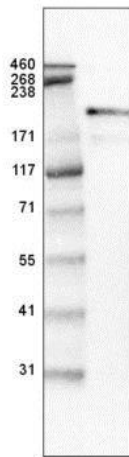
**Lane 2 :** Recombinant protein fragment of human Laminin 521

**Lane 3 :** Recombinant protein fragment of human Laminin 332

**Lane 4 :** Recombinant protein fragment of human Laminin 111

Developed using the ECL technique.

**Predicted band size:** 196 kDa

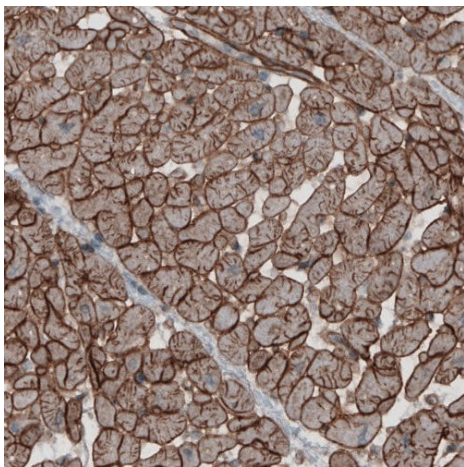


Western blot - Anti-Laminin beta 2 antibody  
[CL2979] (ab210956)

Anti-Laminin beta 2 antibody [CL2979] (ab210956) at 1/500  
dilution + Human lung tissue lysate

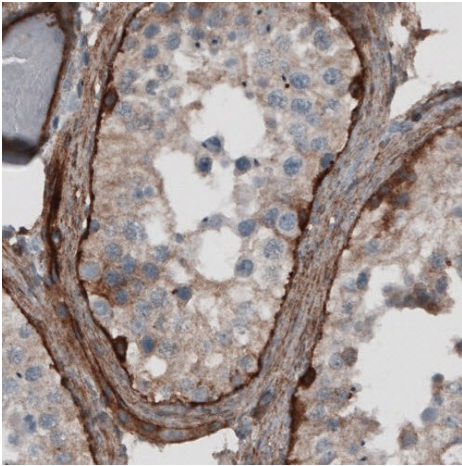
Developed using the ECL technique.

**Predicted band size:** 196 kDa



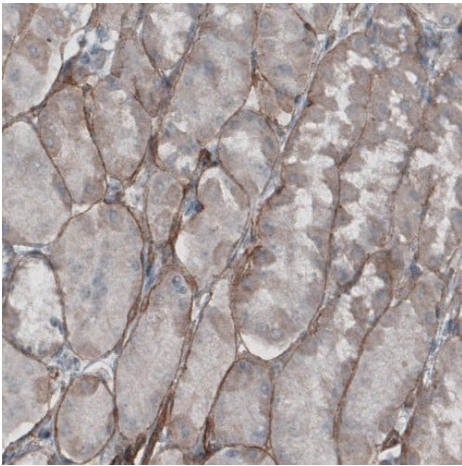
Immunohistochemistry (Formalin/PFA-fixed paraffin-  
embedded sections) - Anti-Laminin beta 2 antibody  
[CL2979] (ab210956)

Immunohistochemical analysis of paraffin-embedded human heart  
tissue, labeling Laminin beta 2 using ab210956 at a 1/5000  
dilution.



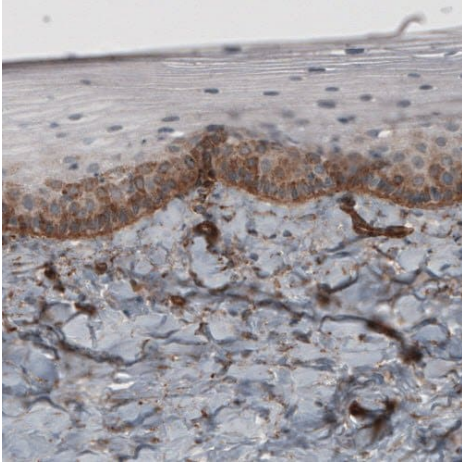
Immunohistochemistry (Formalin/PFA-fixed paraffin-embedded sections) - Anti-Laminin beta 2 antibody [CL2979] (ab210956)

Immunohistochemical analysis of paraffin-embedded human testis tissue, labeling Laminin beta 2 using ab210956 at a 1/5000 dilution.



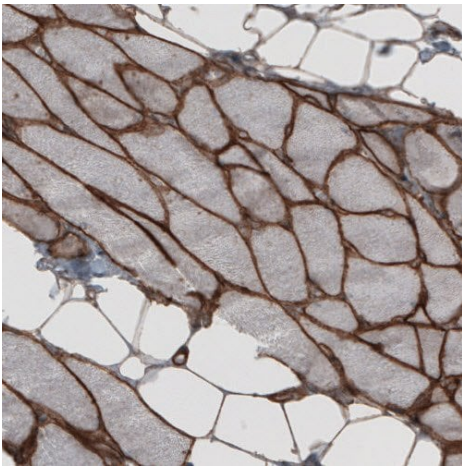
Immunohistochemistry (Formalin/PFA-fixed paraffin-embedded sections) - Anti-Laminin beta 2 antibody [CL2979] (ab210956)

Immunohistochemical analysis of paraffin-embedded human stomach tissue, labeling Laminin beta 2 using ab210956 at a 1/5000 dilution.



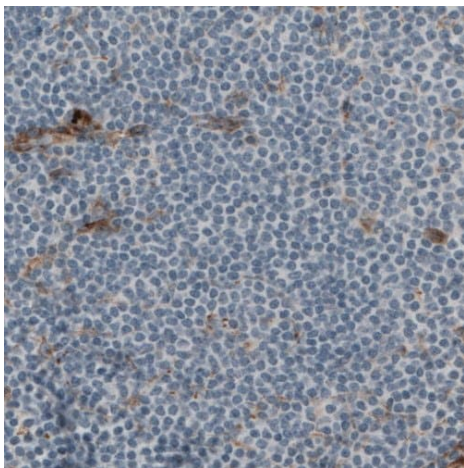
Immunohistochemical analysis of paraffin-embedded human cervix tissue, labeling Laminin beta 2 using ab210956 at a 1/5000 dilution.

Immunohistochemistry (Formalin/PFA-fixed paraffin-embedded sections) - Anti-Laminin beta 2 antibody [CL2979] (ab210956)



Immunohistochemical analysis of paraffin-embedded human colon tissue, labeling Laminin beta 2 using ab210956 at a 1/5000 dilution.

Immunohistochemistry (Formalin/PFA-fixed paraffin-embedded sections) - Anti-Laminin beta 2 antibody [CL2979] (ab210956)



Immunohistochemical analysis of paraffin-embedded human lymph node tissue (negative control), labeling Laminin beta 2 using ab210956 at a 1/5000 dilution.

Immunohistochemistry (Formalin/PFA-fixed paraffin-embedded sections) - Anti-Laminin beta 2 antibody [CL2979] (ab210956)

**Please note:** All products are "FOR RESEARCH USE ONLY. NOT FOR USE IN DIAGNOSTIC PROCEDURES"

### Our Abpromise to you: Quality guaranteed and expert technical support

---

- Replacement or refund for products not performing as stated on the datasheet
- Valid for 12 months from date of delivery
- Response to your inquiry within 24 hours
- We provide support in Chinese, English, French, German, Japanese and Spanish
- Extensive multi-media technical resources to help you
- We investigate all quality concerns to ensure our products perform to the highest standards

If the product does not perform as described on this datasheet, we will offer a refund or replacement. For full details of the Abpromise, please visit <https://www.abcam.com/abpromise> or contact our technical team.

### Terms and conditions

---

- Guarantee only valid for products bought direct from Abcam or one of our authorized distributors