

Product datasheet

Anti-Laminin gamma 1 antibody [EPR8217] ab134059

Recombinant RabMAb

[1 References](#) [3 Images](#)

Overview

Product name	Anti-Laminin gamma 1 antibody [EPR8217]
Description	Rabbit monoclonal [EPR8217] to Laminin gamma 1
Host species	Rabbit
Tested applications	Suitable for: WB, Flow Cyt (Intra) Unsuitable for: ICC/IF, IHC-P or IP
Species reactivity	Reacts with: Human
Immunogen	Synthetic peptide within Human Laminin gamma 1 aa 1-100 (N terminal). The exact sequence is proprietary.
Positive control	HeLa, JAR and A431 cell lysates; Permeabilized A431 cells.
General notes	<p>This product is a recombinant monoclonal antibody, which offers several advantages including:</p> <ul style="list-style-type: none"> - High batch-to-batch consistency and reproducibility - Improved sensitivity and specificity - Long-term security of supply - Animal-free production <p>For more information see here.</p> <p>Our RabMAb[®] technology is a patented hybridoma-based technology for making rabbit monoclonal antibodies. For details on our patents, please refer to RabMAb[®] patents.</p> <p>Mouse, Rat: We have preliminary internal testing data to indicate this antibody may not react with these species. Please contact us for more information.</p>

Properties

Form	Liquid
Storage instructions	Shipped at 4°C. Store at -20°C. Stable for 12 months at -20°C.
Storage buffer	pH: 7.20 Preservative: 0.01% Sodium azide Constituents: 9% PBS, 40% Glycerol (glycerin, glycerine), 0.05% BSA, 50% Tissue culture supernatant
Purity	Tissue culture supernatant

Clonality	Monoclonal
Clone number	EPR8217
Isotype	IgG

Applications

The Abpromise guarantee Our **Abpromise guarantee** covers the use of ab134059 in the following tested applications. The application notes include recommended starting dilutions; optimal dilutions/concentrations should be determined by the end user.

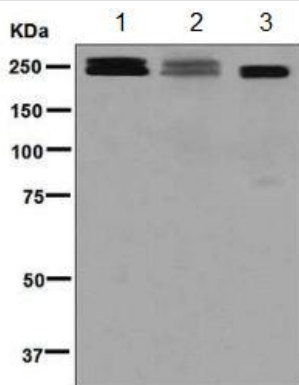
Application	Abreviews	Notes
WB		1/1000 - 1/10000. Predicted molecular weight: 178 kDa.
Flow Cyt (Intra)		1/10 - 1/100. ab172730 - Rabbit monoclonal IgG, is suitable for use as an isotype control with this antibody.

Application notes Is unsuitable for ICC/IF, IHC-P or IP.

Target

Function	Binding to cells via a high affinity receptor, laminin is thought to mediate the attachment, migration and organization of cells into tissues during embryonic development by interacting with other extracellular matrix components.
Tissue specificity	Found in the basement membranes (major component).
Sequence similarities	Contains 11 laminin EGF-like domains. Contains 1 laminin IV type A domain. Contains 1 laminin N-terminal domain.
Domain	The alpha-helical domains I and II are thought to interact with other laminin chains to form a coiled coil structure. Domains VI and IV are globular.
Cellular localization	Secreted > extracellular space > extracellular matrix > basement membrane.

Images



Western blot - Anti-Laminin gamma 1 antibody [EPR8217] (ab134059)

All lanes : Anti-Laminin gamma 1 antibody [EPR8217] (ab134059) at 1/1000 dilution

Lane 1 : HeLa cell lysate

Lane 2 : JAR cell lysate

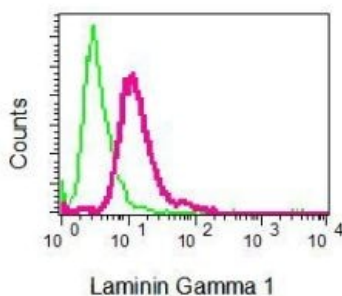
Lane 3 : A431 cell lysate

Lysates/proteins at 10 µg per lane.

Secondary

All lanes : HRP labelled goat anti-rabbit at 1/2000 dilution

Predicted band size: 178 kDa



Flow Cytometry (Intracellular) - Anti-Laminin gamma 1 antibody [EPR8217] (ab134059)

Intracellular Flow Cytometry analysis of permeabilized A431 cells labelling Laminin gamma 1 with ab134059 at 1/10 dilution (red).

Rabbit IgG negative control shown in green.

Why choose a recombinant antibody?



Research with confidence
Consistent and reproducible results



Long-term and scalable supply
Recombinant technology



Success from the first experiment
Confirmed specificity



Ethical standards compliant
Animal-free production

Anti-Laminin gamma 1 antibody [EPR8217] (ab134059)

Please note: All products are "FOR RESEARCH USE ONLY. NOT FOR USE IN DIAGNOSTIC PROCEDURES"

Our Abpromise to you: Quality guaranteed and expert technical support

- Replacement or refund for products not performing as stated on the datasheet
- Valid for 12 months from date of delivery
- Response to your inquiry within 24 hours

- We provide support in Chinese, English, French, German, Japanese and Spanish
- Extensive multi-media technical resources to help you
- We investigate all quality concerns to ensure our products perform to the highest standards

If the product does not perform as described on this datasheet, we will offer a refund or replacement. For full details of the Abpromise, please visit <https://www.abcam.com/abpromise> or contact our technical team.

Terms and conditions

- Guarantee only valid for products bought direct from Abcam or one of our authorized distributors