

Product datasheet

Anti-LAMP1 antibody ab62562

★★★★★ [1 Abreviews](#) [20 References](#) [5 Images](#)

Overview

Product name	Anti-LAMP1 antibody
Description	Rabbit polyclonal to LAMP1
Host species	Rabbit
Tested applications	Suitable for: IHC-P, ICC, WB
Species reactivity	Reacts with: Mouse, Rat, Human
Immunogen	A 15 amino acid peptide from near the centre of human LAMP1.
Positive control	ICC: Human colon cells. WB: Mouse EL4 cell lysate. IHC-P: Rat colon tissue and human placenta tissue.
General notes	<p>The Life Science industry has been in the grips of a reproducibility crisis for a number of years. Abcam is leading the way in addressing this with our range of recombinant monoclonal antibodies and knockout edited cell lines for gold-standard validation. Please check that this product meets your needs before purchasing.</p> <p>If you have any questions, special requirements or concerns, please send us an inquiry and/or contact our Support team ahead of purchase. Recommended alternatives for this product can be found below, along with publications, customer reviews and Q&As</p>

Properties

Form	Liquid
Storage instructions	Shipped at 4°C. Store at +4°C short term (1-2 weeks). Store at +4°C.
Storage buffer	pH: 7.2 Preservative: 0.02% Sodium azide Constituent: PBS
Purity	Immunogen affinity purified
Clonality	Polyclonal
Isotype	IgG

Applications

The Abpromise guarantee Our **Abpromise guarantee** covers the use of ab62562 in the following tested applications.

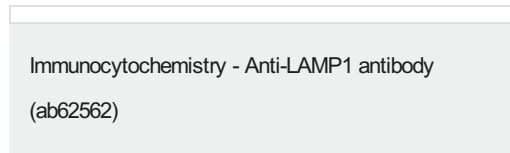
The application notes include recommended starting dilutions; optimal dilutions/concentrations should be determined by the end user.

Application	Abreviews	Notes
IHC-P		Use a concentration of 2 µg/ml.
ICC		Use a concentration of 20 µg/ml.
WB		Use a concentration of 1 - 2 µg/ml. Detects a band of approximately 110 kDa (predicted molecular weight: 45 kDa). Western blot for mouse only

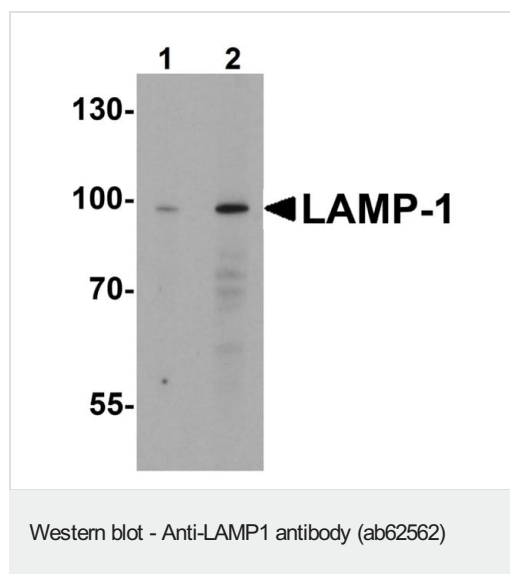
Target

Function	Presents carbohydrate ligands to selectins. Also implicated in tumor cell metastasis.
Sequence similarities	Belongs to the LAMP family.
Post-translational modifications	O- and N-glycosylated; some of the 18 N-linked glycans are polylactosaminoglycans.
Cellular localization	Cell membrane. Endosome membrane. Lysosome membrane. This protein shuttles between lysosomes, endosomes, and the plasma membrane.

Images



Immunocytochemical analysis of LAMP-1 in Human Colon cells using ab62562 at 20 ug/mL.

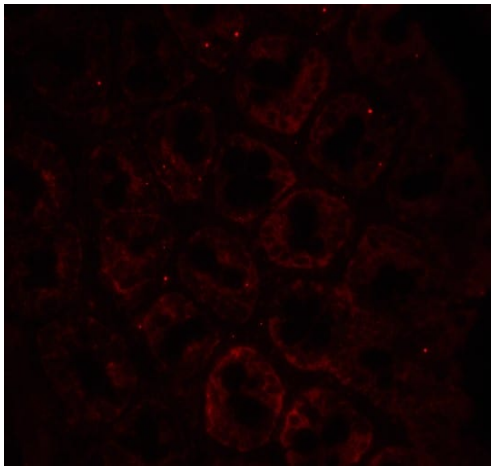


Lane 1 : Anti-LAMP1 antibody (ab62562) at 1 µg/ml

Lane 2 : Anti-LAMP1 antibody (ab62562) at 2 µg/ml

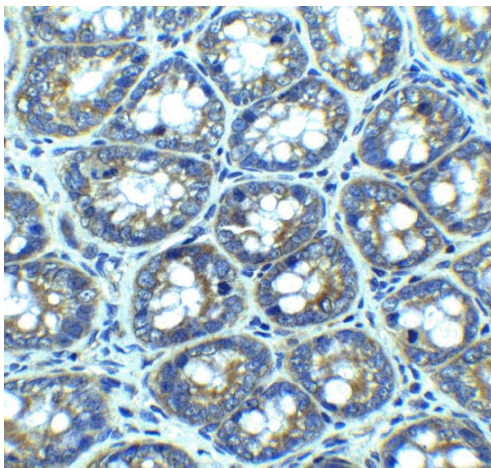
All lanes : EL4 cell lysate

Predicted band size: 45 kDa



Immunohistochemistry (Formalin/PFA-fixed paraffin-embedded sections) - Anti-LAMP1 antibody (ab62562)

Immunohistochemical analysis of LAMP-1 in rat colon tissue using ab62562 at 20µg/ml.



Immunohistochemistry (Formalin/PFA-fixed paraffin-embedded sections) - Anti-LAMP1 antibody (ab62562)

Immunohistochemistry of LAMP-1 in rat colon tissue with ab62562 at 2.5 µg/ml.

Immunohistochemistry (Formalin/PFA-fixed paraffin-embedded sections) - Anti-LAMP1 antibody (ab62562)

Ab62562 staining human normal placenta. Staining is localised to cytoplasmic and nucleus compartments.

Left panel: with primary antibody at 2 ug/ml. Right panel: isotype control.

Sections were stained using an automated system DAKO Autostainer Plus , at room temperature. Sections were rehydrated and antigen retrieved with the Dako 3-in-1 AR buffers EDTA pH 9.0 in a DAKO PT Link. Slides were peroxidase blocked in 3% H₂O₂ in methanol for 10 minutes. They were then blocked with Dako

Protein block for 10 minutes (containing casein 0.25% in PBS) then incubated with primary antibody for 20 minutes and detected with Dako Envision Flex amplification kit for 30 minutes. Colorimetric detection was completed with diaminobenzidine for 5 minutes. Slides were counterstained with Haematoxylin and coverslipped under DePeX. Please note that for manual staining we recommend to optimize the primary antibody concentration and incubation time (overnight incubation), and amplification may be requi

Please note: All products are "FOR RESEARCH USE ONLY. NOT FOR USE IN DIAGNOSTIC PROCEDURES"

Our Abpromise to you: Quality guaranteed and expert technical support

- Replacement or refund for products not performing as stated on the datasheet
- Valid for 12 months from date of delivery
- Response to your inquiry within 24 hours
- We provide support in Chinese, English, French, German, Japanese and Spanish
- Extensive multi-media technical resources to help you
- We investigate all quality concerns to ensure our products perform to the highest standards

If the product does not perform as described on this datasheet, we will offer a refund or replacement. For full details of the Abpromise, please visit <https://www.abcam.com/abpromise> or contact our technical team.

Terms and conditions

- Guarantee only valid for products bought direct from Abcam or one of our authorized distributors