

Product datasheet

Anti-LAP2 alpha antibody ab5162

★★★★★ [1 Abreviews](#) [23 References](#) [2 Images](#)

Overview

Product name	Anti-LAP2 alpha antibody
Description	Rabbit polyclonal to LAP2 alpha
Host species	Rabbit
Tested applications	Suitable for: IP, ICC/IF, WB
Species reactivity	Reacts with: Mouse, Rat, Human
Immunogen	Recombinant fragment (His-tag) corresponding to Human LAP2 alpha aa 188-693.

General notes

Lamins are type V intermediate filament proteins and are grouped into constitutively expressed B-type lamins and developmentally regulated A-type lamins. Lamin-binding proteins in the nuclear lamina and the nuclear interior include several protein families and/or types of proteins in higher eukaryotes such as the inner nuclear membrane proteins, lamin B receptor, emerin, and MAN1, three isoforms of lamina-associated polypeptide 1 (LAP 1), and several isoforms of LAP 2. Up to six LAP 2 isoforms derive from a single gene by alternative splicing in mammals and various isoforms have been described in Xenopus. The best characterized LAP2 isoforms are the inner nuclear membrane protein LAP 2 beta and the nucleoplasmic protein LAP 2 alpha, which are identical in their N-terminal 187-amino acid constant region but differ in their C termini. While LAP 2 beta binds to B-type lamins at the nuclear periphery and was suggested to regulate nuclear lamina growth, LAP 2 alpha specifically interacts with A-type lamins within the nuclear interior as part of a detergent/salt-resistant nucleoskeletal structure.

The Life Science industry has been in the grips of a reproducibility crisis for a number of years. Abcam is leading the way in addressing this with our range of recombinant monoclonal antibodies and knockout edited cell lines for gold-standard validation. Please check that this product meets your needs before purchasing.

If you have any questions, special requirements or concerns, please send us an inquiry and/or contact our Support team ahead of purchase. Recommended alternatives for this product can be found below, along with publications, customer reviews and Q&As

Properties

Form	Liquid
Storage instructions	Shipped at 4°C. Store at +4°C short term (1-2 weeks). Upon delivery aliquot. Store at -20°C or -80°C. Avoid freeze / thaw cycle.

Storage buffer	Preservative: 0.1% Sodium azide Constituents: PBS, Whole serum
Purity	Whole antiserum
Primary antibody notes	Lamins are type V intermediate filament proteins and are grouped into constitutively expressed B-type lamins and developmentally regulated A-type lamins. Lamin-binding proteins in the nuclear lamina and the nuclear interior include several protein families and/or types of proteins in higher eukaryotes such as the inner nuclear membrane proteins, lamin B receptor, emerin, and MAN1, three isoforms of lamina-associated polypeptide 1 (LAP 1), and several isoforms of LAP 2. Up to six LAP 2 isoforms derive from a single gene by alternative splicing in mammals and various isoforms have been described in Xenopus. The best characterized LAP2 isoforms are the inner nuclear membrane protein LAP 2 beta and the nucleoplasmic protein LAP 2 alpha, which are identical in their N-terminal 187-amino acid constant region but differ in their C termini. While LAP 2 beta binds to B-type lamins at the nuclear periphery and was suggested to regulate nuclear lamina growth, LAP 2 alpha specifically interacts with A-type lamins within the nuclear interior as part of a detergent/salt-resistant nucleoskeletal structure.
Clonality	Polyclonal
Isotype	IgG

Applications

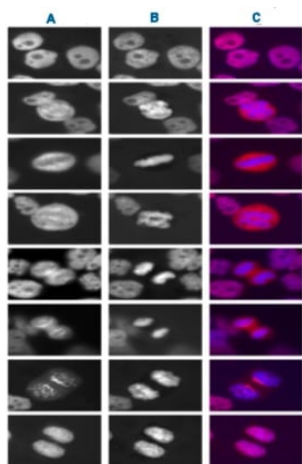
The Abpromise guarantee Our **Abpromise guarantee** covers the use of ab5162 in the following tested applications. The application notes include recommended starting dilutions; optimal dilutions/concentrations should be determined by the end user.

Application	Abreviews	Notes
IP		Use at an assay dependent concentration.
ICC/IF		Use at an assay dependent concentration.
WB	★★★★★ (1)	1/2500. Detects a band of approximately 83 kDa.

Target

Relevance	Lamins are type V intermediate filament proteins and are grouped into constitutively expressed B-type lamins and developmentally regulated A-type lamins. Lamin-binding proteins in the nuclear lamina and the nuclear interior include several protein families and/or types of proteins in higher eukaryotes such as the inner nuclear membrane proteins, lamin B receptor, emerin, MAN1, three isoforms of lamina-associated polypeptide 1 (LAP 1), and several isoforms of LAP 2. Up to six LAP 2 isoforms derive from a single gene by alternative splicing in mammals and various isoforms have been described in Xenopus. The best characterized LAP2 isoforms are the inner nuclear membrane protein LAP 2 beta and the nucleoplasmic protein LAP 2 alpha, which are identical in their N-terminal 187-amino acid constant region but differ in their C termini. LAP 2 alpha specifically interacts with A-type lamins within the nuclear interior as part of a detergent- and salt-resistant nucleoskeletal structure.
Cellular localization	Nuclear

Images



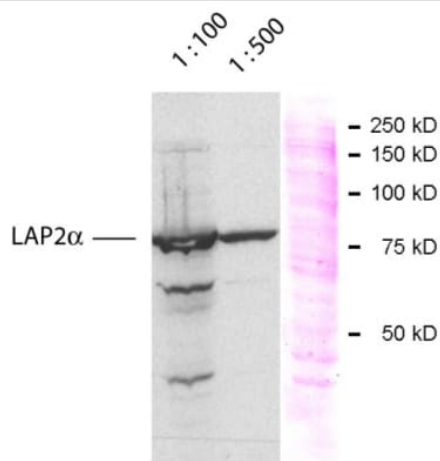
Immunocytochemistry/ Immunofluorescence - Anti-LAP2 alpha antibody (ab5162)

ab5162 at a dilution of 1/250 staining LAP 2 alpha in HeLa cells by immunofluorescence.

A = ab5162, 1/250

B = DNA

C = A and B merged



Western blot - Anti-LAP2 alpha antibody (ab5162)

ab5162 at dilutions of 1/100 and 1/500 staining approximately 83 kDa LAP 2 alpha in HeLa cell extracts by Western blot (ECL).

ab5162 at dilutions of 1/100 and 1/500 staining approximately 83 kDa LAP 2 alpha in HeLa cell extracts by Western blot (ECL).

Please note: All products are "FOR RESEARCH USE ONLY. NOT FOR USE IN DIAGNOSTIC PROCEDURES"

Our Abpromise to you: Quality guaranteed and expert technical support

- Replacement or refund for products not performing as stated on the datasheet
- Valid for 12 months from date of delivery
- Response to your inquiry within 24 hours
- We provide support in Chinese, English, French, German, Japanese and Spanish
- Extensive multi-media technical resources to help you
- We investigate all quality concerns to ensure our products perform to the highest standards

If the product does not perform as described on this datasheet, we will offer a refund or replacement. For full details of the Abpromise, please visit <https://www.abcam.com/abpromise> or contact our technical team.

Terms and conditions

- Guarantee only valid for products bought direct from Abcam or one of our authorized distributors