

Product datasheet

Anti-LAS1L antibody [EPR8988(B)] ab140656

Recombinant RabMAb

[2 References](#) [3 Images](#)

Overview

Product name	Anti-LAS1L antibody [EPR8988(B)]
Description	Rabbit monoclonal [EPR8988(B)] to LAS1L
Host species	Rabbit
Tested applications	Suitable for: WB, ICC/IF Unsuitable for: Flow Cyt or IHC-P
Species reactivity	Reacts with: Human
Immunogen	Synthetic peptide within Human LAS1L aa 200-300. The exact sequence is proprietary. Database link: Q9Y4W2
Positive control	293T, HeLa and PC-3 cell lysates; HeLa cells.
General notes	<p>This product is a recombinant monoclonal antibody, which offers several advantages including:</p> <ul style="list-style-type: none">- High batch-to-batch consistency and reproducibility- Improved sensitivity and specificity- Long-term security of supply- Animal-free production <p>For more information see here.</p> <p>Our RabMAb[®] technology is a patented hybridoma-based technology for making rabbit monoclonal antibodies. For details on our patents, please refer to RabMAb[®] patents.</p> <p>Mouse, Rat: We have preliminary internal testing data to indicate this antibody may not react with these species. Please contact us for more information.</p>

Properties

Form	Liquid
Storage instructions	Shipped at 4°C. Upon delivery aliquot and store at -20°C. Avoid freeze / thaw cycles.
Storage buffer	pH: 7.2 Preservative: 0.01% Sodium azide Constituents: 9% PBS, 40% Glycerol (glycerin, glycerine), 0.05% BSA, 50% Tissue culture supernatant
Purity	Tissue culture supernatant

Clonality	Monoclonal
Clone number	EPR8988(B)
Isotype	IgG

Applications

The Abpromise guarantee Our **Abpromise guarantee** covers the use of ab140656 in the following tested applications. The application notes include recommended starting dilutions; optimal dilutions/concentrations should be determined by the end user.

Application	Abreviews	Notes
WB		1/1000 - 1/10000. Detects a band of approximately 83 kDa (predicted molecular weight: 83 kDa).
ICC/IF		1/250 - 1/500.

Application notes Is unsuitable for Flow Cyt or IHC-P.

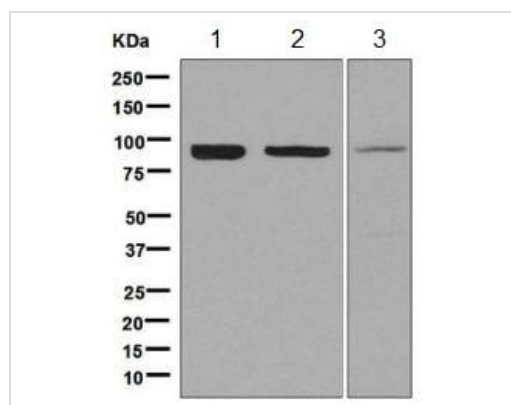
Target

Function Involved in the biogenesis of the 60S ribosomal subunit. Required for maturation of the 28S rRNA. Functions as a component of the Five Friends of Methylated CHTOP (5FMC) complex; the 5FMC complex is recruited to ZNF148 by methylated CHTOP, leading to desumoylation of ZNF148 and subsequent transactivation of ZNF148 target genes.

Sequence similarities Belongs to the LAS1 family.

Cellular localization Nucleus > nucleolus. Nucleus > nucleoplasm. Cytoplasm. Mainly found in the nucleoplasm, with low levels detected in the cytoplasmic and chromatin fractions (By similarity). Localizes mainly to the granular component, the region implicated in the later steps of rRNA processing and subunit assembly and export.

Images



Western blot - Anti-LAS1L antibody [EPR8988(B)] (ab140656)

All lanes : Anti-LAS1L antibody [EPR8988(B)] (ab140656) at 1/1000 dilution

Lane 1 : 293T cell lysate

Lane 2 : HeLa cell lysate

Lane 3 : PC-3 cell lysate

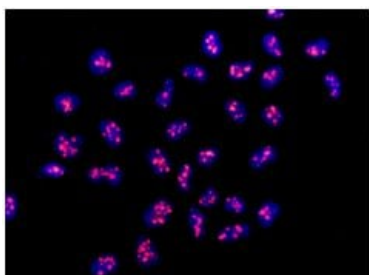
Lysates/proteins at 10 µg per lane.

Secondary

All lanes : Goat anti-rabbit HRP at 1/2000 dilution

Predicted band size: 83 kDa

Observed band size: 83 kDa



Immunofluorescent analysis of HeLa cells labelling LAS1L with ab140656 at 1/250 dilution.

Immunocytochemistry/ Immunofluorescence - Anti-LAS1L antibody [EPR8988(B)] (ab140656)

Why choose a recombinant antibody?



Research with confidence
Consistent and reproducible results



Long-term and scalable supply
Recombinant technology



Success from the first experiment
Confirmed specificity



Ethical standards compliant
Animal-free production

Anti-LAS1L antibody [EPR8988(B)] (ab140656)

Please note: All products are "FOR RESEARCH USE ONLY. NOT FOR USE IN DIAGNOSTIC PROCEDURES"

Our Abpromise to you: Quality guaranteed and expert technical support

- Replacement or refund for products not performing as stated on the datasheet
- Valid for 12 months from date of delivery
- Response to your inquiry within 24 hours
- We provide support in Chinese, English, French, German, Japanese and Spanish
- Extensive multi-media technical resources to help you
- We investigate all quality concerns to ensure our products perform to the highest standards

If the product does not perform as described on this datasheet, we will offer a refund or replacement. For full details of the Abpromise, please visit <https://www.abcam.com/abpromise> or contact our technical team.

Terms and conditions

- Guarantee only valid for products bought direct from Abcam or one of our authorized distributors