

## Product datasheet

### Anti-LC3C antibody [EPR8077] $\alpha$ b150367

Recombinant RabMAb

[2 References](#) [2 Images](#)

#### Overview

Product name	Anti-LC3C antibody [EPR8077]
Description	Rabbit monoclonal [EPR8077] to LC3C
Host species	Rabbit
Tested applications	<b>Suitable for:</b> WB <b>Unsuitable for:</b> IP
Species reactivity	<b>Reacts with:</b> Human
Immunogen	Synthetic peptide within Human LC3C aa 100-200. The exact sequence is proprietary.
Positive control	LC3C transfected 293T cell lysates
General notes	<p>This product is a recombinant monoclonal antibody, which offers several advantages including:</p> <ul style="list-style-type: none"> <li>- High batch-to-batch consistency and reproducibility</li> <li>- Improved sensitivity and specificity</li> <li>- Long-term security of supply</li> <li>- Animal-free production</li> </ul> <p>For more information <a href="#">see here</a>.</p> <p>Our RabMAb<sup>®</sup> technology is a patented hybridoma-based technology for making rabbit monoclonal antibodies. For details on our patents, please refer to <a href="#">RabMAb<sup>®</sup> patents</a>.</p> <p>Mouse, Rat: We have preliminary internal testing data to indicate this antibody may not react with these species. Please contact us for more information.</p>

#### Properties

Form	Liquid
Storage instructions	Shipped at 4°C. Upon delivery aliquot and store at -20°C. Avoid freeze / thaw cycles.
Storage buffer	<p>pH: 7.2</p> <p>Preservative: 0.01% Sodium azide</p> <p>Constituents: 9% PBS, 40% Glycerol (glycerin, glycerine), 0.05% BSA, 50% Tissue culture supernatant</p>
Purity	Protein A purified
Clonality	Monoclonal

**Clone number**                      EPR8077

**Isotype**                              IgG

## Applications

**The Abpromise guarantee**              Our **Abpromise guarantee** covers the use of ab150367 in the following tested applications. The application notes include recommended starting dilutions; optimal dilutions/concentrations should be determined by the end user.

Application	Abreviews	Notes
WB		1/10000 - 1/50000. Predicted molecular weight: 17 kDa.

**Application notes**                      Is unsuitable for IP.

## Target

**Function**                                      Probably involved in formation of autophagosomal vacuoles (autophagosomes).

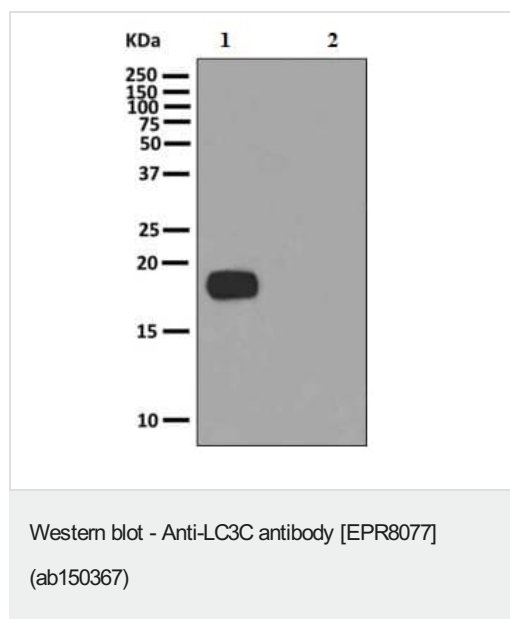
**Tissue specificity**                          Most abundant in placenta, lung and ovary.

**Sequence similarities**                      Belongs to the MAP1 LC3 family.

**Post-translational modifications**              The precursor molecule is cleaved by APG4B/ATG4B to form the cytosolic form, LC3-I. This is activated by APG7L/ATG7, transferred to ATG3 and conjugated to phospholipid to form the membrane-bound form, LC3-II.

**Cellular localization**                          Cytoplasm > cytoskeleton. Endomembrane system. Cytoplasmic vesicle > autophagosome membrane. LC3-II binds to the autophagic membranes.

## Images



**All lanes** : Anti-LC3C antibody [EPR8077] (ab150367) at 1/10000 dilution

**Lane 1** : LC3C transfected 293T cell lysates

**Lane 2** : Mock-transfected 293T cell lysates

Lysates/proteins at 10 µg per lane.

### Secondary

**All lanes** : HRP labelled goat anti-rabbit at 1/2000 dilution

**Predicted band size:** 17 kDa

### Why choose a recombinant antibody?



**Research with confidence**  
Consistent and reproducible results



**Long-term and scalable supply**  
Recombinant technology



**Success from the first experiment**  
Confirmed specificity



**Ethical standards compliant**  
Animal-free production

Anti-LC3C antibody [EPR8077] (ab150367)

**Please note:** All products are "FOR RESEARCH USE ONLY. NOT FOR USE IN DIAGNOSTIC PROCEDURES"

### Our Abpromise to you: Quality guaranteed and expert technical support

---

- Replacement or refund for products not performing as stated on the datasheet
- Valid for 12 months from date of delivery
- Response to your inquiry within 24 hours
- We provide support in Chinese, English, French, German, Japanese and Spanish
- Extensive multi-media technical resources to help you
- We investigate all quality concerns to ensure our products perform to the highest standards

If the product does not perform as described on this datasheet, we will offer a refund or replacement. For full details of the Abpromise, please visit <https://www.abcam.com/abpromise> or contact our technical team.

### Terms and conditions

---

- Guarantee only valid for products bought direct from Abcam or one of our authorized distributors