



Anti-LCN1 antibody ab232995

4 Images

Overview

Product name	Anti-LCN1 antibody
Description	Rabbit polyclonal to LCN1
Host species	Rabbit
Tested applications	Suitable for: WB
Species reactivity	Reacts with: Rat, Human
Immunogen	Recombinant fragment corresponding to Human LCN1 aa 1 to the C-terminus. Database link: P31025
	<div>  Run BLAST with </div> <div>  Run BLAST with </div>
Positive control	WB: Recombinant human LCN1 protein; Rat tongue tissue lysate, Human saliva and urine.
General notes	<p>The Life Science industry has been in the grips of a reproducibility crisis for a number of years. Abcam is leading the way in addressing this with our range of recombinant monoclonal antibodies and knockout edited cell lines for gold-standard validation. Please check that this product meets your needs before purchasing.</p> <p>If you have any questions, special requirements or concerns, please send us an inquiry and/or contact our Support team ahead of purchase. Recommended alternatives for this product can be found below, along with publications, customer reviews and Q&As</p>

Properties

Form	Liquid
Storage instructions	Shipped at 4°C. Store at +4°C short term (1-2 weeks). Upon delivery aliquot. Store at -20°C long term. Avoid freeze / thaw cycle.
Storage buffer	pH: 7.40 Preservative: 0.011% Proclin 300 Constituents: 55.77% Glycerol (glycerin, glycerine), 44.219% PBS
Purity	Immunogen affinity purified
Purification notes	Antigen-specific affinity chromatography followed by Protein A affinity chromatography.
Clonality	Polyclonal
Isotype	IgG

Applications

The Abpromise guarantee

Our **Abpromise guarantee** covers the use of ab232995 in the following tested applications.

The application notes include recommended starting dilutions; optimal dilutions/concentrations should be determined by the end user.

Application	Abreviews	Notes
WB		Use a concentration of 0.2 - 2 µg/ml. Predicted molecular weight: 19 kDa.

Target

Function

Could play a role in taste reception. Could be necessary for the concentration and delivery of sapid molecules in the gustatory system. Can bind various ligands, with chemical structures ranging from lipids and retinoids to the macrocyclic antibiotic rifampicin and even to microbial siderophores. Exhibits an extremely wide ligand pocket.

Tissue specificity

Mainly expressed in lachrymal and salivary glands. Also expressed in the prostate.

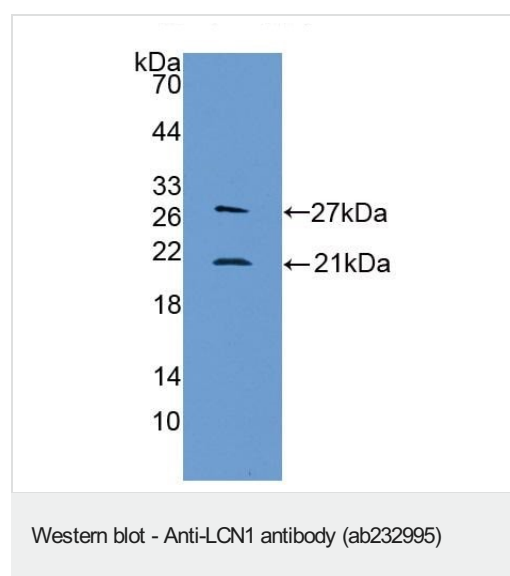
Sequence similarities

Belongs to the calycin superfamily. Lipocalin family.

Cellular localization

Secreted.

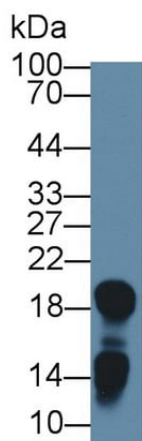
Images



Anti-LCN1 antibody (ab232995) at 1 µg/ml + Recombinant human LCN1

Developed using the ECL technique.

Predicted band size: 19 kDa

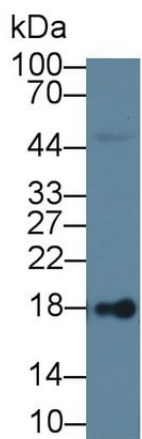


Western blot - Anti-LCN1 antibody (ab232995)

Anti-LCN1 antibody (ab232995) at 1 µg/ml + Human saliva

Developed using the ECL technique.

Predicted band size: 19 kDa

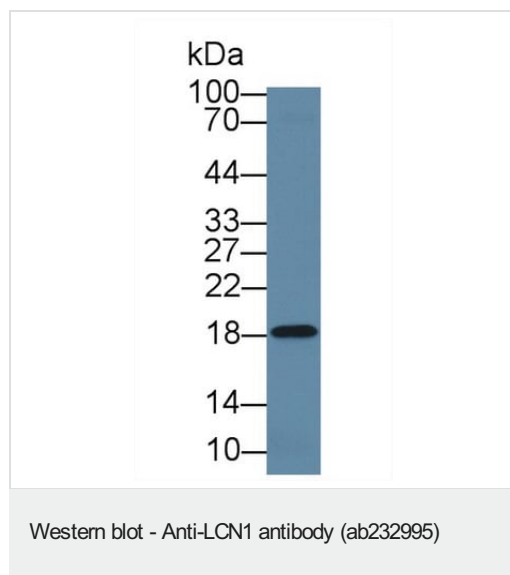


Western blot - Anti-LCN1 antibody (ab232995)

Anti-LCN1 antibody (ab232995) at 1 µg/ml + Human urine

Developed using the ECL technique.

Predicted band size: 19 kDa



Anti-LCN1 antibody (ab232995) at 1 µg/ml + Rat tongue tissue lysate

Developed using the ECL technique.

Predicted band size: 19 kDa

Please note: All products are "FOR RESEARCH USE ONLY. NOT FOR USE IN DIAGNOSTIC PROCEDURES"

Our Abpromise to you: Quality guaranteed and expert technical support

- Replacement or refund for products not performing as stated on the datasheet
- Valid for 12 months from date of delivery
- Response to your inquiry within 24 hours
- We provide support in Chinese, English, French, German, Japanese and Spanish
- Extensive multi-media technical resources to help you
- We investigate all quality concerns to ensure our products perform to the highest standards

If the product does not perform as described on this datasheet, we will offer a refund or replacement. For full details of the Abpromise, please visit <https://www.abcam.com/abpromise> or contact our technical team.

Terms and conditions

- Guarantee only valid for products bought direct from Abcam or one of our authorized distributors