


## Product datasheet

### Anti-LDB3 antibody [EPR10126] ab171936

Recombinant RabMAb

2 Images

#### Overview

Product name	Anti-LDB3 antibody [EPR10126]
Description	Rabbit monoclonal [EPR10126] to LDB3
Host species	Rabbit
Tested applications	<b>Suitable for:</b> WB <b>Unsuitable for:</b> Flow Cyt, ICC/IF, IHC or IP
Species reactivity	<b>Reacts with:</b> Human <b>Predicted to work with:</b> Mouse, Rat 
Immunogen	Synthetic peptide within Human LDB3 aa 50-150 (N terminal) (Cysteine residue). The exact sequence is proprietary. Database link: <a href="#">O75112</a>
Positive control	A431 and HT 1080 cell line lysates
General notes	This product is a recombinant monoclonal antibody, which offers several advantages including: <ul style="list-style-type: none"> <li>- High batch-to-batch consistency and reproducibility</li> <li>- Improved sensitivity and specificity</li> <li>- Long-term security of supply</li> <li>- Animal-free production</li> </ul> For more information <a href="#">see here</a> . Our RabMAb <sup>®</sup> technology is a patented hybridoma-based technology for making rabbit monoclonal antibodies. For details on our patents, please refer to <a href="#">RabMAb<sup>®</sup> patents</a> .

#### Properties

Form	Liquid
Storage instructions	Shipped at 4°C. Store at +4°C short term (1-2 weeks). Upon delivery aliquot. Store at -20°C long term. Avoid freeze / thaw cycle.
Storage buffer	pH: 7.20 Preservative: 0.01% Sodium azide Constituents: 9% PBS, 40% Glycerol (glycerin, glycerine), 0.05% BSA, 50% Tissue culture supernatant
Purity	Protein A purified

<b>Clonality</b>	Monoclonal
<b>Clone number</b>	EPR10126
<b>Isotype</b>	IgG

## Applications

**The Abpromise guarantee** Our **Abpromise guarantee** covers the use of ab171936 in the following tested applications. The application notes include recommended starting dilutions; optimal dilutions/concentrations should be determined by the end user.

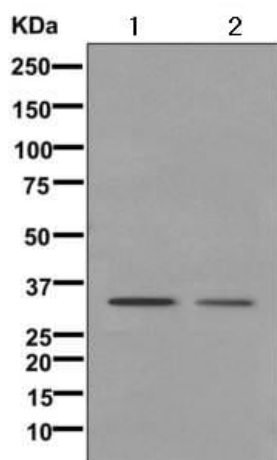
Application	Abreviews	Notes
<b>WB</b>		1/1000 - 1/5000. Predicted molecular weight: 77 kDa.

**Application notes** Is unsuitable for Flow Cyt, ICC/IF, IHC or IP.

## Target

<b>Function</b>	May function as an adapter in striated muscle to couple protein kinase C-mediated signaling via its LIM domains to the cytoskeleton.
<b>Tissue specificity</b>	Expressed primarily in skeletal muscle and to a lesser extent in heart. Also detected in brain and placenta.
<b>Involvement in disease</b>	<p>Defects in LDB3 are the cause of cardiomyopathy dilated type 1C (CMD1C) [MIM:601493]. Dilated cardiomyopathy is a disorder characterized by ventricular dilation and impaired systolic function, resulting in congestive heart failure and arrhythmia. Patients are at risk of premature death.</p> <p>Defects in LDB3 are the cause of left ventricular non-compaction type 3 (LVNC3) [MIM:601493]. Left ventricular non-compaction is characterized by numerous prominent trabeculations and deep intertrabecular recesses in hypertrophied and hypokinetic segments of the left ventricle.</p> <p>Defects in LDB3 are the cause of myopathy myofibrillar ZASP-related (MFM-ZASP) [MIM:609452]. A neuromuscular disorder characterized by distal and proximal muscle weakness with signs of cardiomyopathy and neuropathy.</p>
<b>Sequence similarities</b>	<p>Contains 3 LIM zinc-binding domains.</p> <p>Contains 1 PDZ (DHR) domain.</p>
<b>Cellular localization</b>	<p>Cytoplasm &gt; perinuclear region. Cell projection &gt; pseudopodium. Cytoplasm &gt; cytoskeleton. Cytoplasm &gt; myofibril &gt; sarcomere &gt; Z line. Localized to the cytoplasm around nuclei and pseudopodia of undifferentiated cells and detected throughout the myotubes of differentiated cells. Colocalizes with ACTN2 at the Z-lines.</p>

## Images



Western blot - Anti-LDB3 antibody [EPR10126]  
(ab171936)

**All lanes** : Anti-LDB3 antibody [EPR10126] (ab171936) at 1/1000 dilution

**Lane 1** : A431 cell line lysate

**Lane 2** : HT 1080 cell line lysate

Lysates/proteins at 10 µg per lane.

#### Secondary

**All lanes** : Goat anti-rabbit HRP conjugated antibody at 1/500 dilution

Developed using the ECL technique.

**Predicted band size:** 77 kDa

#### Why choose a recombinant antibody?



**Research with confidence**  
Consistent and reproducible results



**Long-term and scalable supply**  
Recombinant technology



**Success from the first experiment**  
Confirmed specificity



**Ethical standards compliant**  
Animal-free production

Anti-LDB3 antibody [EPR10126] (ab171936)

**Please note:** All products are "FOR RESEARCH USE ONLY. NOT FOR USE IN DIAGNOSTIC PROCEDURES"

#### Our Abpromise to you: Quality guaranteed and expert technical support

- Replacement or refund for products not performing as stated on the datasheet
- Valid for 12 months from date of delivery
- Response to your inquiry within 24 hours

- We provide support in Chinese, English, French, German, Japanese and Spanish
- Extensive multi-media technical resources to help you
- We investigate all quality concerns to ensure our products perform to the highest standards

If the product does not perform as described on this datasheet, we will offer a refund or replacement. For full details of the Abpromise, please visit <https://www.abcam.com/abpromise> or contact our technical team.

#### **Terms and conditions**

---

- Guarantee only valid for products bought direct from Abcam or one of our authorized distributors