


Product datasheet

Anti-LDLC antibody [EPR10896] ab167416

Recombinant RabMAb

4 Images

Overview

Product name	Anti-LDLC antibody [EPR10896]
Description	Rabbit monoclonal [EPR10896] to LDLC
Host species	Rabbit
Tested applications	Suitable for: WB, IHC-P Unsuitable for: ICC/IF or IP
Species reactivity	Reacts with: Human Predicted to work with: Mouse, Rat 
Immunogen	Synthetic peptide. This information is proprietary to Abcam and/or its suppliers.
Positive control	Fetal lung and brain lysates, HeLa and HepG2 cell lysates. Paraffin-embedded Human kidney and pancreas tissue.
General notes	<p>This product is a recombinant monoclonal antibody, which offers several advantages including:</p> <ul style="list-style-type: none">- High batch-to-batch consistency and reproducibility- Improved sensitivity and specificity- Long-term security of supply- Animal-free production <p>For more information see here.</p> <p>Our RabMAb[®] technology is a patented hybridoma-based technology for making rabbit monoclonal antibodies. For details on our patents, please refer to RabMAb[®] patents.</p>

Properties

Form	Liquid
Storage instructions	Shipped at 4°C. Upon delivery aliquot and store at -20°C. Avoid freeze / thaw cycles.
Storage buffer	pH: 7.2 Preservative: 0.01% Sodium azide Constituents: 59% PBS, 40% Glycerol (glycerin, glycerine), 0.5% BSA
Purity	Protein A purified
Clonality	Monoclonal
Clone number	EPR10896

Isotype

IgG

Applications

The Abpromise guarantee

Our **Abpromise guarantee** covers the use of ab167416 in the following tested applications.

The application notes include recommended starting dilutions; optimal dilutions/concentrations should be determined by the end user.

Application	Abreviews	Notes
WB		1/1000 - 1/5000. Predicted molecular weight: 83 kDa.
IHC-P		1/50 - 1/100. Perform heat mediated antigen retrieval with citrate buffer pH 6 before commencing with IHC staining protocol.

Application notes

Is unsuitable for ICC/IF or IP.

Target

Function

Required for normal Golgi morphology and function.

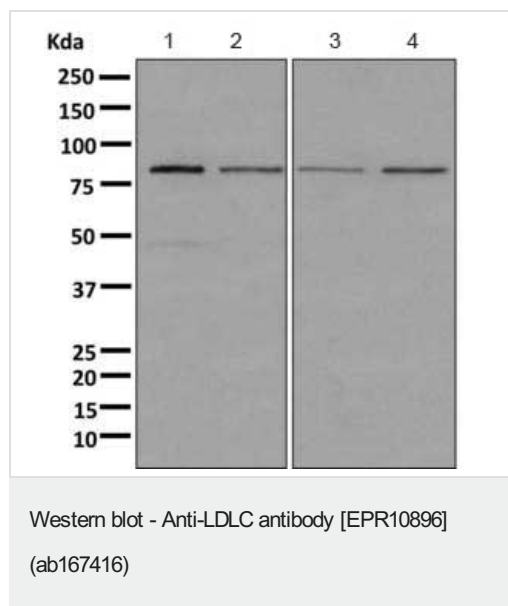
Sequence similarities

Belongs to the COG2 family.

Cellular localization

Golgi apparatus membrane.

Images



All lanes : Anti-LDLC antibody [EPR10896] (ab167416) at 1/1000 dilution

Lane 1 : Fetal lung tissue lysate

Lane 2 : Fetal brain tissue lysate

Lane 3 : HeLa cell lysate

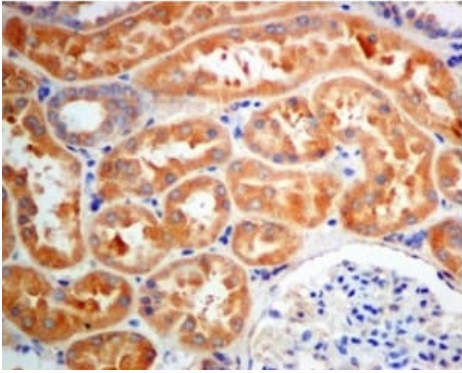
Lane 4 : HepG2 cell lysate

Lysates/proteins at 10 µg per lane.

Secondary

All lanes : Goat anti-rabbit HRP antibody at 1/2000 dilution

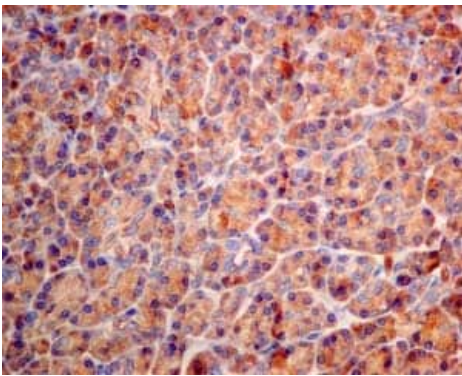
Predicted band size: 83 kDa



Immunohistochemistry (Formalin/PFA-fixed paraffin-embedded sections) - Anti-LDLC antibody [EPR10896] (ab167416)

Immunohistochemical analysis of paraffin-embedded Human kidney tissue labeling LDLC with ab167416 at 1/50 dilution.

Perform heat mediated antigen retrieval with citrate buffer pH 6 before commencing with IHC staining protocol.







Immunohistochemistry (Formalin/PFA-fixed paraffin-embedded sections) - Anti-LDLC antibody [EPR10896] (ab167416)

Immunohistochemical analysis of paraffin-embedded Human pancreas tissue labeling LDLC with ab167416 at 1/50 dilution.

Perform heat mediated antigen retrieval with citrate buffer pH 6 before commencing with IHC staining protocol.

Why choose a recombinant antibody?

 <p>Research with confidence Consistent and reproducible results</p>	 <p>Long-term and scalable supply Recombinant technology</p>
 <p>Success from the first experiment Confirmed specificity</p>	 <p>Ethical standards compliant Animal-free production</p>

Anti-LDLC antibody [EPR10896] (ab167416)

Please note: All products are "FOR RESEARCH USE ONLY. NOT FOR USE IN DIAGNOSTIC PROCEDURES"

Our Abpromise to you: Quality guaranteed and expert technical support

- Replacement or refund for products not performing as stated on the datasheet
- Valid for 12 months from date of delivery
- Response to your inquiry within 24 hours
- We provide support in Chinese, English, French, German, Japanese and Spanish
- Extensive multi-media technical resources to help you
- We investigate all quality concerns to ensure our products perform to the highest standards

If the product does not perform as described on this datasheet, we will offer a refund or replacement. For full details of the Abpromise, please visit <https://www.abcam.com/abpromise> or contact our technical team.

Terms and conditions

- Guarantee only valid for products bought direct from Abcam or one of our authorized distributors