

Product datasheet

Anti-LECT2 antibody [OT12A11] ab119429

[2 References](#) [8 Images](#)

Overview

Product name	Anti-LECT2 antibody [OT12A11]
Description	Mouse monoclonal [OT12A11] to LECT2
Host species	Mouse
Tested applications	Suitable for: WB, IHC-P
Species reactivity	Reacts with: Human
Immunogen	Recombinant full length protein corresponding to Human LECT2 aa 1-200. Produced in E.coli (NP_002293). aa 1-18 are the signal peptide, immunogen is to the full length mature chain. Database link: O14960 Run BLAST with Run BLAST with
Positive control	WB: HEK293T cell lysate transfected with pCMV6-ENTRY LECT2 cDNA. IHC-P: Human breast, Kidney, Lung carcinoma, Ovary adenocarcinoma, Pancreas, Endometrium adenocarcinoma and Tonsil tissues.
General notes	<p>The clone number has been updated from 2A11 to OT12A11, both clone numbers name the same clone.</p> <p>The Life Science industry has been in the grips of a reproducibility crisis for a number of years. Abcam is leading the way in addressing this with our range of recombinant monoclonal antibodies and knockout edited cell lines for gold-standard validation. Please check that this product meets your needs before purchasing.</p> <p>If you have any questions, special requirements or concerns, please send us an inquiry and/or contact our Support team ahead of purchase. Recommended alternatives for this product can be found below, along with publications, customer reviews and Q&As</p>

Properties

Form	Liquid
Storage instructions	Shipped at 4°C. Store at +4°C short term (1-2 weeks). Upon delivery aliquot. Store at -20°C long term. Avoid freeze / thaw cycle.
Storage buffer	pH: 7.30 Preservative: 0.02% Sodium azide Constituents: PBS, 1% BSA, 50% Glycerol
Purity	Affinity purified

Purification notes	Purified from cell culture supernatant by affinity chromatography
Clonality	Monoclonal
Clone number	OT12A11
Isotype	IgG1

Applications

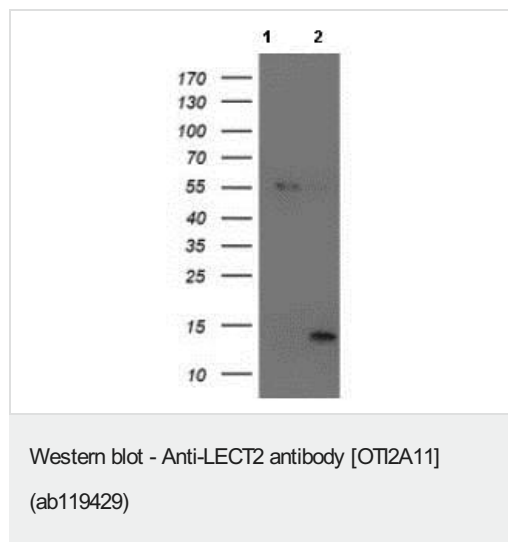
The Abpromise guarantee Our **Abpromise guarantee** covers the use of ab119429 in the following tested applications. The application notes include recommended starting dilutions; optimal dilutions/concentrations should be determined by the end user.

Application	Abreviews	Notes
WB		1/500. Predicted molecular weight: 16 kDa.
IHC-P		1/150. Perform heat mediated antigen retrieval with citrate buffer pH 6 before commencing with IHC staining protocol.

Target

Function	Has a neutrophil chemotactic activity. Also a positive regulator of chondrocyte proliferation.
Tissue specificity	Highly expressed in adult and fetal liver and weakly in testis. Not expressed in bone marrow.
Sequence similarities	Belongs to the LECT2/MM-1 family.
Cellular localization	Cytoplasm. Secreted.

Images



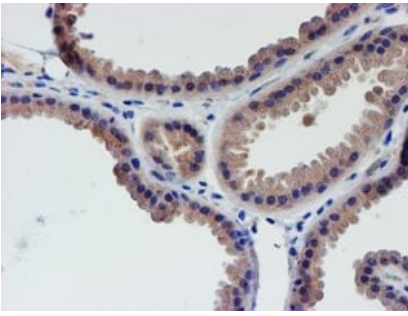
All lanes : Anti-LECT2 antibody [OT12A11] (ab119429) at 1/500 dilution

Lane 1 : HEK-293T (human epithelial cell line from embryonic kidney transformed with large T antigen) cell lysate transfected with pCMV6-ENTRY control cDNA

Lane 2 : HEK-293T cell lysate transfected with pCMV6-ENTRY LECT2 cDNA

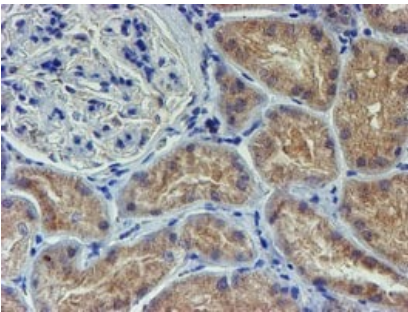
Lysates/proteins at 5 µg per lane.

Predicted band size: 16 kDa



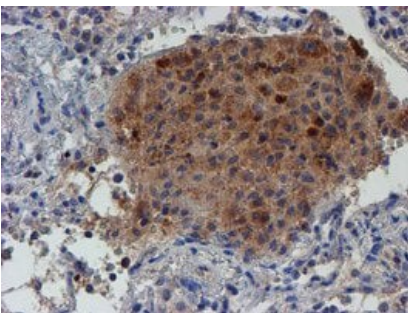
Paraffin-embedded human breast tissue stained for LECT2 using ab119429 at 1/150 dilution in immunohistochemical analysis.

Immunohistochemistry (Formalin/PFA-fixed paraffin-embedded sections) - Anti-LECT2 antibody [OT12A11] (ab119429)



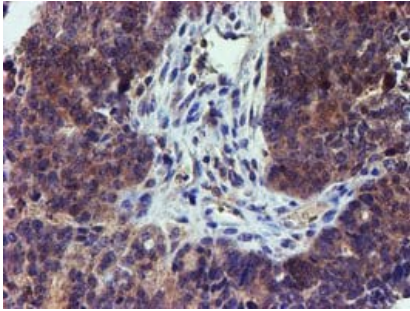
Paraffin-embedded human kidney tissue stained for LECT2 using ab119429 at 1/150 dilution in immunohistochemical analysis.

Immunohistochemistry (Formalin/PFA-fixed paraffin-embedded sections) - Anti-LECT2 antibody [OT12A11] (ab119429)



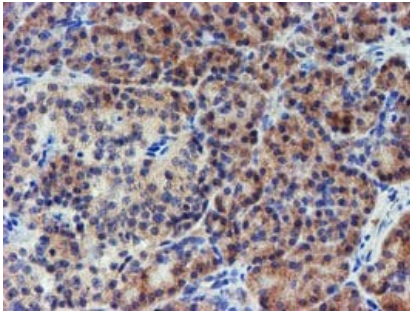
Paraffin-embedded human lung carcinoma tissue stained for LECT2 using ab119429 at 1/150 dilution in immunohistochemical analysis.

Immunohistochemistry (Formalin/PFA-fixed paraffin-embedded sections) - Anti-LECT2 antibody [OT12A11] (ab119429)



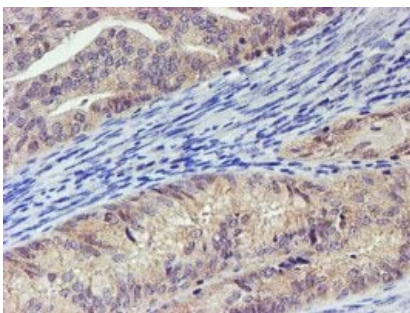
Immunohistochemistry (Formalin/PFA-fixed paraffin-embedded sections) - Anti-LECT2 antibody [OTI2A11] (ab119429)

Paraffin-embedded human ovary adenocarcinoma tissue stained for LECT2 using ab119429 at 1/150 dilution in immunohistochemical analysis.



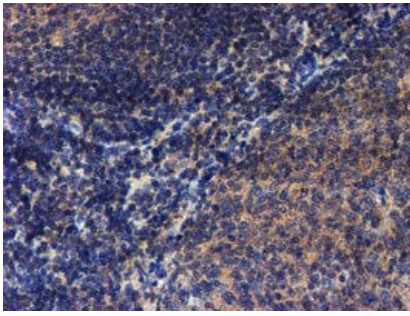
Immunohistochemistry (Formalin/PFA-fixed paraffin-embedded sections) - Anti-LECT2 antibody [OTI2A11] (ab119429)

Paraffin-embedded human pancreas tissue stained for LECT2 using ab119429 at 1/150 dilution in immunohistochemical analysis.



Immunohistochemistry (Formalin/PFA-fixed paraffin-embedded sections) - Anti-LECT2 antibody [OTI2A11] (ab119429)

Paraffin-embedded human endometrium adenocarcinoma tissue stained for LECT2 using ab119429 at 1/150 dilution in immunohistochemical analysis.



Paraffin-embedded human tonsil tissue stained for LECT2 using ab119429 at 1/150 dilution in immunohistochemical analysis.

Immunohistochemistry (Formalin/PFA-fixed paraffin-embedded sections) - Anti-LECT2 antibody [OT12A11] (ab119429)

Please note: All products are "FOR RESEARCH USE ONLY. NOT FOR USE IN DIAGNOSTIC PROCEDURES"

Our Abpromise to you: Quality guaranteed and expert technical support

- Replacement or refund for products not performing as stated on the datasheet
- Valid for 12 months from date of delivery
- Response to your inquiry within 24 hours
- We provide support in Chinese, English, French, German, Japanese and Spanish
- Extensive multi-media technical resources to help you
- We investigate all quality concerns to ensure our products perform to the highest standards

If the product does not perform as described on this datasheet, we will offer a refund or replacement. For full details of the Abpromise, please visit <https://www.abcam.com/abpromise> or contact our technical team.

Terms and conditions

- Guarantee only valid for products bought direct from Abcam or one of our authorized distributors