


Product datasheet

Anti-LEFTY2 antibody [7C5G1H6H10] ab34593

1 Image

Overview

Product name	Anti-LEFTY2 antibody [7C5G1H6H10]
Description	Mouse monoclonal [7C5G1H6H10] to LEFTY2
Host species	Mouse
Specificity	This antibody reacts with a 30 kDa protein corresponding to human Lefty. No reactivity occurs against 6X HIS tag.
Tested applications	Suitable for: WB
Species reactivity	Reacts with: Human Predicted to work with: Mouse, Rat 
Immunogen	Fusion protein corresponding to Human Lefty. Recombinant 6X HIS tagged human Lefty.
General notes	<p>Hybridoma: Produced by the fusion between BALB/c mouse splenocytes and mouse Sp2/0 myeloma cells.</p> <p>The Life Science industry has been in the grips of a reproducibility crisis for a number of years. Abcam is leading the way in addressing this with our range of recombinant monoclonal antibodies and knockout edited cell lines for gold-standard validation. Please check that this product meets your needs before purchasing.</p> <p>If you have any questions, special requirements or concerns, please send us an inquiry and/or contact our Support team ahead of purchase. Recommended alternatives for this product can be found below, along with publications, customer reviews and Q&As</p>

Properties

Form	Liquid
Storage instructions	Shipped at 4°C. Store at +4°C short term (1-2 weeks). Upon delivery aliquot. Store at -20°C or -80°C. Avoid freeze / thaw cycle.
Storage buffer	Preservative: 0.01% Sodium azide Constituents: 0.42% Potassium phosphate, 0.87% Sodium chloride
Purity	Protein A purified
Clonality	Monoclonal
Clone number	7C5G1H6H10
Myeloma	Sp2/0

Isotype IgG2a
Light chain type kappa

Applications

The Abpromise guarantee Our **Abpromise guarantee** covers the use of ab34593 in the following tested applications. The application notes include recommended starting dilutions; optimal dilutions/concentrations should be determined by the end user.

Application	Abreviews	Notes
WB		1/2000. Detects a band of approximately 30 kDa (predicted molecular weight: 41 kDa).

Target

Function Required for left-right (L-R) asymmetry determination of organ systems in mammals. May play a role in endometrial bleeding.

Tissue specificity Mesenchymal cells of the endometrial stroma.

Involvement in disease Defects in LEFTY2 are the cause of left-right axis malformations (LRAM) [MIM:601877]. The defect includes left pulmonary isomerism, with cardiac anomalies characterized by complete atrioventricular canal defect and hypoplastic left ventricle, and interrupted inferior vena cava.

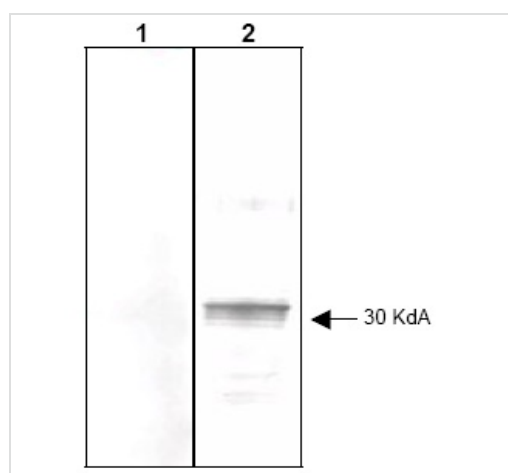
Sequence similarities Belongs to the TGF-beta family.

Developmental stage Transiently expressed before and during menstrual bleeding.

Post-translational modifications The processing of the protein may also occur at the second R-X-X-R site located at AA 132-135. Processing appears to be regulated in a cell-type specific manner.

Cellular localization Secreted.

Images



Western blot - Anti-LEFTY2 antibody [7C5G1H6H10] (ab34593)

All lanes : Anti-LEFTY2 antibody [7C5G1H6H10] (ab34593) at 1/2000 dilution

Lane 1 : 1µg 6X His tagged unrelated protein (shows that the antibody does not recognize the epitope tag).

Lane 2 : 1µg partially purified recombinant 6X his tagged human Lefty

Secondary

All lanes : IRDye™800 Goat anti-mouse IgG at 1/1000 dilution

Predicted band size: 41 kDa

Observed band size: 30 kDa

Please note: All products are "FOR RESEARCH USE ONLY. NOT FOR USE IN DIAGNOSTIC PROCEDURES"

Our Abpromise to you: Quality guaranteed and expert technical support

- Replacement or refund for products not performing as stated on the datasheet
- Valid for 12 months from date of delivery
- Response to your inquiry within 24 hours

- We provide support in Chinese, English, French, German, Japanese and Spanish
- Extensive multi-media technical resources to help you
- We investigate all quality concerns to ensure our products perform to the highest standards

If the product does not perform as described on this datasheet, we will offer a refund or replacement. For full details of the Abpromise, please visit <https://www.abcam.com/abpromise> or contact our technical team.

Terms and conditions

- Guarantee only valid for products bought direct from Abcam or one of our authorized distributors