




Product datasheet

Anti-Lgi1/EPT antibody [N283/7] ab186296

2 Images

Overview

Product name	Anti-Lgi1/EPT antibody [N283/7]
Description	Mouse monoclonal [N283/7] to Lgi1/EPT
Host species	Mouse
Tested applications	Suitable for: ICC/IF, WB
Species reactivity	Reacts with: Rat, Human Predicted to work with: Chimpanzee, Orangutan 
Immunogen	Recombinant fragment corresponding to Mouse Lgi1/EPT aa 1-150. NCBI Accession No. NP_064674.1. Fragment corresponding to LRRNT domain and first LRR repeat. Database link: Q9JIA1  Run BLAST with  Run BLAST with
Positive control	WB: Rat brain lysate. ICC/IF: SK-N-BE cells.
General notes	<p>The clone number has been updated from S283-7 to N283/7, both clone numbers name the same antibody clone.</p> <p>The Life Science industry has been in the grips of a reproducibility crisis for a number of years. Abcam is leading the way in addressing this with our range of recombinant monoclonal antibodies and knockout edited cell lines for gold-standard validation. Please check that this product meets your needs before purchasing.</p> <p>If you have any questions, special requirements or concerns, please send us an inquiry and/or contact our Support team ahead of purchase. Recommended alternatives for this product can be found below, along with publications, customer reviews and Q&As</p>

Properties

Form	Liquid
Storage instructions	Shipped at 4°C. Store at +4°C short term (1-2 weeks). Upon delivery aliquot. Store at -20°C long term. Avoid freeze / thaw cycle.
Storage buffer	Preservative: 0.1% Sodium azide Constituents: 50% Glycerol (glycerin, glycerine), PBS
Purity	Protein G purified
Clonality	Monoclonal
Clone number	N283/7

Isotype

IgG2a

Applications

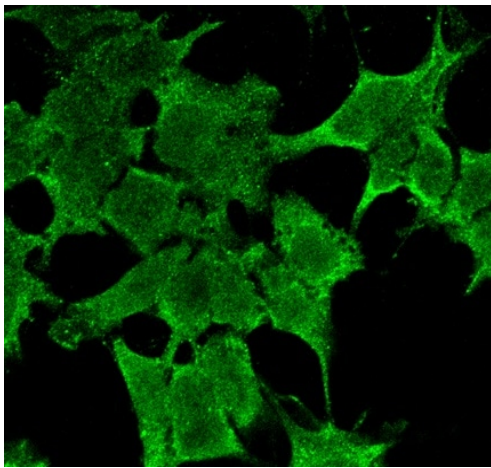
The Abpromise guarantee Our **Abpromise guarantee** covers the use of ab186296 in the following tested applications. The application notes include recommended starting dilutions; optimal dilutions/concentrations should be determined by the end user.

Application	Abreviews	Notes
ICC/IF		Use at an assay dependent concentration.
WB		1/1000. Detects a band of approximately 60 kDa (predicted molecular weight: 64 kDa).

Target

Function	Regulates voltage-gated potassium channels assembled from KCNA1, KCNA4 and KCNAB1. It slows down channel inactivation by precluding channel closure mediated by the KCNAB1 subunit. Ligand for ADAM22 that positively regulates synaptic transmission mediated by AMPA-type glutamate receptors (By similarity). Plays a role in suppressing the production of MMP1/3 through the phosphatidylinositol 3-kinase/ERK pathway. May play a role in the control of neuroblastoma cell survival.
Tissue specificity	Predominantly expressed in neural tissues, especially in brain. Expression is reduced in low-grade brain tumors and significantly reduced or absent in malignant gliomas. Isoform 1 is absent in the cerebellum and is detectable in the occipital cortex and hippocampus; higher amounts are observed in the parietal and frontal cortices, putamen, and, particularly, in the temporal neocortex, where it is 3.5 times more abundant than in the hippocampus (at protein level). Isoform 3 shows the highest expression in the occipital cortex and the lowest in the hippocampus (at protein level).
Involvement in disease	Defects in LGI1 are the cause of lateral temporal lobe epilepsy autosomal dominant (ADLTE) [MIM:600512]; also known as autosomal dominant partial epilepsy with auditory features (ADPEAF). ADLTE is a form of epilepsy characterized by partial seizures, usually preceded by auditory signs.
Sequence similarities	Contains 7 EAR repeats. Contains 3 LRR (leucine-rich) repeats. Contains 1 LRRCT domain. Contains 1 LRRNT domain.
Post-translational modifications	Glycosylated.
Cellular localization	Secreted. Cell junction > synapse. Isoform 1 but not isoform 2 is secreted. Isoform 1 is enriched in the Golgi apparatus while isoform 2 accumulates in the endoplasmic reticulum.

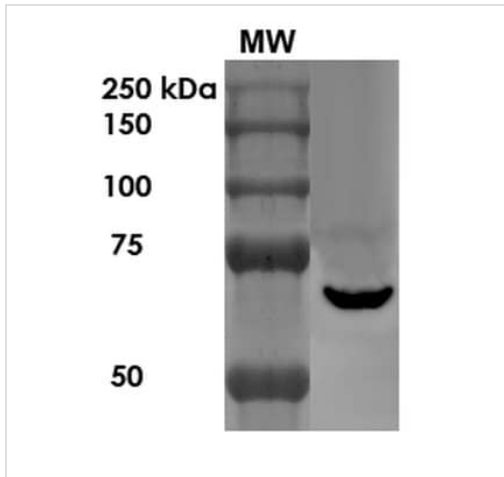
Images



Immunocytochemistry/ Immunofluorescence - Anti-Lgi1/EPT antibody [N283/7] (ab186296)

SK-N-BE (Human neuroblastoma cell line) cells stained for Lgi1/EPT (Green) using ab186296 at a 1/100 dilution (1 hour at RT) in ICC/IF. Secondary Antibody: Goat Anti-Mouse ATTO 488 at 1:100 for 1 hour at RT.

Cells were fixed with 4% formaldehyde for 15 minutes at RT.



Western blot - Anti-Lgi1/EPT antibody [N283/7] (ab186296)

Anti-Lgi1/EPT antibody [N283/7] (ab186296) at 1/1000 dilution (for 1 hour at RT) + Rat brain lysate, for 1 hour at RT at 10 µg

Secondary

Goat Anti-Mouse HRP at 1/200 dilution

Predicted band size: 64 kDa

Please note: All products are "FOR RESEARCH USE ONLY. NOT FOR USE IN DIAGNOSTIC PROCEDURES"

Our Abpromise to you: Quality guaranteed and expert technical support

- Replacement or refund for products not performing as stated on the datasheet
- Valid for 12 months from date of delivery
- Response to your inquiry within 24 hours
- We provide support in Chinese, English, French, German, Japanese and Spanish
- Extensive multi-media technical resources to help you
- We investigate all quality concerns to ensure our products perform to the highest standards

If the product does not perform as described on this datasheet, we will offer a refund or replacement. For full details of the Abpromise,

please visit <https://www.abcam.com/abpromise> or contact our technical team.

Terms and conditions

- Guarantee only valid for products bought direct from Abcam or one of our authorized distributors