

## Product datasheet

# Anti-LIF antibody ab113262

★★★★★ [1 Abreviews](#) [18 References](#) [4 Images](#)

### Overview

---

<b>Product name</b>	Anti-LIF antibody
<b>Description</b>	Rabbit polyclonal to LIF
<b>Host species</b>	Rabbit
<b>Tested applications</b>	<b>Suitable for:</b> WB, ICC/IF
<b>Species reactivity</b>	<b>Reacts with:</b> Mouse, Rat
<b>Immunogen</b>	A 16 amino acid synthetic peptide corresponding to internal sequence amino acids of Human LIF (NP_002300).
<b>Positive control</b>	WB: NIH/3T3 and EL4 cell lysates. Mouse colon and rat lung tissue lysates; ICC/IF: NIH/3T3 cells.
<b>General notes</b>	<p>The Life Science industry has been in the grips of a reproducibility crisis for a number of years. Abcam is leading the way in addressing this with our range of recombinant monoclonal antibodies and knockout edited cell lines for gold-standard validation. Please check that this product meets your needs before purchasing.</p> <p>If you have any questions, special requirements or concerns, please send us an inquiry and/or contact our Support team ahead of purchase. Recommended alternatives for this product can be found below, along with publications, customer reviews and Q&amp;As</p>

### Properties

---

<b>Form</b>	Liquid
<b>Storage instructions</b>	Shipped at 4°C. Store at +4°C short term (1-2 weeks). Store at -20°C. Avoid freeze / thaw cycle.
<b>Storage buffer</b>	pH: 7.2 Preservative: 0.02% Sodium azide Constituent: 99% PBS
<b>Purity</b>	Immunogen affinity purified
<b>Purification notes</b>	ab113262 is purified by affinity chromatography via a peptide column.
<b>Clonality</b>	Polyclonal
<b>Isotype</b>	IgG

### Applications

---

## The Abpromise guarantee

Our **Abpromise guarantee** covers the use of ab113262 in the following tested applications.

The application notes include recommended starting dilutions; optimal dilutions/concentrations should be determined by the end user.

Application	Abreviews	Notes
WB		Use a concentration of 1 - 2 µg/ml. Detects a band of approximately 26 kDa (predicted molecular weight: 22 kDa).
ICC/IF		Use a concentration of 20 µg/ml.

## Target

### Function

LIF has the capacity to induce terminal differentiation in leukemic cells. Its activities include the induction of hematopoietic differentiation in normal and myeloid leukemia cells, the induction of neuronal cell differentiation, and the stimulation of acute-phase protein synthesis in hepatocytes.

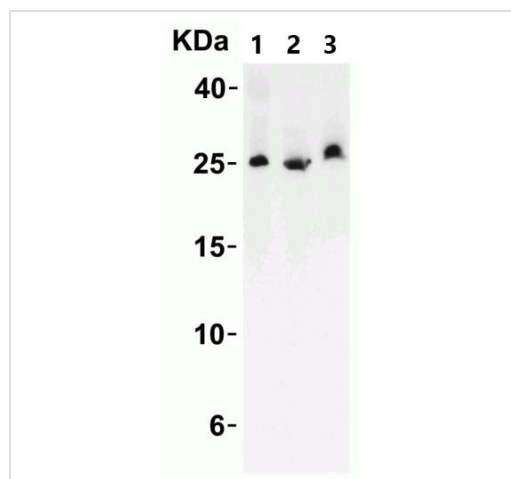
### Sequence similarities

Belongs to the LIF/OSM family.

### Cellular localization

Secreted.

## Images



Western blot - Anti-LIF antibody (ab113262)

**All lanes :** Anti-LIF antibody (ab113262) at 1 µg/ml

**Lane 1 :** NIH/3T3 (mouse embryo fibroblast cell line) cell lysate

**Lane 2 :** Mouse colon tissue lysate

**Lane 3 :** EL4 (mouse lymphoma cell line) cell lysate

Lysates/proteins at 15 µg per lane.

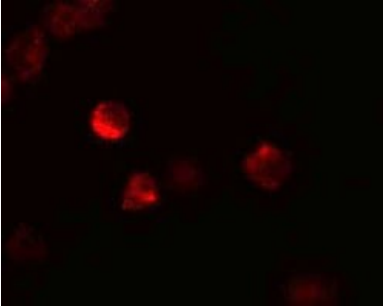
### Secondary

**All lanes :** Goat anti-rabbit IgG (HRP) at 1/10000 dilution

**Predicted band size:** 22 kDa

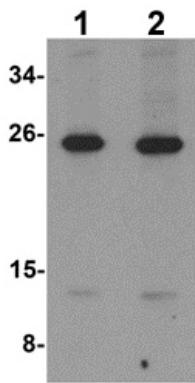
**Observed band size:** 26 kDa

**Diluting buffer:** 5% NFD/MBST.



Immunocytochemistry/ Immunofluorescence - Anti-LIF antibody (ab113262)

Immunofluorescence analysis of 3T3 cells, staining LIF with ab113262 at 20 µg/ml.



Western blot - Anti-LIF antibody (ab113262)

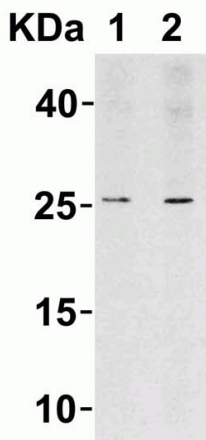
**Lane 1 :** Anti-LIF antibody (ab113262) at 1 µg/ml

**Lane 2 :** Anti-LIF antibody (ab113262) at 2 µg/ml

**All lanes :** 3T3 cell lysate

Lysates/proteins at 15 µg per lane.

**Predicted band size:** 22 kDa



Western blot - Anti-LIF antibody (ab113262)

**Lane 1 :** Anti-LIF antibody (ab113262) at 1 µg/ml

**Lane 2 :** Anti-LIF antibody (ab113262) at 2 µg/ml

**All lanes :** Rat lung tissue lysate

Lysates/proteins at 15 µg per lane.

**Secondary**

**All lanes :** Goat anti-rabbit IgG (HRP) at 1/10000 dilution

**Predicted band size:** 22 kDa

**Observed band size:** 26 kDa

**Diluting buffer:** 5% NFDN/TBST.

**Please note:** All products are "FOR RESEARCH USE ONLY. NOT FOR USE IN DIAGNOSTIC PROCEDURES"

### **Our Abpromise to you: Quality guaranteed and expert technical support**

---

- Replacement or refund for products not performing as stated on the datasheet
- Valid for 12 months from date of delivery
- Response to your inquiry within 24 hours
  
- We provide support in Chinese, English, French, German, Japanese and Spanish
- Extensive multi-media technical resources to help you
- We investigate all quality concerns to ensure our products perform to the highest standards

If the product does not perform as described on this datasheet, we will offer a refund or replacement. For full details of the Abpromise, please visit <https://www.abcam.com/abpromise> or contact our technical team.

### **Terms and conditions**

---

- Guarantee only valid for products bought direct from Abcam or one of our authorized distributors