

## Product datasheet

# Anti-LILRA3 antibody ab111562

[1 References](#) [2 Images](#)

### Overview

---

<b>Product name</b>	Anti-LILRA3 antibody
<b>Description</b>	Rabbit polyclonal to LILRA3
<b>Host species</b>	Rabbit
<b>Tested applications</b>	<b>Suitable for:</b> WB, IHC-P
<b>Species reactivity</b>	<b>Reacts with:</b> Human
<b>Immunogen</b>	Recombinant fragment, corresponding to a region within amino acids 110-311 of Human LILRA3.
<b>Positive control</b>	WB: 293T whole cell extract; IHC: Human colon carcinoma.
<b>General notes</b>	<p>The Life Science industry has been in the grips of a reproducibility crisis for a number of years. Abcam is leading the way in addressing this with our range of recombinant monoclonal antibodies and knockout edited cell lines for gold-standard validation. Please check that this product meets your needs before purchasing.</p> <p>If you have any questions, special requirements or concerns, please send us an inquiry and/or contact our Support team ahead of purchase. Recommended alternatives for this product can be found below, along with publications, customer reviews and Q&amp;As</p>

### Properties

---

<b>Form</b>	Liquid
<b>Storage instructions</b>	Shipped at 4°C. Upon delivery aliquot and store at -20°C or -80°C. Avoid repeated freeze / thaw cycles.
<b>Storage buffer</b>	pH: 7.00 Preservative: 0.01% Thimerosal (merthiolate) Constituents: 78.99% PBS, 1% BSA, 20% Glycerol (glycerin, glycerine)
<b>Purity</b>	Immunogen affinity purified
<b>Clonality</b>	Polyclonal
<b>Isotype</b>	IgG

### Applications

---

**The Abpromise guarantee** Our **Abpromise guarantee** covers the use of ab111562 in the following tested applications.

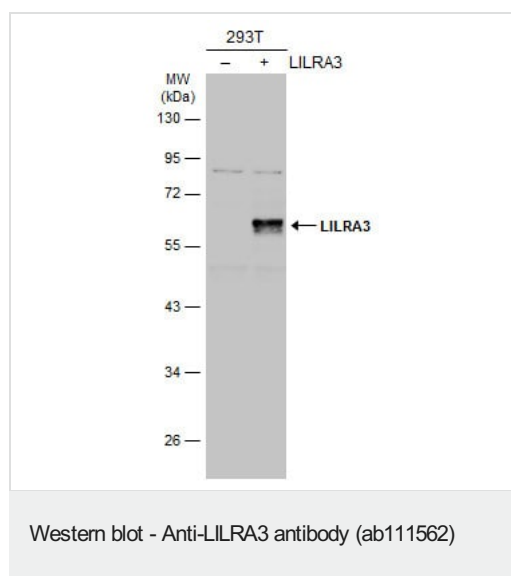
The application notes include recommended starting dilutions; optimal dilutions/concentrations should be determined by the end user.

Application	Abreviews	Notes
WB		1/500 - 1/3000. Predicted molecular weight: 47 kDa.
IHC-P		1/250.

## Target

<b>Function</b>	May act as soluble receptor for class I MHC antigens.
<b>Tissue specificity</b>	Detected in B-cells, and at lower levels in natural killer (NK) cells. Detected in peripheral blood monocytes and lung.
<b>Sequence similarities</b>	Contains 4 Ig-like C2-type (immunoglobulin-like) domains.
<b>Cellular localization</b>	Secreted.

## Images



**All lanes :** Anti-LILRA3 antibody (ab111562) at 1/2000 dilution

**Lane 1 :** Non-transfected (-) 293T whole cell extracts

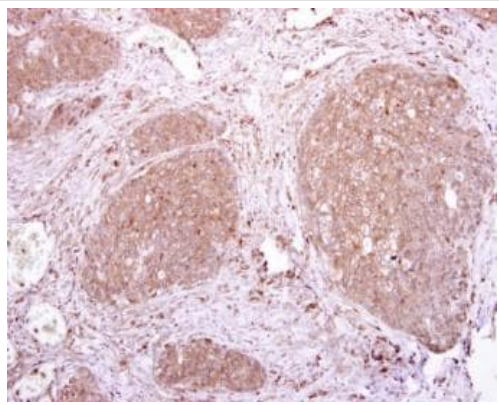
**Lane 2 :** Transfected (+) 293T whole cell extracts

Lysates/proteins at 30 µg per lane.

### Secondary

**All lanes :** HRP-conjugated anti-rabbit IgG antibody

**Predicted band size:** 47 kDa



Immunohistochemistry (Formalin/PFA-fixed paraffin-embedded sections) - Anti-LILRA3 antibody (ab111562)

Immunohistochemistry (Formalin/PFA-fixed paraffin-embedded sections) analysis of human colon carcinoma tissue labelling LILRA3 with ab111562 at 1/250 dilution. Antigen retrieval was performed using Trilogy™ (EDTA based, pH 8.0) buffer, for 15min. Detects LILRA protein at cytoplasm.

**Please note:** All products are "FOR RESEARCH USE ONLY. NOT FOR USE IN DIAGNOSTIC PROCEDURES"

### Our Abpromise to you: Quality guaranteed and expert technical support

---

- Replacement or refund for products not performing as stated on the datasheet
- Valid for 12 months from date of delivery
- Response to your inquiry within 24 hours
- We provide support in Chinese, English, French, German, Japanese and Spanish
- Extensive multi-media technical resources to help you
- We investigate all quality concerns to ensure our products perform to the highest standards

If the product does not perform as described on this datasheet, we will offer a refund or replacement. For full details of the Abpromise, please visit <https://www.abcam.com/abpromise> or contact our technical team.

### Terms and conditions

---

- Guarantee only valid for products bought direct from Abcam or one of our authorized distributors