

Product datasheet

Anti-Lin28A antibody ab175352

11 Images

Overview

Product name	Anti-Lin28A antibody
Description	Rabbit polyclonal to Lin28A
Host species	Rabbit
Tested applications	Suitable for: Flow Cyt, IHC-P, WB, ICC/IF, IP
Species reactivity	Reacts with: Mouse, Human
Immunogen	Recombinant full length protein corresponding to Human Lin28A aa 1 to the C-terminus. Expressed in bacteria. Database link: Q9H9Z2
Positive control	WB: NTERA-2, NCCIT and HeLa whole cell lysates. ICC: H9 embryonic stem cells, HeLa cells, HEL 11.4 induced IPS cells, Human embryonal carcinoma NTERA-2 cells. IHC-P: Mouse heart tissue. Human tonsil and Human placenta tissues. Flow cyt: H9 embryonic stem cells, HEL 11.4 induced IPS cells. IP: NCCIT whole cell lysate.
General notes	<p>The Life Science industry has been in the grips of a reproducibility crisis for a number of years. Abcam is leading the way in addressing this with our range of recombinant monoclonal antibodies and knockout edited cell lines for gold-standard validation. Please check that this product meets your needs before purchasing.</p> <p>If you have any questions, special requirements or concerns, please send us an inquiry and/or contact our Support team ahead of purchase. Recommended alternatives for this product can be found below, along with publications, customer reviews and Q&As</p>

Properties

Form	Liquid
Storage instructions	Shipped at 4°C. Store at +4°C short term (1-2 weeks). Upon delivery aliquot. Store at -20°C long term. Avoid freeze / thaw cycle.
Storage buffer	Preservative: 0.05% Sodium azide Constituents: 0.1% BSA, 30% Glycerol (glycerin, glycerine), 69% PBS
Purity	Protein A purified
Clonality	Polyclonal
Isotype	IgG

Applications

The Abpromise guarantee

Our **Abpromise guarantee** covers the use of ab175352 in the following tested applications.

The application notes include recommended starting dilutions; optimal dilutions/concentrations should be determined by the end user.

Application	Abreviews	Notes
Flow Cyt		1/100. ab171870 - Rabbit polyclonal IgG, is suitable for use as an isotype control with this antibody.
IHC-P		1/20 - 1/50.
WB		1/1000. Predicted molecular weight: 22 kDa.
ICC/IF		1/100 - 1/200.
IP		1/1000.

Target

Function

Acts as a 'translational enhancer', driving specific mRNAs to polysomes and thus increasing the efficiency of protein synthesis. Its association with the translational machinery and target mRNAs results in an increased number of initiation events per molecule of mRNA and, indirectly, in stabilizing the mRNAs. Binds IGF2 mRNA, MYOD1 mRNA, ARBP/36B4 ribosomal protein mRNA and its own mRNA. Essential for skeletal muscle differentiation program through the translational up-regulation of IGF2 expression (By similarity). Acts as a suppressor of microRNA (miRNA) biogenesis by specifically binding the precursor let-7 (pre-let-7), a miRNA precursor. Acts by binding pre-let-7 and recruiting ZCCHC11/TUT4 uridylyltransferase, leading to the terminal uridylation of pre-let-7. Uridylated pre-let-7 miRNAs fail to be processed by Dicer and undergo degradation. Degradation of pre-let-7 in embryonic stem (ES) cells contributes to the maintenance of ES cells. In contrast, LIN28A down-regulation in neural stem cells by miR-125, allows the processing of pre-let-7. Specifically recognizes the 5'-GGAG-3' motif in the terminal loop of pre-let-7. Also recognizes and binds non pre-let-7 pre-miRNAs that contain the 5'-GGAG-3' motif in the terminal loop, leading to their terminal uridylation and subsequent degradation.

Tissue specificity

Expressed in embryonic stem cells (ES cells), placenta and testis.

Sequence similarities

Belongs to the lin-28 family.
Contains 2 CCHC-type zinc fingers.
Contains 1 CSD (cold-shock) domain.

Developmental stage

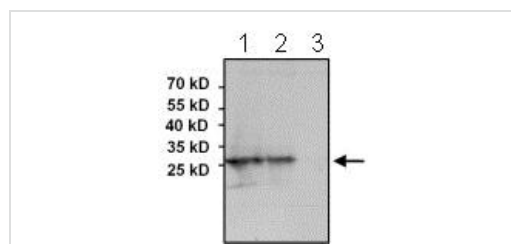
Expressed in fetal liver. Expression decreases during differentiation of ES cells or upon induction of neuronal differentiation by retinoic acid.

Domain

The CSD domain is required for function in muscle differentiation.

Cellular localization

Cytoplasm. Nucleus > nucleolus. Nucleolar localization observed in 10-15% of the nuclei in differentiated myotubes (By similarity). Shuttles between the cytoplasm and the nucleus. Localizes to cytoplasmic processing bodies and stress granules.



Western blot - Anti-Lin28A antibody (ab175352)

All lanes : Anti-Lin28A antibody (ab175352) at 1/1000 dilution

Lane 1 : NCCIT whole cell lysate

Lane 2 : NTERA-2 whole cell lysate

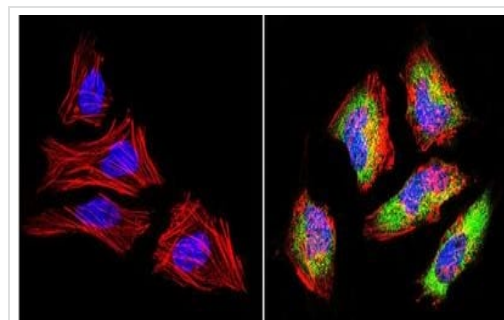
Lane 3 : HeLa whole cell lysate

Lysates/proteins at 75 µg per lane.

Secondary

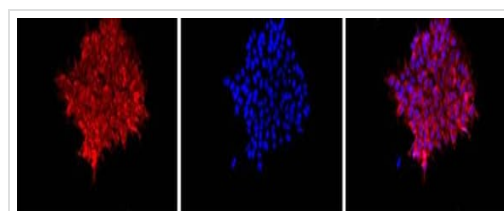
All lanes : goat anti-rabbit-HRP secondary antibody at 1/20000 dilution

Predicted band size: 22 kDa



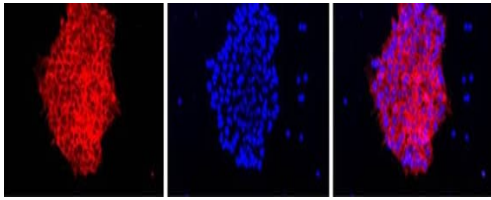
Immunocytochemistry/ Immunofluorescence - Anti-Lin28A antibody (ab175352)

Immunofluorescent analysis of formalin-fixed and permeabilized HeLa cells labeling Lin28A with ab175352 at 1/100 and incubated with a DyLight-conjugated secondary antibody. F-actin (red) was stained with a fluorescent phalloidin and nuclei (blue) were stained with DAPI.



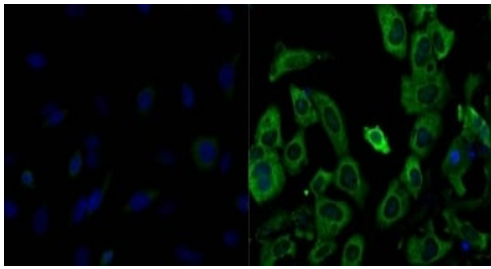
Immunocytochemistry/ Immunofluorescence - Anti-Lin28A antibody (ab175352)

Immunofluorescent analysis of fH9 embryonic stem cells labeling Lin28A with ab175352 at 1/200 and incubated with a fluorescently-conjugated secondary antibody. Nuclei (blue) were stained with DAPI.



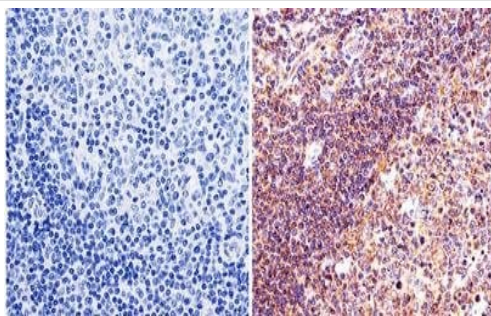
Immunocytochemistry/ Immunofluorescence - Anti-Lin28A antibody (ab175352)

Immunofluorescent analysis of HEL 11.4 induced IPS cells labeling Lin28A with ab175352 at 1/200 and incubated with a fluorescently-conjugated secondary antibody. Nuclei (blue) were stained with DAPI.



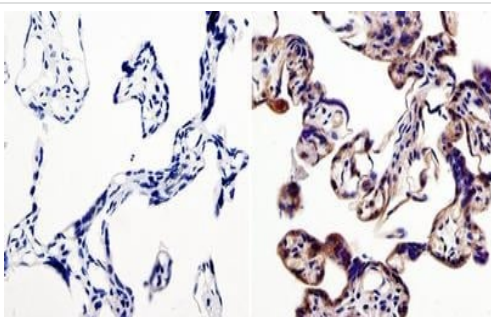
Immunocytochemistry/ Immunofluorescence - Anti-Lin28A antibody (ab175352)

Immunofluorescent analysis of formalin-fixed and permeabilized HeLa cells (left image) and Human embryonal carcinoma NTERA-2 cells (right image) labeling Lin28A with ab175352 at 1/200 and and incubated with DyLight 488 goat-anti-rabbit IgG secondary antibody. Nuclei (blue) were stained with Hoechst 33342 dye.



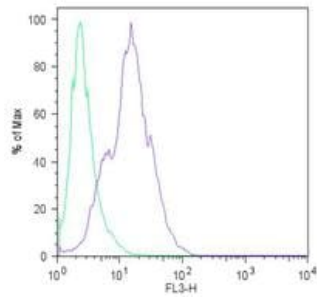
Immunohistochemistry (Formalin/PFA-fixed paraffin-embedded sections) - Anti-Lin28A antibody (ab175352)

Immunohistochemical analysis of paraffin embedded Human tonsil tissue labeling Lin28A with ab175352 at 1/50.



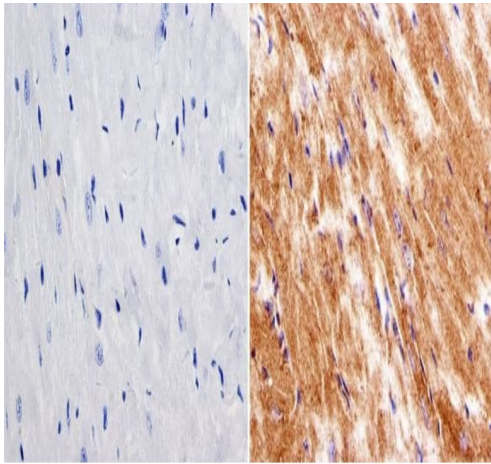
Immunohistochemistry (Formalin/PFA-fixed paraffin-embedded sections) - Anti-Lin28A antibody (ab175352)

Immunohistochemical analysis of paraffin embedded Human placenta tissue labeling Lin28A with ab175352 at 1/50.



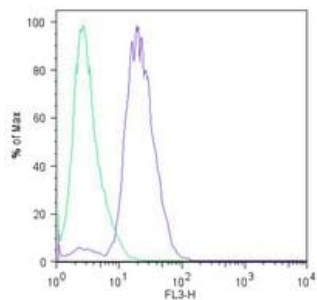
Flow Cytometry - Anti-Lin28A antibody (ab175352)

Flow Cytometrical analysis of H9 embryonic stem cells labeling Lin28A with ab175352 at 1/100 (right histogram) compared to rabbit IgG1 (left histogram) and incubated with a fluorescently-conjugated secondary antibody.



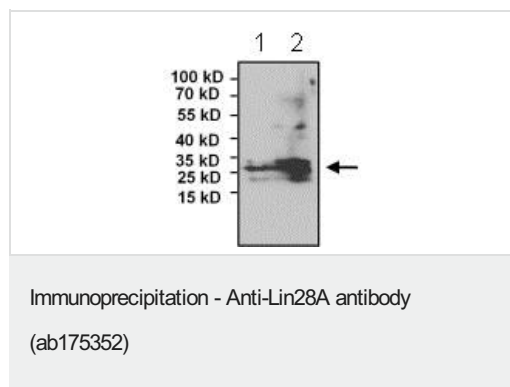
Immunohistochemistry (Formalin/PFA-fixed paraffin-embedded sections) - Anti-Lin28A antibody (ab175352)

Paraffin embedded mouse heart tissue stained for Lin28A using ab175352 at 1/20 dilution in immunohistochemical analysis. DAB staining buffer was applied and tissues were counterstained with hematoxylin.



Flow Cytometry - Anti-Lin28A antibody (ab175352)

Flow Cytometrical analysis of HEL 11.4 induced IPS cells labeling Lin28A with ab175352 at 1/100 (right histogram) compared to rabbit IgG1 (left histogram) and incubated with a fluorescently-conjugated secondary antibody.



Lane 2: Immunoprecipitation. ab175352 at 1/1000 labeling Lin28A immunoprecipitated from 750 µg of NCCIT whole cell lysate using ab175352 at 3µg.

Anti-Lin28A antibody (ab175352) at 1/1000 dilution + NCCIT whole cell lysate

Please note: All products are "FOR RESEARCH USE ONLY. NOT FOR USE IN DIAGNOSTIC PROCEDURES"

Our Abpromise to you: Quality guaranteed and expert technical support

- Replacement or refund for products not performing as stated on the datasheet
- Valid for 12 months from date of delivery
- Response to your inquiry within 24 hours
- We provide support in Chinese, English, French, German, Japanese and Spanish
- Extensive multi-media technical resources to help you
- We investigate all quality concerns to ensure our products perform to the highest standards

If the product does not perform as described on this datasheet, we will offer a refund or replacement. For full details of the Abpromise, please visit <https://www.abcam.com/abpromise> or contact our technical team.

Terms and conditions

- Guarantee only valid for products bought direct from Abcam or one of our authorized distributors