


Product datasheet

Anti-LINE-1 ORF2p antibody ab106004

★★★★★ [1 Abreviews](#) [4 References](#) [1 Image](#)

Overview

Product name	Anti-LINE-1 ORF2p antibody
Description	Chicken polyclonal to LINE-1 ORF2p
Host species	Chicken
Specificity	The two synthetic immunogen peptides correspond to regions within the endonuclease domain of LINE-1 ORF2p protein. This antibody is intended for use in studying control of L1 retrotransposons.
Tested applications	Suitable for: ELISA, WB
Species reactivity	Reacts with: Human Predicted to work with: Chimpanzee 
Immunogen	Synthetic peptide corresponding to Human LINE-1 ORF2p conjugated to keyhole limpet haemocyanin. Two synthetic peptides conjugated to keyhole limpet hemocyanin (KLH). The peptides correspond to regions within the endonuclease domain of LINE-1 ORF2p protein. Database link: O00370
Positive control	induced bacterially expressed human ORF2
General notes	Dilute only prior to immediate use. Expiration date is one (1) year from date of opening product. ab106004 is intended for use in studying control of L1 retrotransposons. The Life Science industry has been in the grips of a reproducibility crisis for a number of years. Abcam is leading the way in addressing this with our range of recombinant monoclonal antibodies and knockout edited cell lines for gold-standard validation. Please check that this product meets your needs before purchasing. If you have any questions, special requirements or concerns, please send us an inquiry and/or contact our Support team ahead of purchase. Recommended alternatives for this product can be found below, along with publications, customer reviews and Q&As

Properties

Form	Liquid
Storage instructions	Shipped at 4°C. Upon delivery aliquot and store at -20°C or -80°C. Avoid repeated freeze / thaw cycles.
Storage buffer	Preservative: 0.01% Sodium azide

	Constituents: 0.88% Sodium chloride, 0.42% Potassium phosphate
Purity	IgY fraction
Purification notes	ab106004 is an IgY fraction antibody purified from monospecific Chicken egg yolks by a multi-step process which includes selective precipitation and salt fractionation, followed by extensive dialysis against the buffer.
Clonality	Polyclonal
Isotype	IgY

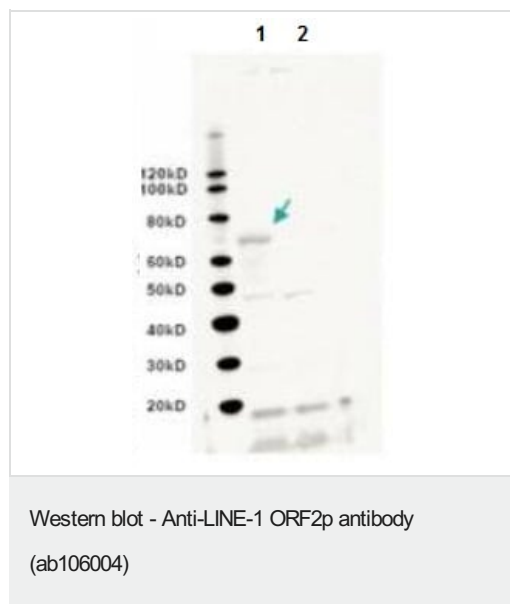
Applications

The Abpromise guarantee Our **Abpromise guarantee** covers the use of ab106004 in the following tested applications. The application notes include recommended starting dilutions; optimal dilutions/concentrations should be determined by the end user.

Application	Abreviews	Notes
ELISA		Use at an assay dependent concentration.
WB		1/2000 - 1/10000. Predicted molecular weight: 149 kDa.

Target

Images



All lanes : Anti-LINE-1 ORF2p antibody (ab106004) at 1/2000 dilution

Lane 1 : induced bacterially expressed human ORF2

Lane 2 : uninduced bacterially expressed human ORF2

Predicted band size: 149 kDa

Note: No specific band staining is seen in the uninduced lane (lane 2). The lower molecular weight bands represent non-specific staining. The band at ~70 kDa (arrowhead) corresponds to a Human LINE-1 ORF2p endonuclease domain fusion protein.

Please note: All products are "FOR RESEARCH USE ONLY. NOT FOR USE IN DIAGNOSTIC PROCEDURES"

Our Abpromise to you: Quality guaranteed and expert technical support

- Replacement or refund for products not performing as stated on the datasheet
- Valid for 12 months from date of delivery
- Response to your inquiry within 24 hours
- We provide support in Chinese, English, French, German, Japanese and Spanish
- Extensive multi-media technical resources to help you
- We investigate all quality concerns to ensure our products perform to the highest standards

If the product does not perform as described on this datasheet, we will offer a refund or replacement. For full details of the Abpromise, please visit <https://www.abcam.com/abpromise> or contact our technical team.

Terms and conditions

- Guarantee only valid for products bought direct from Abcam or one of our authorized distributors